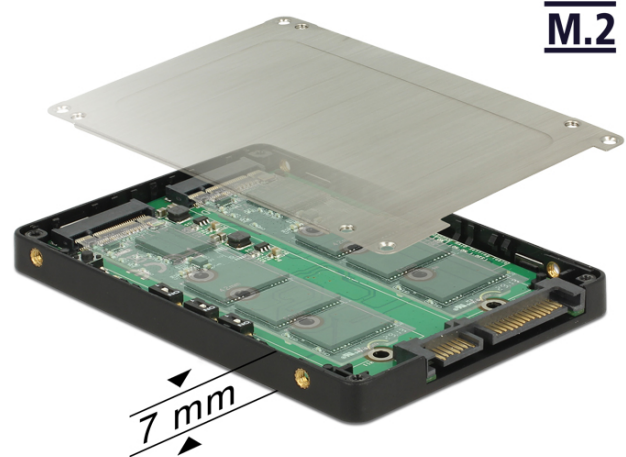


Delock 2.5" Converter SATA 22 pin > 2 x M.2 with RAID with Enclosure

Description

This Delock converter enables the connection of up to two M.2 SSD in 2280, 2260, 2242 or 2230 format which can be used as a 2.5" HDD. The converter can be installed into the system internally through an SATA 22 pin interface. When using more than one SSD, there is the possibility to use different RAID level.



Specification

- Connectors:
 - 1 x SATA 6 Gb/s 22 pin plug >
 - 2 x 67 pin M.2 key B slot
- Interface: SATA
- Chipset: Asmedia ASM1092R
- Form factor: 2.5"
- Supports M.2 modules in format 2280, 2260, 2242 and 2230 with key B or key B+M based on SATA
- Maximum height of the components on the module: 1.25 mm
application of double-sided assembled modules supported
- Data transfer rate up to 6 Gb/s
- Supports RAID 0, 1, JBOD
- RAID mode set by DIP switch on board
- Maximum output current for each M.2 module: max. 3 A
- 1 x Reset button
- 2 x LED indicator
- Bootable
- Operating temperature: 0 °C ~ 70 °C
- Storage temperature: -40 °C ~ 85 °C
- Dimensions (LxWxH): ca. 100 x 70 x 8 mm

System requirements

- Windows 7/7-64/8.1/8.1-64/10/10-64, Linux Kernel 3.16.0
- A free SATA 22 pin interface

Package content

- Converter
- Mounting material
- Screwdriver
- User manual

Item No. 62791

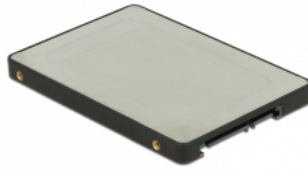
EAN: 4043619627912

Country of origin: Taiwan, Republic of China

Package: Retail Box



Images



General	
Form factor:	2.5"
function:	bootable
Supported operating system:	Linux Kernel 3.16 Windows 7 32-bit Windows 7 64-bit Windows 8.1 32-bit Windows 8.1 64-bit Windows 10 32-bit Windows 10 64-bit
Slot:	SATA
Supported module:	M.2 modules in format 2280, 2260, 2242 and 2230 with key B or key B+M based on SATA
Maximum height of the components on the module:	1.25 mm application of double-sided assembled modules supported
Interface	
connector 1:	1 x SATA 6 Gb/s 22 pin plug
connector 2:	2 x 67 pin M.2 key B slot
Technical characteristics	
Chipset:	Asmedia ASM1092R
Data transfer rate:	6 Gb/s
RAID function:	JBOD 0 1
Physical characteristics	
Length:	100 mm
Width:	70 mm
Height:	8 mm
Colour:	black silver