

HI-SPEED USB 2.0 AUTOMATIC SHARING SWITCH USER MANUAL

MODELS 162005 & 162012



*Shown: Model 162012,
4-Port*


MANHATTAN™

MAN-162005/162012-UM-0109-01

Thank you for purchasing the MANHATTAN® Hi-Speed USB 2.0 Automatic Sharing Switch, Model 162005 (2-port) or Model 162012 (4-port).

Ideal when several users need to share a USB cable modem, printer, digital camera, scanner, external storage drive or other peripherals, this handy device lets you use either its convenient access-on-demand switching for activation with a single click of an onscreen button or onboard switches for manually selecting an active computer.

With built-in automatic sharing capability, the Hi-Speed USB 2.0 Automatic Sharing Switch detects and switches when print commands are executed. Idle-timeout switching helps ensure that data is fully sent from the active printer buffer to the printer before the connection is disengaged to await the next print command.

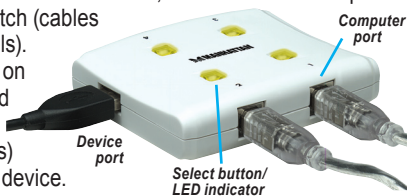
Easy-to-follow instructions in this user manual help make installation of the switch quick and simple, so you'll also soon be enjoying the benefits of these additional features:

- Easy-to-read onboard and on-screen LED indicators monitor status
- Over-current protection and hot-swappable
- Compatible with all USB-equipped computers
- Plug and Play; Windows and Mac compatible — requires no external power supply
- Lifetime Warranty

Hardware Installation/Connections

Before installing the switch, make sure all computers and peripherals to be connected are turned off.

1. With Model 162012 (shown below), connect up to four computers to Ports 1-4 on the switch; with Model 162005, connect the two computers to Ports 1 & 2 on the switch (cables included with both models).
2. Connect the device port on the switch to the selected USB device.
3. Power on the computer(s) and the connected USB device.



Software Installation

The USB Sharing application on the included CD offers a convenient on-screen option (PCs only) for switching the computer source that's directed to the connected peripheral device (instead of manually pressing the Select buttons on the top panel of the switch itself).

1. Insert the included software CD into your CD-ROM drive.

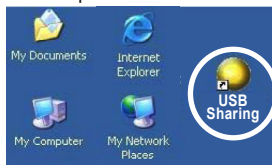
The language dialog box will display. **NOTE:** If installation doesn't begin automatically, open Windows Explorer, navigate to your CD-ROM drive and double-click the setup.exe file.



2. Select a language from the drop-down menu (English is the default) and click "OK."
3. When the InstallShield Wizard welcome screen displays, click "Next."
4. When the Choose Destination Location screen displays, click "Next" to continue with the default directory as C:\Program Files\USB Sharing. If the drive letter designation where you would like the application to be installed is different from "C," browse the drive instead, then click "Next" to confirm the change and continue.



- When the Maintenance Complete screen displays, click “Finish.” Close any open windows, then reboot your computer.
- After the reboot, a USB Sharing shortcut will appear on the desktop, and an indicator icon will appear in the lower-right corner (as shown in the sample images in Operation below).



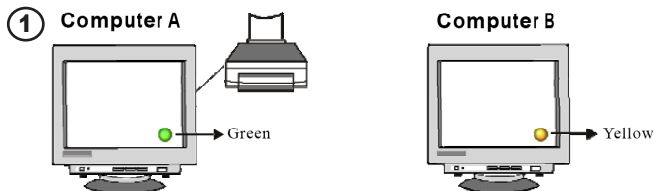
Software Uninstall

To completely remove the software application from your PC, first insert the installation CD into your CD-ROM drive. When the Choose Setup Language screen displays, click “OK.” When the Confirm File Deletion prompt displays, click “OK” to confirm, then click “Finish” to complete the uninstallation procedure.

You can also uninstall the software from “Add or Remove Programs” in the Control Panel. Click “Add or Remove”: The Choose Setup Language screen will display. Click “OK.” When the Confirm File Deletion prompt displays, click “OK” to confirm, then click “Finish.”

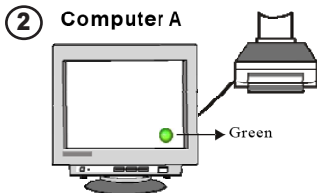
Operation

This switch draws its power from the computer(s). Any connected USB device will link to the first connected computer that’s on; that is, with computers connected to Port 1 and Port 2 of the switch, the computer connected to Port 1 will be “designated” as the active link by the switch until the USB device is redirected to another connected computer.

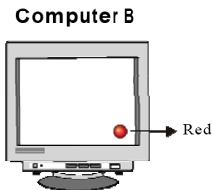


This computer is connected to — and is ready to use — the USB device.

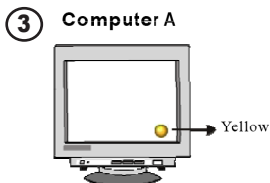
To make this computer ready to use the USB device, right-click the on-screen indicator icon or press Ctrl/F11.



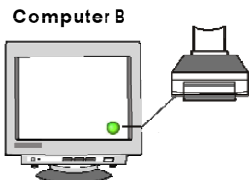
This computer is currently using the USB device.



While the USB device is being used by Computer A, switching to another computer is not allowed.



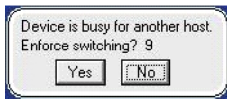
To make this computer ready to use the USB device, right-click the on-screen indicator icon or press Ctrl/F11.



This computer is connected to — and is ready to use — the USB device.

Signals will continue to be sent back and forth between your computer(s) and USB devices such as external hard drives and printers whenever they're connected through the switch. During these transmissions, USB auto-sharing can be confused, resulting in a red blinking indicator icon. To control USB auto-sharing without any "device busy" indications, press Ctrl/F11 to display the "Enforce switching" prompt, then click "Yes" to confirm any switching of ports.

NOTE: Even without the USB Sharing application installed (Mac, Linux), switching access to the connected USB device from one computer to another can be done manually by pressing the Select button on the top of the switch that corresponds to the desired port. If the Select button/LED is lit, the corresponding computer is already linked to the USB device. (Only one LED will light at any given time.) A flashing LED indicates that the corresponding port is processing a redirect command and is not yet ready for activity. (Refer to the Read Me file on the CD for details.)



Specifications

Standards and Certifications

- USB 2.0, USB 1.1, USB 1.0
- FCC
- CE
- WEEE

General

- Transfer speeds: 1.5 / 12 / 480 Mbps
- Model 162005, 2-port: (2) LED indicators; (2) mechanical switches
- Model 162012, 4-port: (4) LED indicators; (4) mechanical switches
- Bus powered

Ports

- Model 162005, 2-port: (1) A-type; (2) B-type
- Model 162012, 4-port: (1) A-type; (4) B-type

Physical

- Dimensions:
 - Model 162005, 2-port: 68 x 42 x 20 mm (2.7 x 1.6 x 0.78 in.); 39.6 g (1.4 oz.)
 - Model 162012, 4-port: 73 x 85 x 20 mm (2.8 x 3.3 x 0.78 in.) 87.8 g (3.1 oz.)
- USB A-type to B-type cable length: 1.5 m (5 ft.)
- Housing: ABS plastic

System requirements

- USB-enabled PC or Mac system
- Windows 2000/XP/Vista or Mac OS 9 or above
- Available USB port

Power

- Supply current from USB: 500 mA

Package Contents

- Hi-Speed USB 2.0 Automatic Sharing Switch
- USB cables, user manual and software CD



MANHATTAN™

BRINGING COMPUTERS TO LIFE

MANHATTAN® offers a complete line
of PC Components, Peripherals, Cables and Accessories.

Ask your local computer dealer for more information
or visit us online at

www.manhattan-products.com

Copyright © MANHATTAN

All products mentioned are trademarks or registered trademarks of their respective owners.