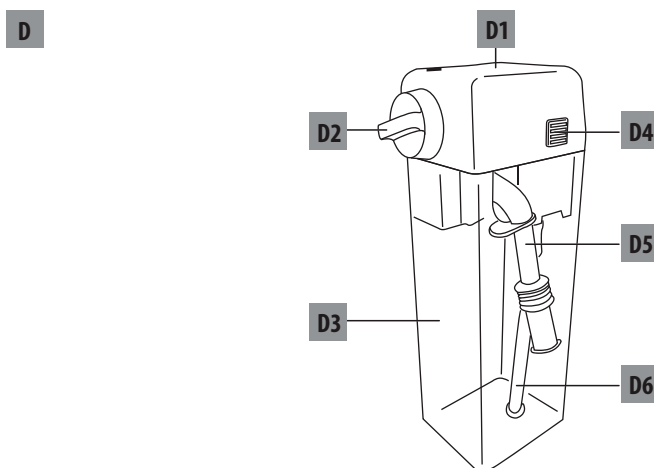
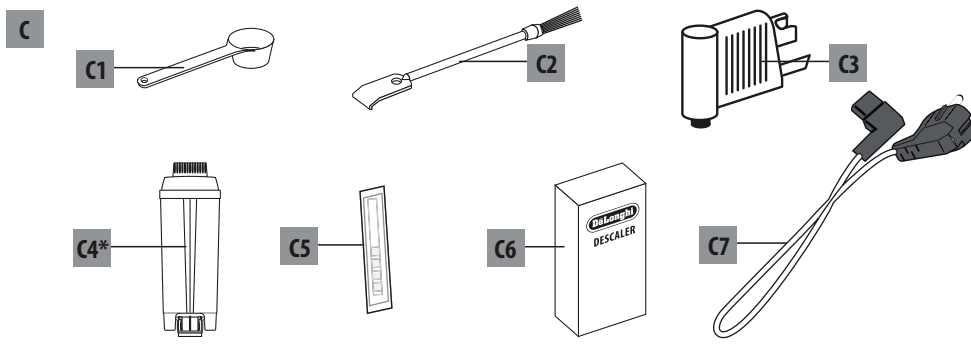
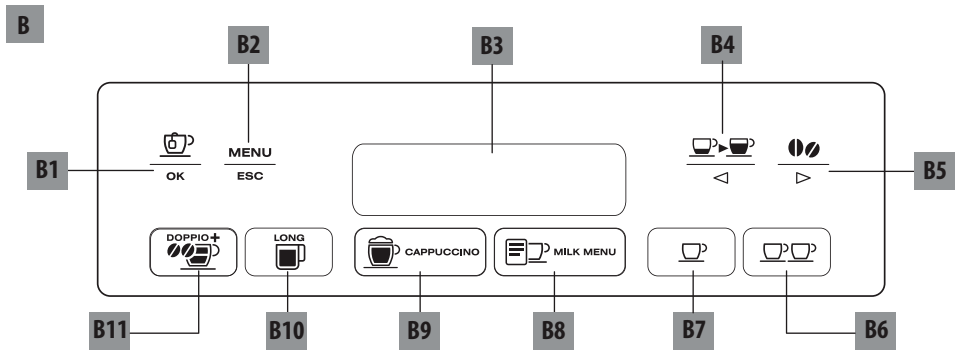
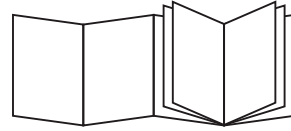

ETAM29.66X

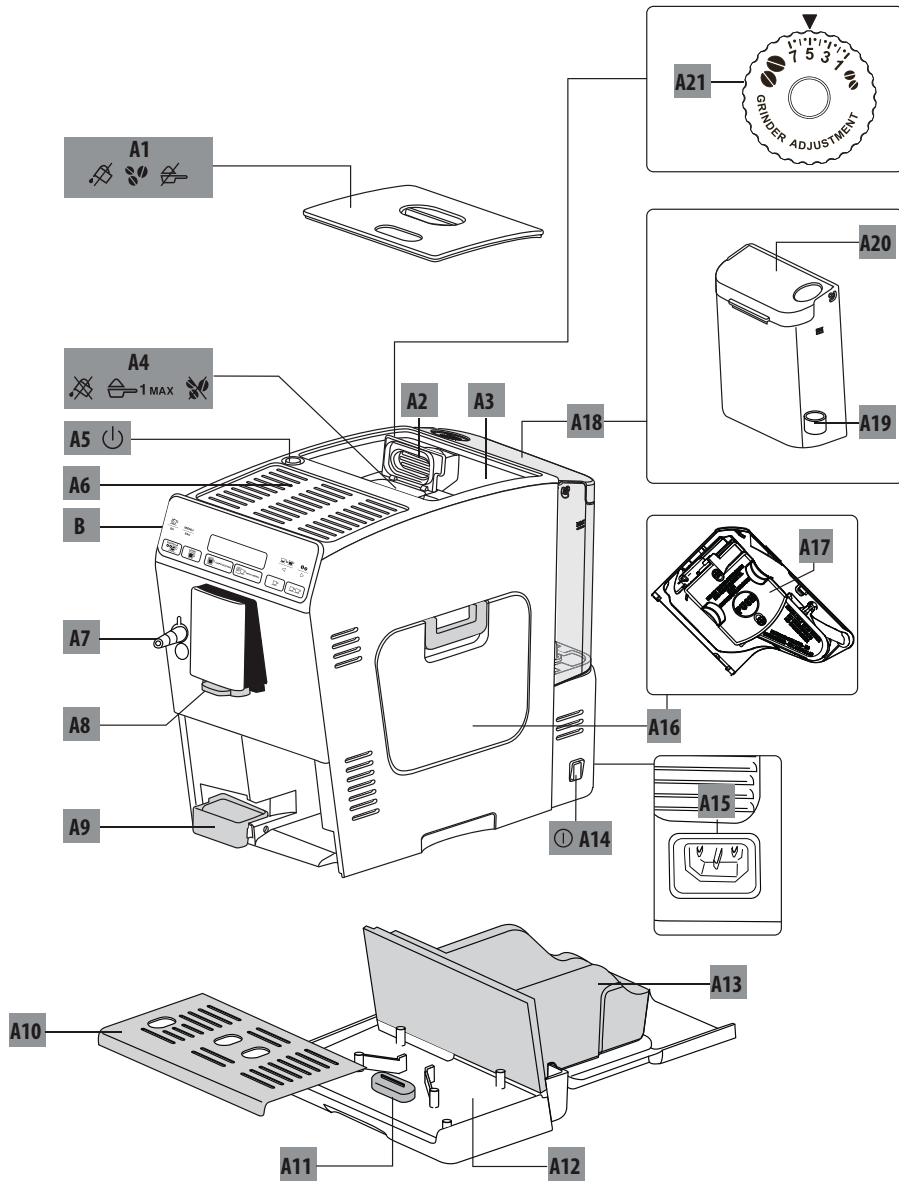
BEAN TO CUP ESPRESSO
AND CAPPUCCINO
MACHINE
Instruction for Use

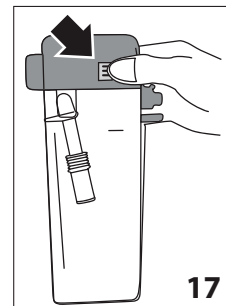
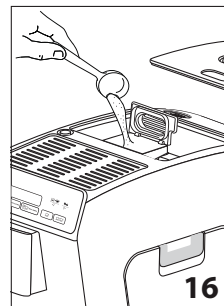
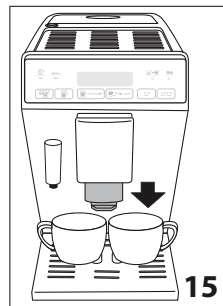
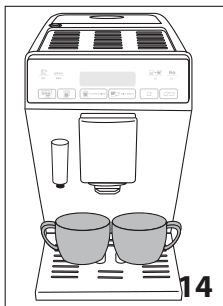
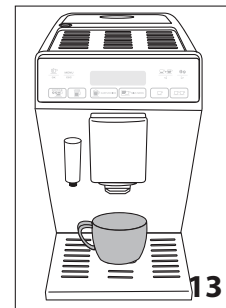
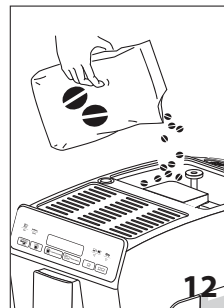
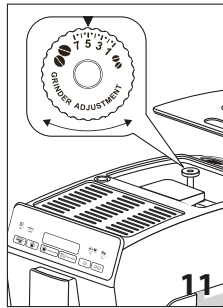
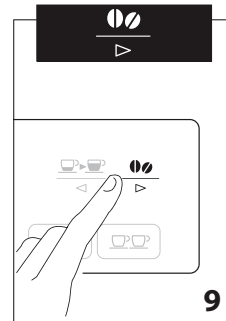
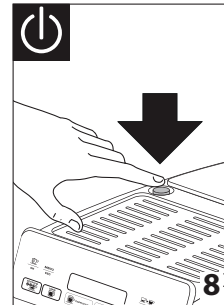
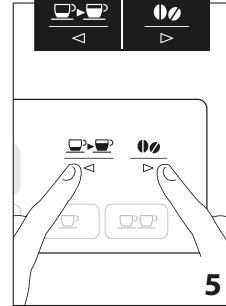
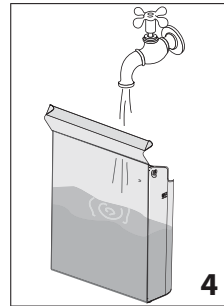
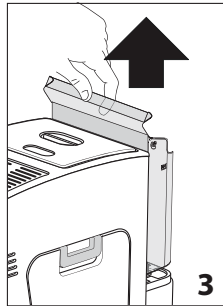
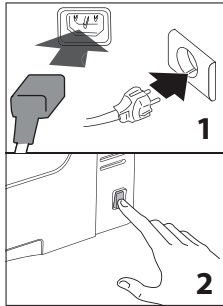


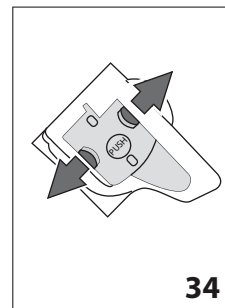
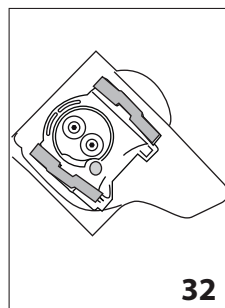
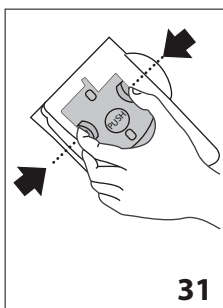
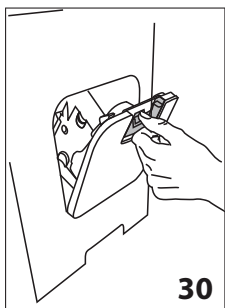
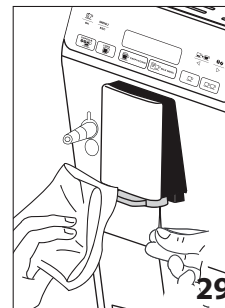
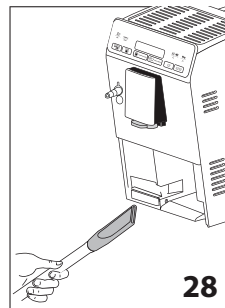
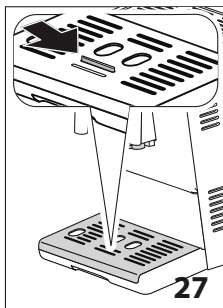
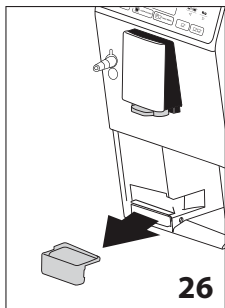
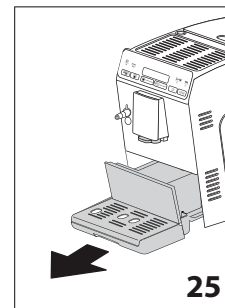
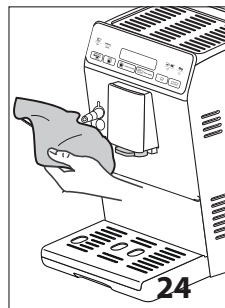
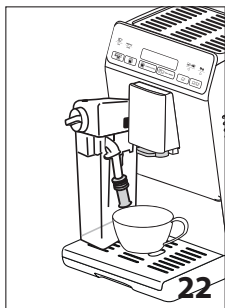
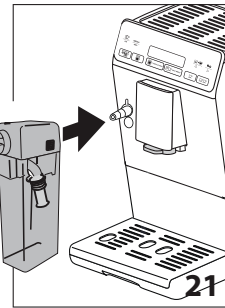
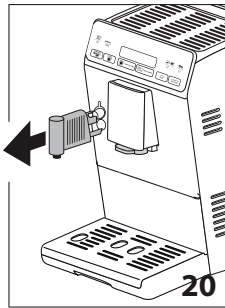
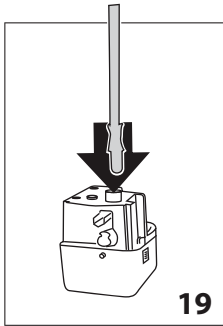
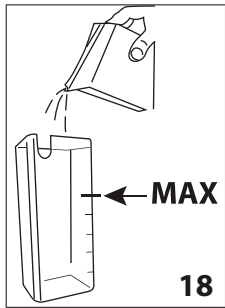
DeLonghi



A







CONTENTS	
FUNDAMENTAL SAFETY WARNINGS	7
IMPORTANT SAFEGUARDS	8
Symbols used in these instructions	8
Designated use	8
Instruction for Use.....	8
INTRODUCTION	8
Letters in brackets.....	8
Troubleshooting and repairs	8
DESCRIPTION	9
Description of the appliance	9
Description of the touch screen	9
Description of the accessories	9
Description of the milk container	9
BEFORE USE	9
Checking the appliance.....	9
Installing the appliance	9
Connecting the appliance	9
Setting up the appliance.....	10
TURNING THE APPLIANCE ON	10
TURNING THE APPLIANCE OFF	10
MENU SETTINGS	10
Rinsing.....	11
Descaling	11
Install filter	11
Replacing the limescale filter (if installed)	11
Adjust time	11
Auto-start	11
Auto-off (standby)	11
Energy saving.....	11
Setting the temperature	12
Setting water hardness	12
Setting the language	12
Beep	12
Default values (reset)	12
Statistics function	12
MAKING COFFEE	12
Selecting the coffee taste.....	12
Selecting the quantity of coffee in the cup.....	13
Customising the “my coffee” quantity	13
Adjusting the coffee mill	13
Tips for a hotter coffee	13
Making coffee using coffee beans	13
Making coffee using pre-ground coffee	14
Making DOPPIO+ coffee using coffee beans	14
Customising the DOPPIO+ coffee quantity	14
Making LONG coffee using coffee beans.....	14
Making LONG coffee using pre-ground coffee	14
Customising the “LONG coffee” quantity.....	14
MAKING CAPPUCCINOS AND MILK BASED COFFEES	15
Filling and attaching the milk container	15
Adjusting the amount of froth	15
Making cappuccino	15
Preparing “MILK MENU” drinks.....	15
Cleaning the milk container after use	15
Programming the quantity of coffee and milk in the cup for the CAPPUCCINO icon	16
Programming the quantity of coffee and milk in the cup for MILK MENU icon drinks	16
DELIVERING HOT WATER	16
Changing the quantity of water delivered automatically.	16
CLEANING	16
Cleaning the machine	16
Cleaning the coffee grounds container.....	17
Cleaning the drip tray and condensate tray.....	17
Cleaning the inside of the coffee machine	17
Cleaning the water tank.....	17
Cleaning the coffee spouts.....	17
Cleaning the pre-ground coffee funnel	17
Cleaning the infuser.....	17
Cleaning the milk container	18
Cleaning the hot water/steam connection nozzle ..	18
DESCALING	18
SETTING WATER HARDNESS	19
Measuring water hardness.....	19
Setting water hardness	20
WATER SOFTENER FILTER (*CERTAIN MODELS ONLY)	20
Installing the filter	20
Replacing the filter	20
Removing the filter.....	21
TECHNICAL DATA	21
DISPOSAL	21
DISPLAYED MESSAGES	21
TROUBLESHOOTING	23
ELECTRICAL REQUIREMENTS	24

FUNDAMENTAL SAFETY WARNINGS

- This appliance can be used by persons with reduced physical, sensory or mental capabilities or lack of experience and knowledge if they have been given supervision or instruction concerning use of the appliance in a safe way and understand the hazards involved.
- Children shall not play with the appliance.
- Never clean by immersing the appliance in water.
- This is an household appliance only. It is not intended to be used in: staff kitchen areas in shops, offices and other working environments; farm houses; by clients in hotels, motels and other residential type environments; bed and breakfast type environments.
- If the plug or cord is damaged, it must be replaced by Customer Services only to avoid all risk.

FOR EUROPEAN MARKETS ONLY:

- Always unplug the appliance when left unattended and before assembly, taking apart or cleaning.
- This appliance shall not be used by children. Keep the appliance and its cord out of reach of children.
- Appliances can be used by persons with reduced physical, sensory or mental capabilities or lack of experience and knowledge if they have been given supervision or instruction concerning use of the appliance in a safe way and if they understand the hazards involved.
- Children shall not play with the appliance.



Surfaces marked with this symbol become hot during use (the symbol is present in certain models only).

IMPORTANT SAFEGUARDS

Symbols used in these instructions

Important warnings are identified by these symbols. It is vital to respect these warnings.



Failure to observe the warning may result in life threatening injury by electric shock.



Failure to observe the warning could result in injury or damage to the appliance.



Failure to observe the warning could result in scalds or burns.



This symbol identifies important advice or information for the user.



This is an electrical appliance and may cause electric shock.

You should therefore follow these safety warnings:

- Never touch the appliance with damp hands or feet.
- Never touch the plug with damp hands.
- Make sure the socket used is freely accessible at all times, enabling the appliance to be unplugged when necessary.
- Unplug directly from the plug only. Never pull the cord as you could damage it.
- To disconnect the appliance completely you must unplug it from the mains socket.
- If the appliance is faulty, do not attempt to repair. Turn it off, unplug from the mains socket and contact Customer Services.
- Before cleaning the appliance, turn it off, unplug from the mains socket and allow to cool.



Keep all packaging (plastic bags, polystyrene foam) away from children.



This appliance produces hot water and steam may form while it is in operation.

Avoid contact with splashes of water or hot steam.

When the appliance is in operation, the cup shelf (A6) could become very hot.

Designated use

This appliance is designed and made to prepare coffee and heat drinks.

Any other use is considered improper and thus dangerous. The manufacturer is not liable for damage deriving from improper use of the appliance.

Instruction for Use

Read this Instruction for Use carefully before using the appliance. Failure to follow this Instruction for Use may result in burns or damage to the appliance.

The manufacturer is not liable for damage deriving from failure to respect this Instruction for Use.



Keep this Instruction for Use. If the appliance is passed to other persons, they must also be provided with this Instruction for Use.

INTRODUCTION

Thank you for choosing this bean to cup espresso and cappuccino machine.

We hope you enjoy using your new appliance. Take a few minutes to read this Instruction for Use. This will avoid all risks and damage to the appliance.

Letters in brackets

The letters in brackets refer to the legend in the description of the appliance on page 2-3.

Troubleshooting and repairs

In the event of problems, first try and resolve them following the information given in the sections "Displayed messages" on page 21 and "Troubleshooting" on page 23.


If this does not resolve the problem or you require further information, you should consult Customer Services by calling the number given on the annexed "Customer Service" sheet.

If your country is not among those listed on the sheet, call the number given in the guarantee. If repairs are required, contact De'Longhi Customer Services only. The addresses are given in the guarantee certificate provided with the machine.

DESCRIPTION

Description of the appliance

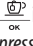

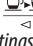

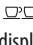





(page 3 - A)

- A1. Beans container lid
- A2. Pre-ground coffee funnel lid
- A3. Beans container
- A4. Pre-ground coffee funnel
- A5.  button: turns the appliance on and off (standby)
- A6. Cup shelf
- A7. Hot water and steam connection nozzle
- A8. Coffee spout (adjustable height)
- A9. Condensate tray
- A10. Cup tray
- A11. Drip tray water level indicator
- A12. Drip tray
- A13. Coffee grounds container
- A14. Main switch (ON/OFF)
- A15. Socket for power cable connector
- A16. Infuser door
- A17. Infuser
- A18. Water tank
- A19. Water softener filter housing
- A20. Water tank lid
- A21. Grinding adjustment dial

Description of the touch screen

(page 2 - B)

A number of icons on the touch screen have a double function. This is indicated in brackets in the description.

- B1.  icon: to deliver hot water (When in the settings menu, press to confirm the selection)
- B2.  icon: to access or exit the settings menu.
- B3. Display
- B4.  icon: to select the coffee quantity (When in the settings menu, press to scroll through the menu items)
- B5.  icon: to select the coffee taste (When in the settings menu, press to scroll through the menu items)
- B6.  icon: to make 2 cups of coffee with the settings displayed
- B7.  icon: to make 1 cup of coffee with the settings displayed
- B8.  MILK MENU icon: to select one of the available milk based drinks (CAFFELATTE, MACCHIATO, FLAT WHITE, MILK)
- B9.  CAPPUCINO icon: to deliver a cappuccino
- B10.  icon: to make one LONG coffee
- B11.  icon: to make one DOPPIO+ coffee

Description of the accessories

(page 2 - C)

- C1. Pre-ground coffee measure
- C2. Cleaning brush
- C3. Hot water spout
- C4. Water softener filter (*certain models only)
- C5. "Total Hardness Test" indicator paper
- C6. Descaler
- C7. Power cord

Description of the milk container

(page 2 - D)

- D1. Milk container lid
- D2. Froth adjustment and CLEAN dial
- D3. Milk container
- D4. Lid extraction button
- D5. Frothed milk spout (adjustable)
- D6. Milk intake tube

BEFORE USE

Checking the appliance

After removing the packaging, make sure the product is complete and undamaged and that all accessories are present. Do not use the appliance if it is visibly damaged. Contact De'Longhi Customer Services.

Installing the appliance

Important!

When you install the appliance, you should respect the following safety warnings:

- The appliance gives off heat. After positioning the appliance on the worktop, leave a space of at least 3 cm between the surfaces of the appliance and the side and rear walls and at least 15 cm above the appliance.
- Water penetrating the coffee machine could cause damage. Do not place the appliance near taps or sinks.
- The appliance could be damaged if the water it contains freezes. Do not install the appliance in a room where the temperature could drop below freezing point.
- Arrange the cord in such a way that it cannot be damaged by sharp edges or contact with hot surfaces (e.g. electric hot plates).

Connecting the appliance

Important!



Check that the mains power supply voltage corresponds to the value indicated on the rating plate on the bottom of the appliance.


Connect the appliance to an efficiently earthed and correctly installed socket with a minimum current rating of 10A only. If the power socket does not match the plug on the appliance, have the socket replaced with a suitable type by a qualified professional.

Setting up the appliance

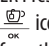
Please note :

- Coffee has been used to factory test the appliance and it is therefore completely normal for there to be traces of coffee in the mill. The machine is, however, guaranteed to be new.
 - You should customise water hardness as soon as possible following the instructions in the section “Setting water hardness” on page 19.
1. Insert the power cable connector into the socket at the back of the appliance and connect the appliance to the mains electricity supply (fig. 1). Make sure the main switch is pressed (fig. 2).
 2. Remove the water tank (fig. 3), open the lid (fig. 4), fill to the MAX line with fresh water, replace the lid and put the tank back in the appliance.

You must first choose the language by moving backwards and forwards with the  or  arrows (fig. 5), or waiting until the languages scroll through on the display at intervals of about 3 seconds:

3. When “English” appears, press and hold the  icon (fig. 6) for a few seconds until “ENGLISH set” is displayed.

Follow the instructions indicated on the appliance display:

4. “INSERT WATER SPOUT”: Check that the hot water spout is inserted on the connection nozzle and place a container holding a minimum of 100 ml underneath (fig. 7).
5. “HOT WATER Press OK” is displayed;
6. Press the  icon to confirm (fig. 6). The appliance delivers water from the spout then goes off automatically.

The coffee machine is now ready for normal use.

Please note :

- When setting up the appliance, you need to make 4-5 cups of coffee or 4-5 cappuccinos before the appliance starts to give satisfactory results.
- When making the first 5-6 cappuccinos, it is normal to hear the noise of boiling water. After this, the noise becomes less.
- To enjoy your coffee even more and improve the performance of your appliance, we recommend installing a water softener filter as described in the section “Water softener filter” (page 20). If your model is not provided with a filter, you can request one from De’Longhi Customer Services.


TURNING THE APPLIANCE ON

Please note!

- Before turning the appliance on, make sure the main switch is pressed (fig. 2).
- Each time the appliance is turned on, it performs an automatic preheat and rinse cycle which cannot be interrupted. The appliance is ready for use only after completion of this cycle.

Danger of burns!

During rinsing, a little hot water comes out of the coffee spouts and is collected in the drip tray underneath. Avoid contact with splashes of water.

- To turn the appliance on, press the  button (fig. 8). The message “Heating up, Please wait” is displayed.

When heating is complete, the message changes to “Rinsing”. As well as heating the boiler, this also heats the internal circuits by circulating hot water.


The appliance is at temperature when the message indicating the taste and quantity of coffee appears.

TURNING THE APPLIANCE OFF

Whenever the coffee machine is turned off after being used to make coffee, it performs an automatic rinse cycle.


Danger of burns!

During rinsing, a little hot water flows from the coffee spouts. Avoid contact with splashes of water.

- To turn the appliance off, press the  button (fig. 8).
- The appliance performs a rinse cycle, then the message “Turning off Please wait” is displayed and the appliance goes off (standby).

Please note!




If you will not be using the appliance for some time, unplug from the mains socket:

- first turn the appliance off by pressing the  button (fig. 8);
- press the main switch on the side of the appliance (fig. 2).

Important!



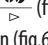

Never press the main switch while the appliance is on.

MENU SETTINGS

To access the settings menu, press the  icon (B2). Scroll through the menu by pressing  or  (fig. 5).

Rinsing

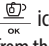
Use this function to deliver hot water from the coffee spout (A8) and from the hot water spout (C3), if inserted, to clean and heat the appliance's internal circuit. Place a container with a minimum capacity of 100ml under the coffee and hot water spout. To enable the function, proceed as follows:

1. Press the  icon (B2) to enter the menu;
2. Press  or  (fig. 5) until "Rinsing" is displayed;
3. Press the  icon (fig.6), "Confirm?" is displayed;



Important! Danger of burns.

Do not leave the appliance unattended while hot water is being delivered.

4. Press the  icon: after a few seconds, hot water is delivered first from the coffee spout and then from the hot water spout (if inserted) which cleans and heats the appliance's internal circuit.



Please note!

- To stop delivery at any time, press any icon.
- If the appliance is not used for more than 3-4 days, we strongly recommend, when switching on the appliance, performing 2/3 rinses before using it.

Descaling

For instructions on descaling, see page 18.

Install filter

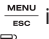

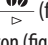
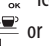


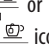



For Instruction for use on how to install the filter, see the section "Water softener filter" (page 20).


Replacing the limescale filter (if installed)

For Instruction for use on how to replace the filter, see the section "Replacing the filter" (page 20).

Adjust time

To adjust the time on the display, proceed as follows:

1. Press the  icon (B2) to enter the menu;
2. Press  or  (fig. 5) until "Adjust time" is displayed;
3. Press the  icon (fig. 3). The hours flash on the display;
4. Press  or  to change the hour;
5. Press the  icon to confirm. The minutes flash;
6. Press  or  to change the minutes;
7. Press the  icon to confirm.

This sets the time. Press the  icon to exit the menu.

Auto-start




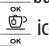
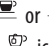

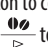

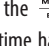
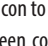

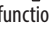
You can set the auto-start time in order to have the appliance ready at a certain time (for example in the morning) so you can make coffee immediately.




Please note!


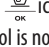
To enable this function, the time must already be set correctly.

To enable auto-start, proceed as follows:

1. Press the  icon (B2) to enter the menu;
2. Press  or  (fig. 5) until "Auto-start" is displayed;
3. Press the  button (fig. 3). "Enable?" is displayed;
4. Press the  icon to confirm;
5. Press  or  to choose the hour;
6. Press the  icon to confirm;
7. Press  or  to change the minutes;
8. Press the  icon to confirm;
9. Press the  icon to exit the menu.

Once the time has been confirmed, activation of auto-start is indicated by the  symbol displayed alongside the time.


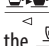
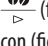
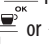

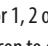


To disable the function:

1. Select auto-start from the menu;
2. Press the  icon. "Disable?" is displayed;
3. Press the  icon to confirm.

The  symbol is no longer displayed.

Auto-off (standby)

Auto-off can be set so that the appliance goes off after 15 or 30 minutes, or 1, 2 or 3 hours. To programme Auto-off, proceed as follows:



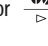
1. Press the  (B2) icon (B2) to enter the menu;
2. Press  or  (fig. 5) until "Auto-off" is displayed;
3. Press the  icon (fig. 6);
4. Press  or  until the required operating time (15 or 30 minutes, or 1, 2 or 3 hours) is displayed;
5. Press the  icon to confirm;
6. Press the  icon to exit the menu.


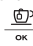

Auto-off is programmed.

Energy saving

Use this function to enable or disable energy saving. When enabled, the function reduces energy consumption in compliance with European regulations.

To disable (or enable) energy saving, proceed as follows:

1. Press the  icon (B2) to enter the menu;
2. Press  or  (fig. 5) until "Energy Saving" is displayed;

3. Press the  icon (fig. 6). "Disable?" is displayed (or "Enable?" if the function has been disabled);
4. Press the  icon to disable (or enable) energy saving mode;
5. Press the  icon to exit the menu.



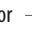


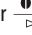

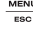
When the function is active, if the machine is not used for some time, "Energy saving" is displayed.

Please note!

- When in energy saving mode, a few seconds elapse before the first coffee, cappuccino or milk based coffee is delivered as the appliance must heat up again.
- To prepare any drink, press any icon to exit energy saving, then press the icon corresponding to the drink you want to make.
- If the milk container is inserted, "Energy saving" is not activated.

Setting the temperature

To modify the temperature of the water used to make the coffee, proceed as follows:



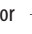





1. Press the  icon (B2) to enter the menu;
2. Press  or  (fig. 5) until "Set temperature" is displayed;
3. Press the  icon (fig. 6);
4. Press  or  until the required temperature is displayed (●=low; ●●●●=maximum);
5. Press the  icon to confirm;
6. Press the  icon to exit the menu.

Setting water hardness

For instructions on setting water hardness, see page 19.



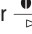
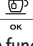


Setting the language

To modify the language of the display, proceed as follows:

1. Press the  icon (B2) to enter the menu;
2. Press  or  (fig. 5) until "Set language" is displayed;
3. Press the  icon (fig. 6);
4. Press the  or  button until the required language is displayed ;
5. Press the  icon to confirm;
6. A message confirming the language installed is displayed;
7. Press the  icon to exit the menu.

Beep



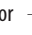

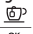
This enables or disables the buzzer emitted by the machine each time an icon or button is pressed or an accessory is inserted/removed. To disable or re-enable the beep, proceed as follows:

1. Press the  icon (B2) to enter the menu;
2. Press  or  (fig. 5) until "Beep" is displayed;
3. Press the  icon (fig.6), "Disable?" is displayed; (or "Enable?" if the function has been disabled);
4. Press the  icon to enable or disable the beep;
5. Press the  icon to exit the menu.

Default values (reset)



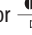

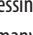
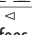

This resets all menu settings and programmed quantities back to the default values (with the exception of the language which remains as set).

To reset the default values, proceed as follows:

1. Press the  icon (B2) to enter the menu;
2. Press  or  (fig. 5) until "Default values" is displayed;
3. Press the  icon (fig. 6);
4. The message "Confirm?" is now displayed;
5. Press the  icon to confirm and exit.

Statistics function

This displays statistics relating to the machine. To display, proceed as follows:

1. Press the  icon (B2) to enter the menu;
2. Press  or  (fig. 5) until "Statistics" is displayed;
3. Press the  icon (fig. 6);
4. By pressing  or  you can check:
 - how many coffees have been made;
 - the total number of cappuccinos and milk based coffees made;
 - the total number of litres of water delivered;
 - how many times the machine has been descaled;
 - how many times the water softener filter has been replaced.
5. Press the  icon twice to exit the menu.

MAKING COFFEE

Selecting the coffee taste

The appliance is set by default to make coffee with a standard taste.

You can also choose one of these tastes:

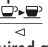
Extra-mild taste
Mild taste
Standard taste

Strong taste

Extra-strong taste

To change the taste, press the  icon (fig. 9) repeatedly until the required taste is displayed.


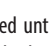
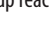
Selecting the quantity of coffee in the cup

The appliance is set by default to make a standard quantity of coffee. To select the quantity of coffee, press the  icon (fig. 10) until the message corresponding to the required quantity of coffee is displayed:

Coffee selected	Quantity in cup (ml)
MY COFFEE	Programmable: from ≈20 to ≈180
SHORT	≈40
STANDARD	≈60
LONG	≈90
EXTRA LONG COFFEE	≈120

Customising the “my coffee” quantity

The appliance is set by default to automatically deliver 30 ml of “MY COFFEE”. To modify this quantity, proceed as follows:

1. Place a cup under the coffee spouts (fig. 13).
2. Press the  icon (fig. 10) until “MY COFFEE” is displayed.
3. Keep the  icon (B7) pressed until the message “1 MY COFFEE Program quantity” is displayed and coffee delivery begins. Release the icon.
4. As soon as the coffee in the cup reaches the required level, press the  icon again.

The quantity of coffee in the cup has now been programmed.

Adjusting the coffee mill

The coffee mill is set by default to prepare coffee correctly and should not require regulating initially.

However, if after making the first few coffees you find that the coffee is either too weak and not creamy enough or delivery is too slow (a drop at a time), this can be corrected by adjusting the grinding adjustment dial (fig. 11).

Please note!

The grinding adjustment dial must only be turned when the coffee mill is in operation.



If the coffee is delivered too slowly or not at all, turn one click clockwise towards “7”.

For fuller bodied creamier coffee, turn one click anticlockwise towards “1” (do not turn more than one click at a time otherwise the coffee could be delivered

a drop at a time). These adjustments will only be evident after at least 2 cups of coffee have been delivered. If this adjustment does not obtain the desired result, turn the dial another click.

Tips for a hotter coffee

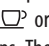
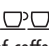
For hotter coffee, you should:

- perform a rinse cycle by selecting the “Rinsing” function in the settings menu (page 10).
- warm the cups with hot water (using the hot water function);
- increase the coffee temperature in the settings menu (page 12).

Making coffee using coffee beans

Important!

Do not use caramelised or candied coffee beans as they could stick to the coffee mill and make it unusable.

1. Fill the container with coffee beans (fig. 12).
2. Place under the coffee spouts:
 - 1 cup, if you want to make 1 coffee (fig. 13);
 - 2 cups, if you want 2 coffees (fig. 14).
3. Lower the spouts as near as possible to the cup. This makes a creamier coffee (fig. 15).
4. Press the icon corresponding to the number of coffees required (one cup  or two cups ).
5. Preparation begins. The amount of coffee selected is displayed together with a progress bar which gradually fills as preparation progresses.

Please note:

- While the machine is making coffee, delivery can be interrupted at any moment by pressing any icon.
- At the end of delivery, to increase the quantity of coffee in the cup, just press one of the coffee icons (B6 or B7) (within 3 seconds).

Once the coffee has been made, the appliance is ready to make the next drink.

Important!

- Various alarm messages could be displayed while using the machine (FILL TANK, EMPTY GROUNDS CONTAINER,

etc.). Their meaning is explained in the section “Displayed messages” (page 23).

- For hotter coffee, see the section “Tips for a hotter coffee” (page 13).
- If the coffee is delivered a drop at a time, too weak and not creamy enough or too cold, read the tips in the “Trouble-shooting” section (page 23).


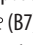
Making coffee using pre-ground coffee

Important!

- Never place coffee beans in the pre-ground coffee funnel as this could damage the appliance.
- Never add pre-ground coffee when the machine is off or it could spread through the inside of the machine and dirty it. This could damage the appliance.
- Never use more than 1 level measure or it could dirty the inside of the coffee machine or block the funnel.

Please note!


When you use pre-ground coffee, you can only make one cup of coffee at a time.

1. Press the  icon repeatedly (fig. 9) until “Pre-ground” is displayed.
2. Open the pre-ground coffee funnel lid (A2).
3. Make sure the funnel is not blocked, then add one level measure of pre-ground coffee (fig. 16).
4. Place a cup under the coffee spouts (fig. 13).
5. Press the 1 cup coffee icon  (B7).
6. Preparation begins. The amount of coffee selected is displayed together with a progress bar which gradually fills as preparation progresses.

Please note!


If “Energy Saving” mode is active, you may have to wait a few seconds before the first coffee is delivered.



Making DOPPIO+ coffee using coffee beans

Prepare the appliance following the instructions in the section “Making coffee using coffee beans”, then press the  icon (B11).

Customising the DOPPIO+ coffee quantity

The appliance is set by default to deliver about 120 ml of DOPPIO+ coffee. To modify these settings, proceed as follows:

1. Place a sufficiently large cup or glass under the coffee spouts (fig. 13);
2. Press and hold the  icon (B11) until “Program quantity” is displayed;

3. Release the  icon. The appliance starts delivering coffee;
4. As soon as the coffee in the cup reaches the required level, press the  icon again.


The quantity of coffee in the cup has now been programmed.

Please note!



You can programme a minimum quantity of about 80ml.

You can programme a maximum quantity of about 160ml.

Making LONG coffee using coffee beans




Prepare the appliance following the instructions in the section “Making coffee using coffee beans”, then press the  icon (B10).

Making LONG coffee using pre-ground coffee

1. Follow the instructions in points 1, 2, 3 and 4 of the section “Making coffee using pre-ground coffee”, then press the  icon (B10).
2. The appliance starts making coffee and displays a progress bar. Halfway through preparation, the message “ADD PRE-GROUND COFFEE, Press OK” appears.
3. Add one level measure of pre-ground coffee and press  (fig. 6).
4. Preparation resumes and the appliance displays a progress bar which fills gradually as preparation proceeds.

Customising the “LONG coffee” quantity

The appliance is set by default to automatically deliver about 200ml of LONG coffee. To modify these settings, proceed as follows:

1. Place a sufficiently large cup or glass under the coffee spouts (fig. 13).
2. Press and hold the  icon (B10) until “Program quantity” is displayed.
3. Release the  icon. The appliance starts delivering coffee.
4. As soon as the coffee in the cup reaches the required level, press the  icon again.

The quantity of coffee in the cup has now been programmed.

Please note!

If the programme uses pre-ground coffee, the appliance will prompt you to add a second level measure of coffee.

MAKING CAPPUCCINOS AND MILK BASED COFFEES

Please note!

- To avoid producing milk with poor froth or large bubbles, always clean the milk container lid and hot water nozzle as described in the section "Cleaning the milk container" on pages 15 and 18.

Filling and attaching the milk container




- Remove the lid (fig. 17);
- Fill the milk container with a sufficient quantity of milk, not exceeding the MAX level marked on the handle (fig. 18). Each mark on the side of the container corresponds to about 100 ml of milk.

Please note!

- For a denser more even froth, you must use skimmed or partially skimmed milk at refrigerator temperature (about 5°C).
 - If "Energy saving" mode is enabled, you may have to wait a few seconds before the drink is delivered.
- Make sure the milk intake tube is correctly inserted in the bottom of the milk container lid (fig. 19).
 - Place the lid back on the milk container.
 - Remove the hot water spout (C3) (fig. 20).
 - Attach the milk container to the connection nozzle and push as far as it will go (fig. 21). The machine emits a beep (if the beep function is enabled).
 - Place a sufficiently large cup under the coffee spouts and the frothed milk spout. Adjust the length of the milk spout (fig. 22). To move it nearer the cup, simply pull it downwards.
 - Follow the Instruction for use below for each function.


Adjusting the amount of froth

Turn the froth adjustment dial (D2) to adjust the amount of froth on the milk delivered while making cappuccino and milk based coffees.

Dial position	Description	Recommended for...
	No froth	CAFFELATTE / MILK (hot milk)
	Min. froth	LATTE MACCHIATO / FLAT WHITE
	Max. froth	CAPPUCCINO / MILK (frothed milk)

Making cappuccino




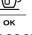
The icon (B9) on the control panel enables CAPPUCCINO to be prepared automatically. Proceed as follows:

- Fill the milk container and attach it as described above.
- Turn the froth adjustment dial on the milk container lid to the position corresponding to the required froth (see previous table).
- Press the  CAPPUCCINO icon (B9). The name of the drink selected is displayed together with a progress bar which gradually fills as preparation progresses.
- After a few seconds, frothed milk is delivered from the milk spout into the cup below. Then the machine automatically makes the coffee after delivering the milk.

Preparing "MILK MENU" drinks

Besides the drinks described above, the appliance automatically prepares CAFFELATTE, MACCHIATO, FLAT WHITE and MILK.

To prepare one of these drinks, simply proceed as follows:

- Fill the milk container and attach it as described above.
- Turn the froth adjustment dial on the milk container lid to the position corresponding to the required froth.
- Press the  MILK MENU icon (B8).
- Press  or  (fig. 5) until the required drink is displayed (CAFFELATTE, MACCHIATO, FLAT WHITE, MILK).
- Press the  icon (fig. 6) to start delivery.
- After a few seconds, frothed milk is delivered from the milk spout into the cup below. For drinks with coffee, the machine automatically makes the coffee after delivering the milk.

Please note: general indications when preparing all milk based drinks

- If you want to interrupt preparation during delivery, press the corresponding icon.
- At the end of delivery, to increase the quantity of milk or coffee in the cup, just press and hold (within 3 seconds) the icon corresponding to the drink being made.
- Do not leave the milk container out of the refrigerator for long periods. The warmer the milk (5°C is ideal), the poorer the quality of froth produced.

Cleaning the milk container after use

Important! Danger of burns

When cleaning the internal tubes of the milk container, a little hot water and steam leak out of the frothed milk spout. Avoid contact with splashes of water.

"SET DIAL TO CLEAN" flashes on the display each time you use a milk function. To eliminate all milk residues, proceed as follows:

- Leave the milk container in the machine (you do not need to empty it);


- Place a cup or other recipient under the milk spout (fig. 22).
- Turn the froth adjustment dial to "CLEAN" (fig. 23). A progress bar appears and gradually fills as the operation proceeds together with "Cleaning underway". Cleaning stops automatically.
- Turn the dial back to one of the froth selections.
- Remove the milk container and always clean the steam connection nozzle with a sponge (fig. 24).

i Please note!

- To prepare a number of cappuccinos or milk based coffees, clean the milk container after you have prepared the last drink only.
- The milk container can be kept in the refrigerator.
- In some cases, to clean you must wait for the appliance to heat up.

Programming the quantity of coffee and milk in the cup for the CAPPUCCINO icon

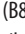




The appliance is set by default to automatically deliver standard quantities. To change these quantities, proceed as follows:

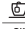
- Place a cup under the coffee spouts and milk spout (fig. 22).
- Press and hold the  CAPPUCCINO icon (B9) until and the name of the drink and "PROGRAM MILK" are displayed.
- Release the icon. The appliance starts delivering milk.
- Once the required quantity of milk has been delivered into the cup, press the icon again.
- The appliance stops delivering milk and, if required for the drink being prepared, after a few seconds the coffee is delivered into the cup. The name of the drink and "PROGRAM COFFEE" are displayed.
- As soon as the coffee in the cup reaches the required level, press the icon again. Coffee delivery stops.

The machine is now reprogrammed with the new milk and coffee quantities.

Programming the quantity of coffee and milk in the cup for MILK MENU icon drinks

The appliance is set by default to automatically deliver standard quantities. To change these quantities, proceed as follows:

- Press the  MILK MENU icon (B8).
- Press  or  (fig. 5) until the required drink is displayed (CAFFELATTE, MACCHIATO, FLAT WHITE, MILK).
- Press and hold the  icon (fig. 6) until and the name of the drink and "PROGRAM MILK" are displayed.
- Release the icon. The appliance starts delivering milk.
- When the required quantity of milk has been delivered into the cup, press the  icon.

- The appliance stops delivering milk and, if required for the drink being prepared, after a few seconds the coffee is delivered into the cup. The name of the drink and "PROGRAM COFFEE" are displayed.
- As soon as the coffee in the cup reaches the required level, press the  icon again. Coffee delivery stops.

The machine is now reprogrammed with the new milk and coffee quantities.

DELIVERING HOT WATER



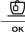

Important! Danger of burns.

Do not leave the appliance unattended while hot water is being delivered.



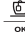
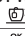
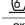
Please note!

If "energy saving" mode is active, you may have to wait a few seconds before the hot water is delivered.

- Make sure the hot water spout is attached correctly (fig. 7).
- Place a container under the spout (as close as possible to avoid splashes).
- Press the  icon (B1). "HOT WATER" is displayed, together with a progress bar which fills gradually as preparation proceeds.
- The machine delivers about 250 ml of hot water, then delivery stops automatically. To interrupt delivery of the hot water manually, press the  icon again.

Changing the quantity of water delivered automatically.

The machine is set by default to automatically deliver 250 ml of hot water. To modify these quantities, proceed as follows:

- Position a container under the spout (fig. 7).
- Press the  icon (B1) again until "HOT WATER Program Quantity" is displayed, then release the  icon.
- When the hot water in the cup reaches the required level, press the  icon again.

The machine is now reprogrammed with the new quantity.

CLEANING

Cleaning the machine

The following parts of the machine must be cleaned regularly:

- coffee grounds container (A13),
- drip tray (A12),
- water tank (A18),
- coffee spouts (A8),
- pre-ground coffee funnel (A2),
- infuser (A17), accessible after opening the service door (A16),
- touch screen (B)
- milk container (D)

 **Important!**

- Do not use solvents, abrasive detergents or alcohol to clean the coffee machine. With De'Longhi superautomatic coffee machines, you need not use chemical products to clean the machine.
- None of the components of the appliance can be washed in a dishwasher with the exception of the milk container (D).
- Do not use metal objects to remove encrustations or coffee deposits as they could scratch metal or plastic surfaces.

Cleaning the coffee grounds container

When "EMPTY GROUNDS CONTAINER" is displayed, the grounds container must be emptied and cleaned. The appliance cannot be used to make coffee until you have cleaned the grounds container. Even if not full, the empty grounds container message is displayed 72 hours after the first coffee has been prepared. For the 72 hours to be calculated correctly, the machine must never be turned off with the main switch.

 **Important! Danger of burns**

If you make a number of cappuccinos one after the other, the metal cup tray becomes hot. Wait for it to cool down before touching it and handle it from the front only.

To clean (with the machine on):

- Remove the drip tray (fig. 25), empty and clean.
- Empty the grounds container (A13) and clean thoroughly to remove all residues left on the bottom. This can be done using the spatula on the brush (C2) provided.
- Check the condensate tray (A9) and empty if necessary (fig. 26).

 **Important!**

When removing the drip tray, the grounds container must be emptied, even if it contains few grounds. If this is not done, when you make the next coffees, the grounds container may fill up more than expected and clog the machine.

Cleaning the drip tray and condensate tray

 **Important!**

The drip tray (A12) is fitted with a level indicator (red) (A11) showing the level of water it contains (fig. 27). Before the indicator protrudes from the cup tray, the drip tray must be emptied and cleaned, otherwise the water may overflow the edge and damage the appliance, the surface it rests on or the surrounding area.

To remove the drip tray:

1. Remove the drip tray and the grounds container (fig. 25);
2. Empty and wash the drip tray (A12) and grounds container (A13);

3. Check the condensate tray (A9) and empty if necessary;
4. Replace the drip tray and grounds container.

Cleaning the inside of the coffee machine

 **Danger of electric shock!**

Before cleaning internal parts, the machine must be turned off (see "Turning off", page 10) and unplugged from the mains power supply. Never immerse the coffee machine in water.

1. Check regularly (about once a week) that the inside of the appliance (accessible after removing the drip tray (A12)) is not dirty. If necessary, remove coffee deposits with the brush (C2) supplied and a sponge.
2. Remove the residues with a vacuum cleaner (fig. 28).

Cleaning the water tank

1. Clean the water tank (A18) regularly (about once a month and whenever you replace the water softener filter (C4) (if provided) with a damp cloth and a little mild washing up liquid.
2. Remove the filter (if present) and rinse with running water.
3. Replace the filter (if present), fill the tank with fresh water and replace the tank.
4. (Models with water softener filter only) Deliver about 100ml of hot water to reactivate the filter.

Cleaning the coffee spouts

1. Clean the coffee spouts regularly with a sponge or cloth (fig. 29).
2. Check the holes in the coffee spout are not blocked. If necessary, remove coffee deposits with a toothpick (fig. 29).

Cleaning the pre-ground coffee funnel

Check regularly (about once a month) that the pre-ground coffee funnel (A4) is not blocked. If necessary, remove coffee deposits with the brush (C2) supplied.

Cleaning the infuser

The infuser (A17) must be cleaned at least once a month.

 **Important!**

The infuser may not be extracted when the machine is on.

1. Make sure the machine is correctly turned off (see "Turning off", page 10).
2. Open the infuser door (fig. 30) on the right side of the appliance.
3. Press the two red release buttons inwards and at the same time pull the infuser outwards (fig. 31).
4. Soak the infuser in water for about 5 minutes, then rinse under the tap.

! Important!

RINSE WITH WATER ONLY

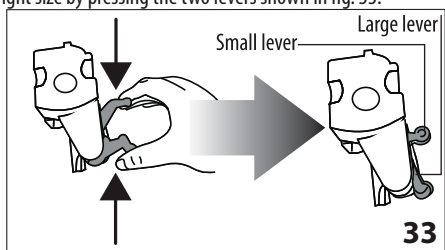
NO WASHING UP LIQUID - NO DISH WASHER

Clean the infuser without using washing up liquid as it could be damaged.

5. Use the brush (C2) to remove any coffee residues left in the infuser housing, visible through the infuser door.
6. After cleaning, replace the infuser by sliding it onto the internal support (fig. 32), then push the PUSH symbol fully in until it clicks into place.

i Please note!

If the infuser is difficult to insert, before insertion, adapt it to the right size by pressing the two levers shown in fig. 33.

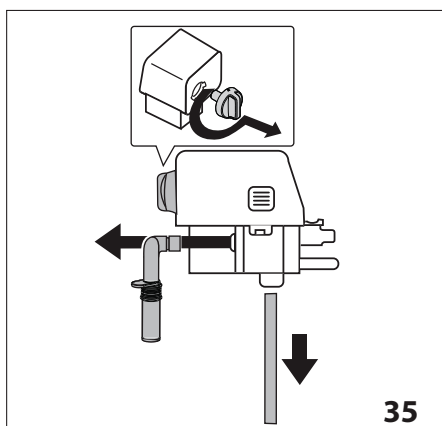


7. Once inserted, make sure the two red buttons have snapped out (fig. 34).
8. Close the infuser door (A16).

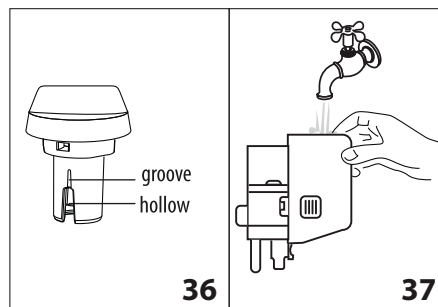
Cleaning the milk container

To keep the frother efficient, clean the milk container as described below, every two days:

1. Remove the lid (fig. 17).
2. Remove the milk spout and intake tube (fig. 35).
3. Turn anticlockwise the froth regulator to the "INSERT" position (fig. 35) and pull it off outwards.



4. Wash all the components thoroughly with hot water and mild washing-up liquid. All components are dishwasher safe, placing them in the top basket of the dishwasher. Make sure there are no milk residues on the hollow and groove under the dial (fig. 36). If necessary, scrape the groove with a toothpick.



5. Rinse inside the froth adjustment dial seat with running water (fig. 37).
6. Check that the intake tube and spout are not clogged with milk residues.
7. Replace the dial (in correspondence to the word "INSERT"), spout and milk intake tube.
8. Place the lid back on the milk container.

Cleaning the hot water/steam connection nozzle




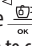

Each time you prepare milk, clean the connection nozzle with a sponge to remove milk residues from the gaskets (fig. 24).

DESCALING

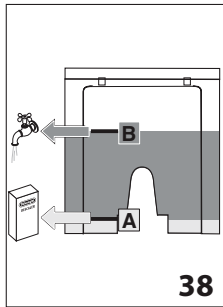
Descal the machine when the message "DESCALE" flashes on the display.

! Important!

- Descaler contains acids which may irritate the skin and eyes. It is vital to respect the manufacturer's safety warnings given on the descaler pack and the warnings relating to the procedure to follow in the event of contact with the skin and eyes.
- You should use De'Longhi descaler only. Using unsuitable descaler and/or performing descaling incorrectly may result in faults not covered by the manufacturer's guarantee.

1. Turn the coffee machine on.
2. Press the  icon (B2) to enter the menu.
3. Press  or  (fig. 5) until "Descaling" is displayed.
4. Press the  icon (fig. 6), "Confirm?" is displayed. Press the  icon to confirm.

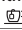
5. EMPTY DRIP TRAY" is displayed, alternating with "REMOVE FILTER" (if the filter is present) and "Add descaler Press OK".
6. Empty the water tank (A18) completely and remove the water softener filter (C4) (if present). Empty the drip tray (fig. 25) and grounds container (A13), then put them back in the appliance.



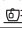
7. Pour the descaler into the tank up to level A (corresponding to a 100 ml pack) marked on the back of the tank (fig. 38), then add water (1 litre) up to level B (fig. 38) and put the water tank back.
8. Place an empty container with a minimum capacity of 1.5 litres under the hot water spout (fig. 7).


⚠ Important! Danger of burns

Hot water containing acid flows out of the hot water spout. Avoid contact with splashes of water.

9. Press the  icon to confirm that you have added the solution. The descale programme automatically performs a series of rinses and pauses to remove limescale deposits from inside the machine. The message "Descalé underway" is displayed. The descale programme starts and the descaler liquid comes out of the water spout.


After about 30 minutes, the messages "RINSING" and "FILL TANK" alternate on the display.

10. The appliance is now ready for rinsing through with clean water. Remove the water tank, empty, rinse under running water, fill with fresh water up to the MAX level and put back in the appliance: the message "RINSING, Press OK" is displayed.
11. Empty the container used to collect the descaler solution and replace it empty under the hot water spout.
12. Press the  icon to start rinsing. Hot water flows out of the spout and the message "RINSING, Please wait" is displayed.
13. When the water tank is completely empty, the messages "RINSING", "REPLACE FILTER" (if previously removed) and "FILL TANK" alternate on the display.
14. Remove the water tank, replace the filter (if previously removed), fill the tank up to the MAX level with fresh water and insert it in the appliance: the display will show "RINSE Press OK".
15. Empty the container used to collect the rinsing water and replace it, empty, under the hot water spout;

16. Press the  icon to restart rinsing: the message "RINSING Please wait" appears on the display, water is delivered from the hot water spout and the rinsing cycle finishes when water is delivered from the coffee spout (A8).

⚠ Important! Danger of burns.

Do not leave the appliance unattended while hot water is being delivered.

17. When the water tank is completely empty, the message "Rinsing Complete, Press OK" is displayed.
18. Press the  icon.
19. The message "FILL TANK" appears on the display; when the tank is filled and replaced the message "Heating please wait" appears on the display, after which the machine is ready to use.

i Please note!

If the descaling cycle is not completed correctly (e.g. lack of electricity) we recommend repeating the cycle.

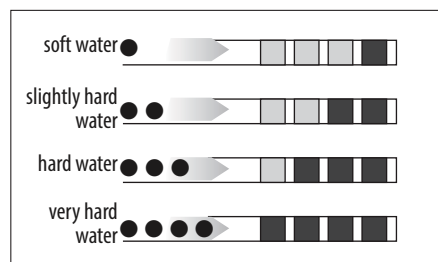
SETTING WATER HARDNESS

The DESCALE message is displayed after a period of time established according to water hardness.



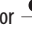
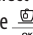



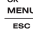
The machine is set by default for a hardness value of 4. The machine can also be programmed according to the hardness of the mains water in the various regions so that the machine needs to be descaled less often.

Measuring water hardness

1. Remove the "TOTAL HARDNESS TEST" indicator paper from its pack (attached to the English instructions).
2. Immerse the paper completely in a glass of water for one second.
3. Remove the paper from the water and shake lightly. After about a minute, 1, 2, 3, or 4 red squares form, depending on the hardness of the water. Each square corresponds to one level.



Setting water hardness

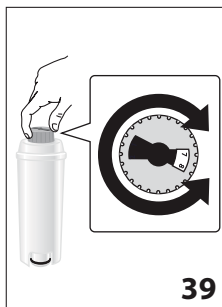
1. Press the  icon (B2) to enter the menu;
2. Press  or  (fig. 5) and select "Water hardness".
3. Confirm the selection by pressing the  icon (fig. 6).
4. Press  or  repeatedly to set the level as measured by the indicator paper (see previous section).
5. Press the  icon to confirm the setting.
6. Press the  icon to exit the menu.

The machine is now reprogrammed with the new water hardness setting.

WATER SOFTENER FILTER (*CERTAIN MODELS ONLY)

Certain models are fitted with a water softener filter (C4). If this is not the case with your model, you are recommended to purchase one from De'Longhi Customer Services. To use the filter correctly, follow the instructions below.

Installing the filter



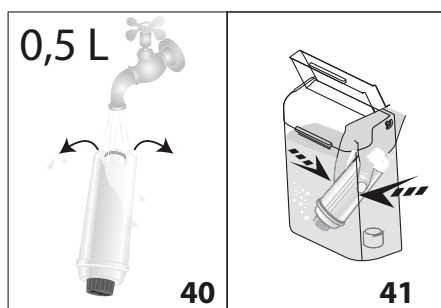
1. Remove the filter (C4) from the packaging.
2. Turn the date indicator disk (see fig. 39) until the next two months of use are displayed.

Please note

The filter lasts about two months if the appliance is used normally. If the coffee machine

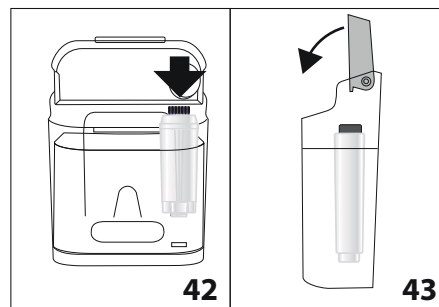
is left unused with the filter installed, it will last a maximum of three weeks.

3. To activate the filter, run tap water through the hole in the filter as shown in the figure until water comes out of the openings at the side for more than a minute (fig. 40).



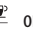
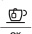
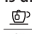
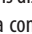


4. Extract the tank from the appliance and fill with water.

5. Insert the filter in the water tank and immerse it completely for about ten seconds, sloping it and pressing it lightly to enable the air bubbles to escape (fig. 41).
6. Insert the filter in the filter housing (fig. 42) and press as far as it will go.
7. Close the tank with the lid (fig. 43), then replace the tank in the machine.



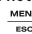

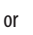
When you install the filter, you must notify the appliance of its presence.

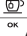
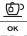

8. Press the  icon (B2) to enter the menu;
9. Press  or  (fig. 5) until "Install filter" is displayed.
10. Press the  icon (fig. 6).
11. "Enable?" is displayed.
12. Press the  icon to confirm the selection. "HOT WATER Press OK" is displayed.
13. Position a container under the hot water spout (min. capacity: 500 ml) (fig. 7).
14. Press the  icon to confirm the selection. The appliance begins hot water delivery and the message "Please wait" is displayed.
15. After the flow of hot water stops, the appliance automatically resets to "Ready for coffee" status.

The filter is now active and you can use the coffee machine.

Replacing the filter

When "REPLACE FILTER" is displayed, after two months (see date indicator) or when the appliance has not been used for 3 weeks, you should replace the filter:




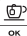


1. Extract the tank (A18) and exhausted filter (C4);
2. Take the new filter out of its packet and proceed as illustrated in points 2, 3, 4, 5, 6 and 7 in the previous section.
3. Position a container with a minimum capacity of 500ml under the hot water spout.
4. Press the  icon (B2) to enter the menu;
5. Press  or  (fig. 5) until "Replace filter" is displayed.

6. Press the  icon (fig. 6);
7. The message "Confirm?" is now displayed;
8. Press the  icon to confirm the selection;
9. "HOT WATER Press OK" is displayed;
10. Press the  icon to confirm the selection. The appliance begins hot water delivery and the message "Please wait" is displayed;
11. After the flow of hot water stops, the appliance automatically resets to "Ready for coffee" status.

The new filter is now active and you can use the coffee machine.

Removing the filter

If you want to use the appliance without the filter, you must remove it and notify the appliance of its removal. Proceed as follows:

1. Remove the tank, remove the filter and put the tank back in the appliance;
2. Press the  (B2) icon to enter the menu;
3. Press  or  (fig. 5) until "Install filter Enable" is displayed;
4. Press the  icon (fig. 6);
5. "Disable?" is displayed;
6. Press the  icon to confirm and the  icon to exit the menu.

TECHNICAL DATA

Voltage:	220-240 V~ 50/60 Hz max. 10A
Absorbed power:	1450W
Pressure:	1,5MPa (15 bar)
Max. water tank capacity:	1,4 l
Size: LxDxH:	195x480x340 mm
Cord length:	1660 mm
Weight:	9,7 kg
Max. beans container capacity:	150 g



The appliance complies with the following EC directives:

- Low Voltage Directive 2006/95/EC and subsequent amendments;
- EMC Directive 2004/108/EC and subsequent amendments;
- European Standby Regulation 1275/2008
- Materials and accessories coming into contact with food conform to EEC regulation 1935/2004.



DISPOSAL



In compliance with European directive 2002/96/EC, the appliance must not be disposed of with household waste, but taken to an authorised waste separation and recycling centre.

DISPLAYED MESSAGES


DISPLAYED MESSAGE	POSSIBLE CAUSE	SOLUTION
FILL TANK	Insufficient water in the tank (A18).	Fill the tank with water and/or insert it correctly, pushing it as far as it will go until it clicks into place.
EMPTY GROUNDS CONTAINER	The grounds container (A13) is full.	Empty the grounds container and drip tray, clean and replace. Important: when removing the drip tray, the grounds container MUST be emptied, even if it contains few grounds. If this is not done, when you make the next coffees, the grounds container may fill up more than expected and clog the machine.
INSERADD PRE-GROUND COFFEE	After cleaning, the grounds container has not been replaced (A13).	Remove the drip tray and insert the grounds container.
ADD PRE-GROUND COFFEE	With the "pre-ground coffee" function selected, pre-ground coffee has not been poured into the funnel (A4).	Place pre-ground coffee in the funnel or deselect the "pre-ground" function (fig. 16).

GROUND TOO FINE ADJUST MILL	The grinding is too fine and the coffee is delivered too slowly or not at all.	Repeat coffee delivery and turn the grinding adjustment dial (fig. 13) one click clockwise towards "7" while the coffee mill is in operation. If after making at least 2 coffees delivery is still too slow, repeat the correction procedure, turning the grinding adjustment dial another click until delivery is correct (see the section: "Adjusting the coffee mill on page 13). If the problem persists, make sure the water tank is fully inserted.
	If the water softener filter is present, an air bubble may have been released inside the circuit, obstructing delivery.	Insert the hot water spout (C3) in the appliance and deliver a little water until the flow becomes regular.
DESCALE	The machine must be descaled.	The descaling procedure described in the section "Descaling" needs to be performed as soon as possible (page 18).
REDUCE COFFEE AMOUNT	Too much coffee has been used.	Select a milder taste by pressing the  icon (fig. 11) or reduce the quantity of pre-ground coffee.
FILL BEANS CONTAINER	The coffee beans have run out.	Fill the beans container (fig. 12).
	The pre-ground coffee funnel (A4) is clogged.	Empty the funnel with the help of a brush as described in the section "Cleaning the pre-ground coffee funnel" (page 17).
INSERT INFUSER ASSEMBLY	The infuser has not been replaced after cleaning (A17).	Insert the infuser as described in the paragraph "Cleaning the infuser" (page 17).
GENERAL ALARM	The inside of the appliance is very dirty.	Clean the inside of the appliance thoroughly, as described in the section "Cleaning" (page 16). If the message is still displayed after cleaning, contact a service centre.
EMPTY CIRCUIT FILL CIRCUIT HOT WATER Press OK	The water circuit is empty	Press  (B1) to deliver water from the spout (C3) until it flows out normally. If the problem persists, make sure the water tank is fully inserted.
REPLACE FILTER	The water softener filter is exhausted.	Replace the filter or remove it as described in the section "Water softener filter" (page 20).
SET DIAL TO CLEAN	Milk has been delivered recently and the tubes inside the milk container must be cleaned.	Turn the froth adjustment dial to CLEAN (fig. 23).
INSERT WATER SPOUT	The water spout is not inserted or is inserted incorrectly.	Insert the water spout (C3) as far as it will go.
INSERT MILK CONTAINER	The milk container is not inserted correctly.	Insert the milk container as far as it will go.

TROUBLESHOOTING

Below is a list of some of the possible malfunctions.

If the problem cannot be resolved as described, contact Customer Services.

PROBLEM	POSSIBLE CAUSE	SOLUTION
The coffee is not hot.	The cups were not preheated.	Warm the cups by rinsing them with hot water (Please note: you can use the hot water function).
	The infuser has cooled down because 2/3 minutes have elapsed since the last coffee was made.	Before making the coffee, heat the infuser by rinsing using the rinse function (page 10).
	A low coffee temperature is set.	Set a higher coffee temperature in the menu (page 12).
The coffee is weak or not creamy enough.	The coffee is ground too coarsely.	Turn the grinding adjustment dial one click anticlockwise towards "1" while the coffee mill is in operation (fig. 11). Continue one click at a time until coffee delivery is satisfactory. The effect is only visible after delivering 2 coffees (see the section: "Adjusting the coffee mill" on page 13).
	The coffee is unsuitable.	Use pre-ground coffee for espresso machines.
The coffee is delivered too slowly or a drop at a time.	The coffee is ground too finely.	Turn the grinding adjustment dial one click clockwise towards "7" while the coffee mill is in operation (fig. 11). Continue one click at a time until coffee delivery is satisfactory. The effect is only visible after delivering 2 coffees (see the section: "Adjusting the coffee mill" on page 13).
Coffee does not come out of one or both of the spouts.	The spouts are blocked.	Clean the spouts with a toothpick (fig. 29).
The appliance does not come on	The connector is not inserted correctly.	Insert the connector as far as it will go in the socket at the back of the appliance (fig. 1).
	It is not plugged into the mains socket.	Plug into the mains socket.
	The main switch (A14) is not turned on.	Press the main switch (fig. 2).
The infuser cannot be extracted	The appliance has not been turned off correctly	Turn the appliance off by pressing the  (button (page 10).
The milk does not come out of the milk spout.	The milk container lid is dirty.	Clean the milk container lid as described in the section "Cleaning the milk container" (page 18).

The milk contains large bubbles and squirts out of the milk spout or there is little froth.	The milk is not cold enough or is not semi-skimmed.	Use skimmed or semi-skimmed milk at refrigerator temperature (about 5° C). If the result is not as you wished, try changing brand of milk.
	The froth adjustment dial is incorrectly adjusted.	Adjust following the instructions in the section "Making cappuccinos and milk based coffees" (page 15).
	The milk container lid or froth adjustment dial are dirty	Clean the milk container lid and control knob as described in the section "Cleaning the milk container" (page 18).
	The hot water/steam connection nozzle is dirty	Clean the connection nozzle as described in the section "Cleaning the hot water/steam connection nozzle" (page 18).

ELECTRICAL REQUIREMENTS

Before using this appliance ensure that the voltage indicated on the product corresponds with the main voltage in your home, if you are in any doubt about your supply contact your local electricity company.

The flexible mains lead is supplied connected to a B.S. 1363 fused plug having a fuse of 13 amp capacity.

Should this plug not fit the socket outlets in your home, it should be cut off and replaced with a suitable plug, following the procedure outlined below.

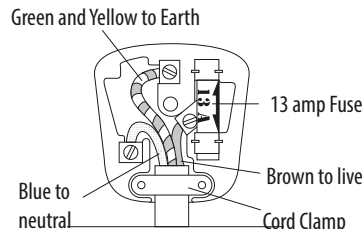
Note: Such a plug cannot be used for any other appliance and should therefore be properly disposed of and not left where children might find it and plug it into a supply socket - with the obvious consequent danger.

Please note: We recommend the use of good quality plugs and wall sockets that can be switched off when the machine is not in use.

IMPORTANT: The wires in the mains lead fitted to this appliance are coloured in accordance with the following code:

GREEN AND YELLOW
BLUE
BROWN

EARTH
NEUTRAL
LIVE



As the colours of the wires in the mains lead of this appliance may not correspond with the coloured markings identifying the terminals in your plug, proceed as follows:

- The wire which is coloured green and yellow must be connected to the terminal in the plug which is marked with the letter E or by the earth symbol \perp or coloured green or green and yellow.
- The wire which is coloured blue must be connected to the terminal which is marked with the letter N or coloured black.
- The wire which is coloured brown must be connected to the terminal which is marked with the letter L or coloured red.

When wiring the plug, ensure that all strands of wire are securely retained in each terminal. Do not forget to tighten the mains lead clamp on the plug. If your electricity supply point has only two pin socket outlets, or if you are in doubt, consult a qualified electrician.

Should the mains lead ever require replacement, it is essential that this operation be carried out by a qualified electrician and should only be replaced with a flexible cord of the same size.

After replacement of a fuse in the plug, the fuse cover must be refitted. If the fuse cover is lost, the plug must not be used until a replacement cover is obtained. The colour of the correct replacement fuse cover is that of the coloured insert in the base of the fuse recess or elsewhere on the plug. Always state this colour when ordering a replacement fuse cover.

Only 13amp replacement fuses which are asta approved to B.S. 1362 should be fitted.

This appliance conforms to the Norms EN 55014 regarding the suppression of radio interference.

Warning - this appliance must be earthed