



UniFi VIDEO[®]

High-Definition IP Surveillance Cameras

Camera Models: UVC-G3-AF, UVC-G3-DOME,
 UVC-G3-MICRO, UVC-G3-PRO
 NVR Model: UVC-NVR-2TB

Scalable Day and Night Surveillance

Advanced Hardware and Optics for 1080p Full HD Video

Powerful Features and Analytic Capabilities



UniFi VIDEO®

The UniFi® Video Cameras G3 represent the next generation of cameras designed for use in the UniFi Video surveillance management system. These cameras offer 1080p Full HD resolution for day or night use and are integrated with the UniFi Video software for powerful and flexible, integrated IP video management.

The cameras are easy to operate and manage using the UniFi Video® software, which is pre-installed on the optional UniFi NVR appliance, or can be downloaded free of charge.



Cameras

Model: UVC-G3-AF

The UniFi Video Camera G3 features clear 1080p video resolution. The ball-joint mount offers flexible 3-axis adjustment and can be mounted indoors or outdoors. The camera has infrared LEDs with an automatic IR cut filter for day and night surveillance. Available as a single- or 5-pack.

- 1080p Full HD, 30 FPS
- EFL 3.6 mm, $f/1.8$
- Outdoor Weather Resistant
- 802.3af PoE or 24V Passive PoE
- Built-in Microphone
- Wall, Ceiling, or Pole Mount
- High-Power IR Range Extender Accessory (Sold Separately)



Model: UVC-G3-PRO

The UniFi Video Camera G3 Pro features a powered zoom lens and crisp 1080p video performance with infrared capability. The camera's versatile 3-axis mount enables indoor or outdoor installation of the camera. The camera has infrared LEDs with an automatic IR cut filter for day and night surveillance. Available as a single pack.

- 1080p Full HD, 30 FPS
- EFL 3-9 mm, $f/1.2$ to $f/2.1$
- Wide-Angle/Zoom Lens
- Outdoor Weather Resistant
- Enhanced Low-Light Performance
- Integrated High-Power Infrared LEDs
- 802.3af/802.3at PoE
- Built-in Microphone
- Wall, Ceiling, or Pole Mount



Model: UVC-G3-DOME

The UniFi Video Camera G3 Dome features a wide-angle lens and 1080p video performance for expanded surveillance coverage. The new surface-mount design provides options for wall or ceiling installations. The infrared LEDs and an automatic IR cut filter provide day and night monitoring. Available as a single- or 5-pack.

- 1080p Full HD, 30 FPS
- EFL 2.8 mm, $f/2.0$
- Wide-Angle Lens
- 802.3af PoE or 24V Passive PoE
- Built-in Microphone
- Wall or Ceiling Mount



Model: UVC-G3-MICRO

The UniFi Video Camera G3 Micro features a wide angle lens and 1080p video resolution. Multiple mounting options allow the camera to be installed almost anywhere indoors for permanent or temporary surveillance. The infrared LEDs and mechanical IR cut filter enable uninterrupted surveillance. The built-in microphone and speaker enable two-way audio communication. Available as a single- or 5-pack.

- 1080p Full HD, 30 FPS
- EFL 2.7 mm, $f/2.2$
- Dual-Band Wi-Fi
- 24V Passive PoE
- Mic and Speaker for Two-Way Audio
- Permanent Mount: Wall or Ceiling
- Temporary Mount: Magnetic or Table Stand



Example of Wall-Mounted UVC-G3-AF



Example of Pole-Mounted UVC-G3-AF

Accessories

UniFi VIDEO®

Dedicated Hardware NVR with UniFi Video® Software

Model: UVC-NVR-2TB

The UniFi NVR is a plug-and-play NVR appliance with low power consumption. The UniFi Video software is pre-installed for quick and easy deployment. No additional software is required. Plug the UniFi NVR into the network, go through the configuration wizard, and it is set up and ready to go.

The UniFi NVR has a built-in 2 TB hard drive. This equates to approximately 4800 recording hours at 480p resolution or 1600 recording hours at 720p resolution (numbers can vary depending on the frame rate).



IR Range Extender

Model: UVC-G3-LED

The IR Range Extender is an accessory that enhances the night vision range of the UVC-G3-AF camera.

- Enhances Night Vision Recordings
- Extends IR Range up to 25 m (82 ft)
- Six High-Intensity Infrared LEDs
- Powered and Controlled by the UVC-G3-AF

UniFi® | SWITCH

Managed Gigabit PoE Switch

Models:
 US-8, US-8-60W, US-8-150W
 US-16-150W
 US-24-250W, US-24-500W
 US-48-500W, US-48-750W

Connect and power all of your UniFi Video Cameras with a UniFi PoE Switch. The UniFi PoE Switch is a reliable enterprise switch featuring configurable 802.3af/at PoE+.

- Up to 48 Ethernet Ports
- Up to 10G SFP+ Connectivity
- Non-Blocking Line Rate Performance
- Enterprise-Class Reliability





Software

The UniFi Video software is pre-installed on the UniFi NVR for quick and easy deployment. The UniFi Video software can also be downloaded and installed on a Windows or Linux-based system.

Features

Feature-Packed User Interface Accessible from a web browser, the UniFi Video interface was designed to be easy to use yet packed with advanced features. The UniFi Video interface is incredibly intuitive and loaded with powerful features such as detailed statistical reporting, multiple views, versatile camera settings, advanced analytics, and customizable event recordings.

Plug and Play Installation Automatic camera detection in the UniFi Video software makes it easy to install and deploy cameras. UniFi Video Camera settings are integrated into the UniFi Video software. Configure camera settings, reboot the camera, or upgrade the firmware from the UniFi Video interface.

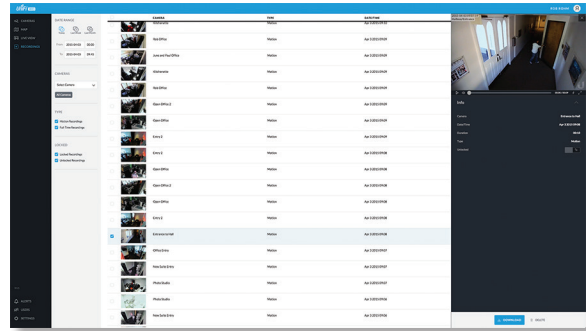
Camera-Based Motion Detection The UniFi Video cameras handle motion detection instead of the server, relieving the workload on the server and ensuring that compression and noise won't affect motion detection.

Additional Live Views Playlists can be created with a configurable live camera feed rotation. Define the cameras you want included in the playlist and how long you want them to appear on the screen before moving on to the next live feed.

Disk Management Features UniFi Video has automatic recording management to free up disk space. User-definable disk space and date-based auto purge allow users to keep a set amount of free disk space or automatically delete recordings after a certain number of days. Another storage feature is the ability to map external USB or network storage drives.

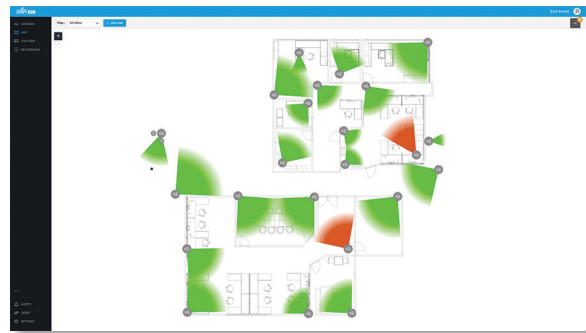
Cost-Effective Solution Shattering conventional industry thinking, Ubiquiti offers UniFi Video's powerful IP surveillance software at no additional cost. No huge upfront costs, no monthly subscription fees.

Mobile App UniFi Video may be accessed from iOS and Android™ using the *UniFi Video* mobile app.



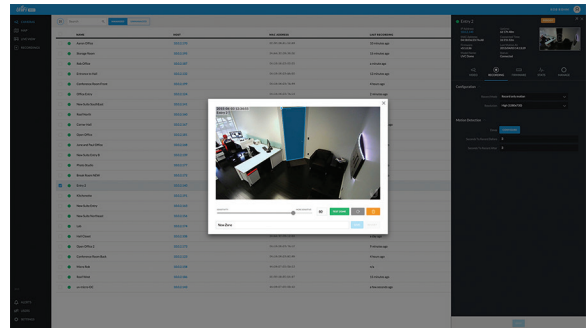
Event Recordings

UniFi Video software provides a variety of options and settings to customize what your cameras record.



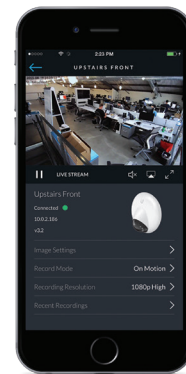
Maps

Upload a map of your location(s) or use Google Maps to represent the areas where your cameras are located.



Powerful Analytic Capabilities

Customize your own motion detection zones. You can place several zones and set their alarm sensitivity levels as high or low as the situation demands.





Specifications

| UVC-G3-AF | |
|---------------------------|--|
| Dimensions | Ø 75 x 140 mm (Ø 2.95 x 5.51") |
| Weight | 300 g (10.58 oz) |
| Enclosure | Injection-Molded Polycarbonate and Die-Cast Aluminum |
| Networking Interface | (1) 10/100 Ethernet Port |
| Sensor | 1/3" 4-Megapixel HDR Sensor |
| Lens | EFL 3.6 mm, f/1.8 |
| Night Mode | IR LEDs with Mechanical IR Cut Filter |
| Microphone | Yes |
| Button | Factory Reset Button |
| Power Method | 802.3af PoE or 24V Passive PoE |
| Power Supply | 802.3af PoE Switch |
| Maximum Power Consumption | |
| Standalone | 4W |
| With Optional IR Extender | 9W |
| Mounting | Wall/Ceiling/Pole |
| Operating Temperature | -30 to 70° C (-22 to 158° F) |
| Operating Humidity | 20 - 90% Noncondensing |

| Video | |
|--------------------|--|
| Video Compression | H.264 |
| Resolution | 1080p Full HD (1920x1080) |
| Maximum Frame Rate | 30 FPS |
| Image Settings | Brightness, Contrast, Sharpness, Saturation, Noise Reduction, 50/60 Hz |

| General | |
|---------------------------------|--|
| Viewing Angle | |
| Before Lens Correction | 85° (H), 44.8° (V), 98.1° (D) |
| After Lens Correction | 72° (H), 42.9° (V), 80.4° (D) |
| Supported UniFi Video Version | UniFi Video 3.8 (or Newer) |
| UniFi Video System Requirements | 64-bit Microsoft Windows 10/8/7, Ubuntu 14.04 or 16.04, or Debian 7.0 System with an Intel or Compatible 1.86 GHz (or Above) Processor and a Minimum of 4 GB RAM |



Specifications



| UVC-G3-PRO | |
|---------------------------|---|
| Dimensions | Ø 86 x 153 mm (Ø 3.39 x 6.02") |
| Weight | 700 g (1.5 lb) |
| Networking Interface | (1) 10/100 Ethernet Port |
| Sensor | Sony IMX290, 1/2.8" |
| Lens | 3X Powered Zoom Lens, 3-9 mm, f/1.2 - f/2.1 |
| Night Mode | IR LED Illumination and IR Cut Filter |
| Microphone | Yes |
| Button | Factory Reset Button |
| Power Method | 802.3af/802.3at PoE |
| Power Supply | 802.3af/802.3at PoE Switch |
| Maximum Power Consumption | 12.5W |
| Mounting | Wall/Ceiling/Pole |
| Operating Temperature | -20 to 50° C (-4 to 122° F) |
| Operating Humidity | 0 - 90% Noncondensing |

| Video | |
|--------------------|--|
| Video Compression | H.264 |
| Resolution | 1080p Full HD (1920x1080) |
| Maximum Frame Rate | 30 FPS |
| Image Settings | Flip, Brightness, Contrast, 50/60 Hz Flicker Reduction, WDR, Hue, Sharpness, Saturation, Noise Reduction |

| General | |
|---------------------------------|--|
| Viewing Angle | Wide: 93° (H), 68.4° (V), 118.9° (D) Tele: 31.7° (H), 23.8° (V), 39.6° (D) |
| Supported UniFi Video Version | UniFi Video 3.9 (or Newer) |
| UniFi Video System Requirements | 64-bit Microsoft Windows 10/8/7, Ubuntu 14.04 or 16.04, or Debian 7.0 System with an Intel or Compatible 1.86 GHz (or Above) Processor and a Minimum of 4 GB RAM |



Specifications

| UVC-G3-DOME | |
|---------------------------|--|
| Dimensions | Ø 132 x 60 mm (Ø 5.20 x 2.36") |
| Weight | 260 g (9.17 oz) |
| Networking Interface | (1) 10/100 Ethernet Port |
| Sensor | 1/3" 4-Megapixel HDR Sensor |
| Lens | EFL 2.8 mm, f/2.0 |
| Night Mode | IR LEDs with Mechanical IR Cut Filter |
| Microphone | Yes |
| Button | Factory Reset Button |
| Power Method | 802.3af PoE or 24V Passive PoE |
| Power Supply | 802.3af PoE Switch or 24V, 0.5A PoE Adapter (Included with Single-Pack) |
| Maximum Power Consumption | 4W |
| Mounting | Wall/Ceiling |
| Operating Temperature | -30 to 70° C (-22 to 158° F) |
| Operating Humidity | 20 - 90% Noncondensing |

| Video | |
|--------------------|--|
| Video Compression | H.264 |
| Resolution | 1080p Full HD (1920x1080) |
| Maximum Frame Rate | 30 FPS |
| Image Settings | Brightness, Contrast, Sharpness, Saturation, Noise Reduction, 50/60 Hz |

| General | |
|--|--|
| Viewing Angle Before Lens Correction After Lens Correction | 100.4° (H), 59.1° (V), 117.3° (D) 87.8° (H), 55.4° (V), 96.4° (D) |
| Supported UniFi Video Version | UniFi Video 3.2 (or Newer) |
| UniFi Video System Requirements | 64-bit Microsoft Windows 10/8/7, Ubuntu 14.04 or 16.04, or Debian 7.0 System with an Intel or Compatible 1.86 GHz (or Above) Processor and a Minimum of 4 GB RAM |



Specifications

| UVC-G3-MICRO | |
|----------------------------|---|
| Dimensions Body Base | Ø 51.38 x 41.97 mm (Ø 2.02 x 1.65") Ø 36 x 17.3 mm (Ø 1.42 x 0.68") |
| Weight Body Base | 65 g (2.29 oz) 31 g (1.09 oz) |
| Networking Interface | 802.11 a/b/g/n, 2.4 GHz/5 GHz Dual-Band Wi-Fi |
| Sensor | 1/3" 4-Megapixel Sensor with WDR |
| Lens | EFL 2.7 mm, f/2.2 |
| Night Mode | IR LEDs with Removable IR Cut Filter, Built-in Light Sensor |
| Microphone | Yes (with Microphone Volume Control) |
| Button | Factory Reset Button |
| Power Method | 24V Passive PoE |
| Power Supply | AC Adapter (Included), or Instant PoE Adapter (Included) and 802.3af PoE Switch |
| Maximum Power Consumption | IR LEDs On: 3.5W IR LEDs Off: 2W |
| Mounting | Magnetic Base/Wall/Table |
| Operating Temperature | 0 to 35° C (32 to 95° F) |
| Operating Humidity | 20 - 90% Noncondensing |

| Video | |
|--------------------|--|
| Video Compression | H.264 |
| Resolution | 1080p Full HD (1920x1080) |
| Maximum Frame Rate | 30 FPS |
| Image Settings | Flip, Brightness, Contrast, AE Mode (50/60 Hz), WDR, Hue, Infrared, Sharpness, Saturation, Noise Reduction |

| General | |
|------------------------------------|--|
| Viewing Angle LDC Off LDC On | 124° (H), 65° (V), 150° (D) 92° (H), 6° (V), 100° (D) |
| Supported UniFi Video Version | UniFi Video 3.8 (or Newer) |
| UniFi Video System Requirements | 64-bit Microsoft Windows 10/8/7, Ubuntu 14.04 or 16.04, or Debian 7.0 System with an Intel or Compatible 1.86 GHz (or Above) Processor and a Minimum of 4 GB RAM |

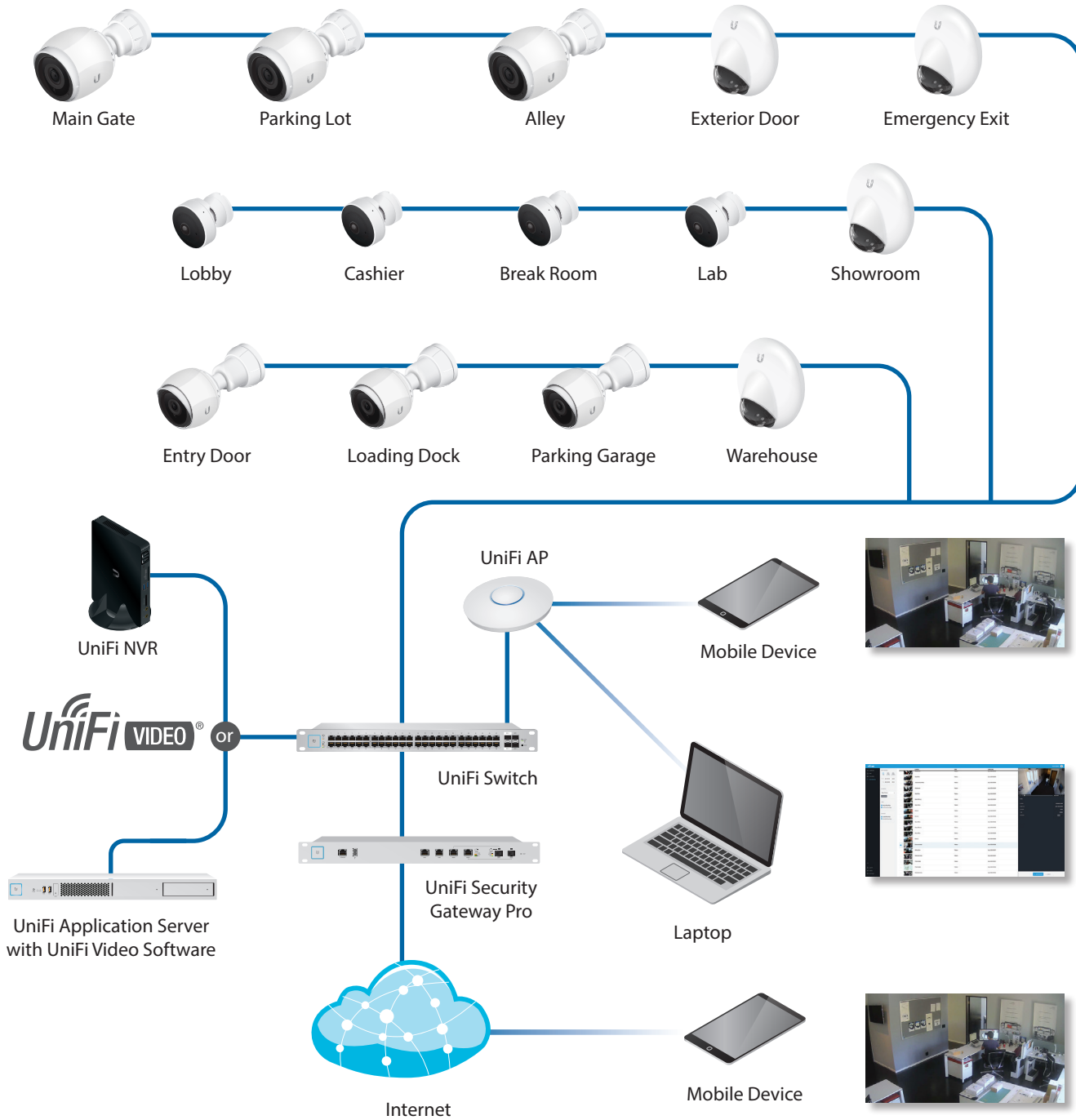


Specifications

| UVC-NVR-2TB | |
|---------------------|---|
| Dimensions | 135 x 190 x 25 mm (5.31 x 7.48 x 0.98") |
| Weight | 483 g (17 oz) |
| Processor | Intel D2550 |
| Memory | 4 GB |
| Hard Drive Capacity | 2 TB |
| Ports | (1) 10/100/1000 Ethernet |
| Power Supply | 65W, 19V, 3.42A |
| Certifications | CE, FCC, IC |

| UniFi Video Software | |
|----------------------|---|
| Software | Browser-Based Interface, Tablets, and Smartphones Supported |
| System Setup | Plug-and-Play Installation, Automatic Camera Detection |
| NVR Camera Support | Recommended for up to 20 UniFi Video Cameras |
| Supported Devices | Operating Systems: Windows, Apple, and Linux Browsers: Chrome, Internet Explorer 10 (or above), Firefox, and Safari Smartphones: iPhone and Android |
| Media Format | MP4 (H.264/AAC) |
| Scheduling | Day/Time/Camera Scheduled Video Recording/Motion Detection/Email Alerts |
| Views | Multiple Camera Live Grid View, Recorded Video Playback, Full Screen, Windowed |

System Example



UVC-G3-AF



UVC-G3-PRO



UVC-G3-DOME



UVC-G3-MICRO



UniFi Switch Compatibility

The UniFi Video Cameras G3 are compatible with the UniFi Switches listed below (✓ indicates compatibility).

| Camera Model | US-8 | US-8-60W | US-8-150W | US-16-150W | US-24-250W | US-24-500W | US-48-500W | US-48-750W |
|---------------|------|----------|-----------|------------|------------|------------|------------|------------|
| UVC-G3-AF | ✓ | ✓ | ✓ | ✓ | ✓ | ✓ | ✓ | ✓ |
| UVC-G3-DOME | ✓ | ✓ | ✓ | ✓ | ✓ | ✓ | ✓ | ✓ |
| UVC-G3-MICRO* | ✓ | ✓ | ✓ | ✓ | ✓ | ✓ | ✓ | ✓ |
| UVC-G3-PRO | ✓ | ✓ | ✓ | ✓ | ✓ | ✓ | ✓ | ✓ |

* Includes Instant 802.3af PoE Converter

Related Product Datasheets



UniFi Switch 8, UniFi Switch 8-60W:

dl.ubnt.com/datasheets/unifi/UniFi_Switch_8_DS.pdf



UniFi PoE Switches:

dl.ubnt.com/datasheets/unifi/UniFi_PoE_Switch.pdf



Specifications are subject to change. Ubiquiti products are sold with a limited warranty described at: www.ubnt.com/support/warranty
 ©2017 Ubiquiti Networks, Inc. All rights reserved. Ubiquiti, Ubiquiti Networks, the Ubiquiti U logo, the Ubiquiti beam logo, UniFi, and UniFi Video are trademarks or registered trademarks of Ubiquiti Networks, Inc. in the United States and in other countries. Apple and the Apple logo are trademarks of Apple Inc., registered in the U.S. and other countries. App Store is a service mark of Apple Inc. Google, Android, Google Play and other marks are trademarks of Google Inc. All other trademarks are the property of their respective owners.



www.ubnt.com