

User's Guide

TRENDNET[®]



2-Port HDMI KVM Switch

TK-215i

Contents

Product Overview	2
Package Contents	2
Features	2
Product Hardware Features.....	3
Application Diagram	3
Installation.....	4
Hardware Installation	4
KVM Switch Operation	4
Toggle Switch	4
Keyboard Hot Key Commands.....	4
KVM Switcher Software	5
For Windows User	5
For Mac User	9
Troubleshooting.....	13

Product Overview



TK-215i

Package Contents

- TK-215i
- Quick Installation Guide
- CD-ROM (Utility & User's Guide)

If any package contents are missing or damaged, please contact the retail store, online retailer, or reseller/distributor that the item was purchased.

Features

TRENDnet's 2-Port HDMI KVM Switch, model TK-215i, controls two computers (with an available HDMI port) with one set of console controls. No driver installation required, simply plug in the integrated cables to share two computers with a fullHD 1080p display. The TK-215i supports HDMI and 3.5 mm analog audio and features an ergonomic computer toggle switch.

Computers

Control up to 2 computers

1080p HD

Supports for full HD 1080p (progressive 1920 x 1080 pixels) with a 60 Hz refresh rate

2-Way Audio

Full audio support through HDMI cable connections with optional 3.5 mm microphone and speaker jacks

Toggle Switch

Use the integrated 1.5 m (5 ft.) cable to position the toggle switch in the most ergonomic location

Console Connectors

Emulation Technology supports advanced USB keyboard and mouse designs

HDMI Display

HDMI 1.3 with HDCP support

Switch Software

Windows® and Mac® based KVM switch software to define hot keys and create auto-scan intervals

Product Hardware Features



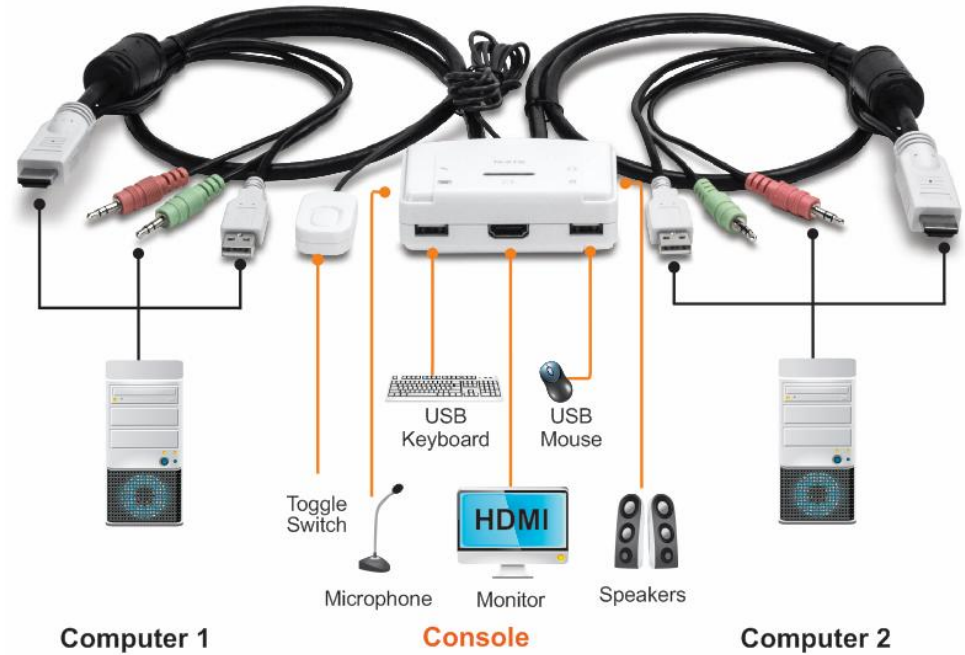
Console Connector

- Toggle Switch
- 3.5mm Microphone Port
- USB Keyboard Port
- HDMI Monitor Port
- USB Mouse Port
- 3.5mm Speaker Port

Computer 1 - 2 Connector

- HDMI Plug
- 3.5mm Microphone Plug
- 3.5mm Speaker Plug
- USB Plug

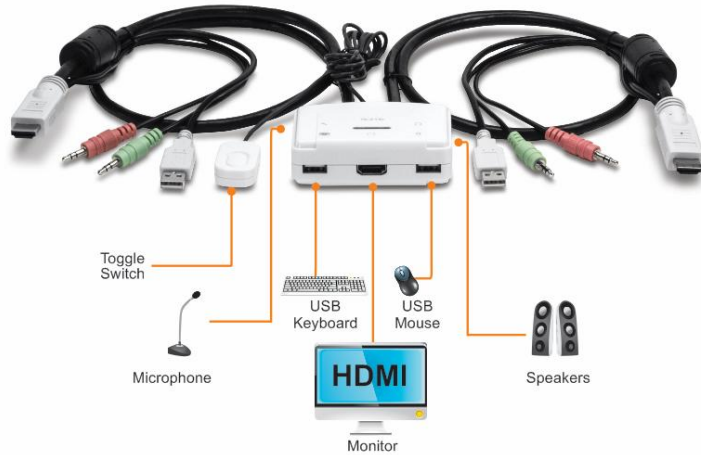
Application Diagram



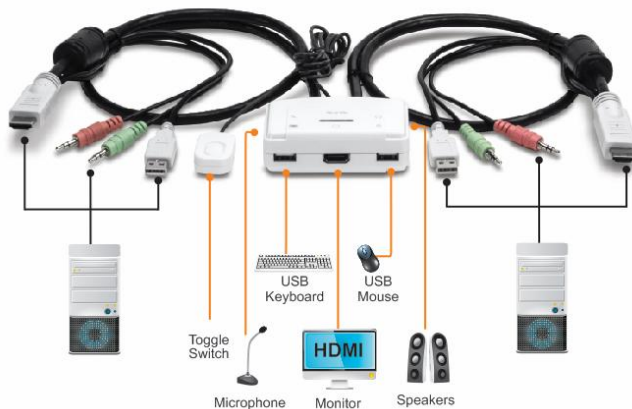
Installation

Hardware Installation

1. Connects the shared USB keyboard, mouse, HDMI monitor, microphone/speakers (optional) to your KVM Switch's Console port.



2. Connects the first set of the USB/HDMI/Microphone/Speaker KVM cable into the 1st computer and connect the other set of the USB/HDMI/Microphone/Speaker KVM cable into the 2nd computer.



Note:

1. The HDMI connection included both video and audio
2. Some computers with USB Interface may require you to manually enable the USB option in the BIOS setting before using any USB device. If your USB interface does not work, please check the USB Status option in BOS.

KVM Switch Operation

There are three ways to select the computers.

1. One-touch push button toggle switch
2. Keyboard hot key commands
3. KVM Switcher Software (see next section for detail)

Toggle Switch

The one touch toggle switch allows you to switch to another computer by click the button.

Keyboard Hot Key Commands

Hot Key Commands = Ctrl + Alt + [command key]

Universal Hot Key Commands = Scroll Lock + Scroll Lock

Note:

1. Each keystroke within a hot key sequence should be pressed within 2 seconds. Otherwise, the hot key sequence will be exit.

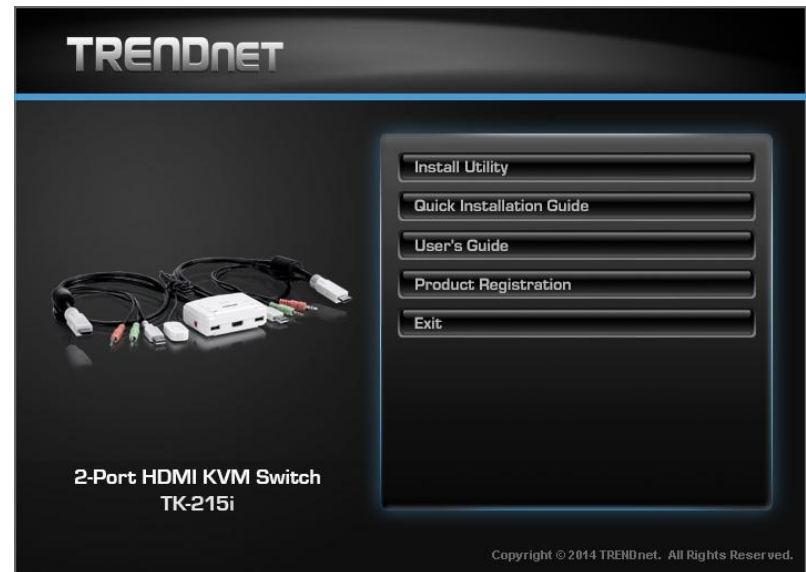
2. The default Hot Key Sequence is Ctrl + Alt + 1 or 2. You can define your own hot key via KVM Switcher Software.
3. The Universal Hot Key command is not working with Mac operating system.
4. Both the universal hotkey, Scroll Lock + Scroll Lock and the user-definable hotkey, Ctrl + Alt + [command key] WILL NOT work on any empty port which does not have computer connected. To force the KVM switch to switch to an empty port, please press the toggle switch instead.
5. All the hot keys are only functional after your computers are booting into the OS. If you want to switch computer in the BIOS/pre-boot stage, please press the toggle switch button.

KVM Switcher Software

Note: The TK-215i KVM Switch does not require any drivers or software. The KVM Switcher Utility is a convenience way to operate the KVM Switch.

For Windows User

1. Insert the Installation CD-ROM into your computer's CD-ROM drive to initiate the Auto-Run program, and the menu screen will appear as below.



- Click **Install Utility** from the Auto-Run menu screen. The welcome screen appears as below. Click **Next >**.



- When completed, click **Finish**.

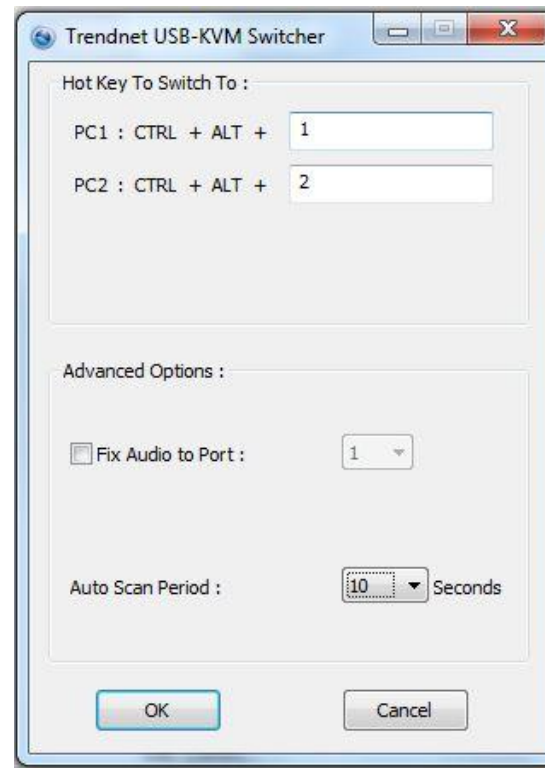


- Right-click on the KVM Switching icon on the desktop.

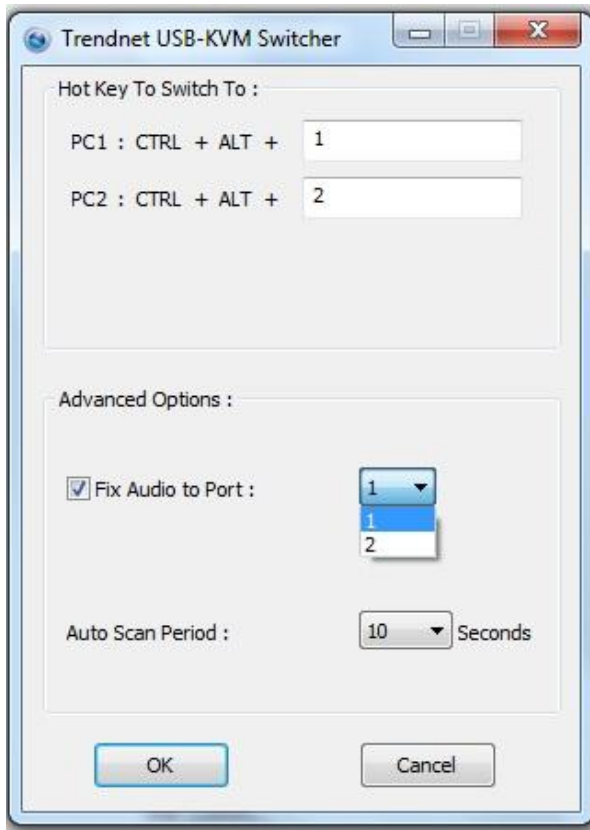


- If you would like to modify the hot key, type in a character. You can enter any number, letter or symbol. Control keys such as Alt, Ctrl, Shift, CAPS LOCK, Tab, Esc, and Num Lock and function keys cannot be used.

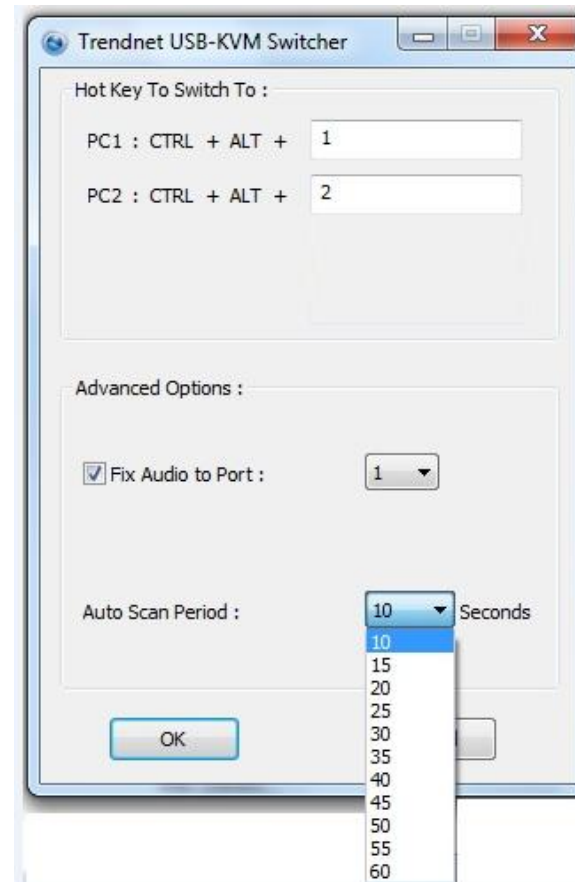
Function Key Example: CTRL + ALT + A



- Click on the check box of the **Fix Audio to Port** and then select the desired computer to fix the speaker/microphone channel for the selected computer. Once this option is checked, the speaker/microphone channel will be fixed and become non-selectable. Note: Fixed Audio port features only supports for analog audio. The HDMI audio always stay with the current computer.



- Select a desired Auto Scan period. The period is the waiting time that your KVM Switch will switch to next computer.



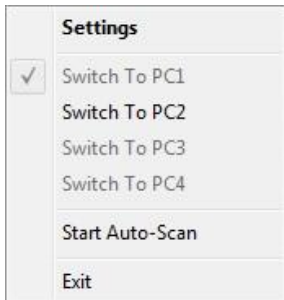
- Click **OK** to save the changes.

- Right click on the KVM Switcher software icon in the system tray. If your computer is connected to computer 1 port, the system tray will show an icon with the number 1. If your computer is connected to computer 2, the system tray will show an icon with the number 2.

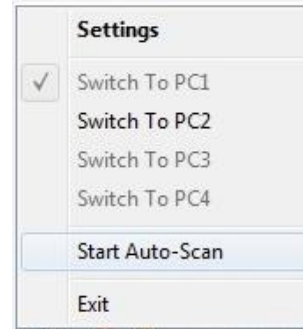


Note: After performing the port switch, you have to wait till the KVM Switch icon shows the target port before you can perform next switching again.

- Select the PC that you would like to switch to. The unconnected port or the active port will be gray-out.



- Click **Start Auto-Scan** to start auto-scan. Click the **Stop Auto-Scan** to stop auto-scan.



For Mac User

1. Insert the Installation CD-ROM into your computer's CD-ROM drive.
2. Double-click TK-215i CD-ROM icon on the desktop



3. Double-click on the Macintosh folder



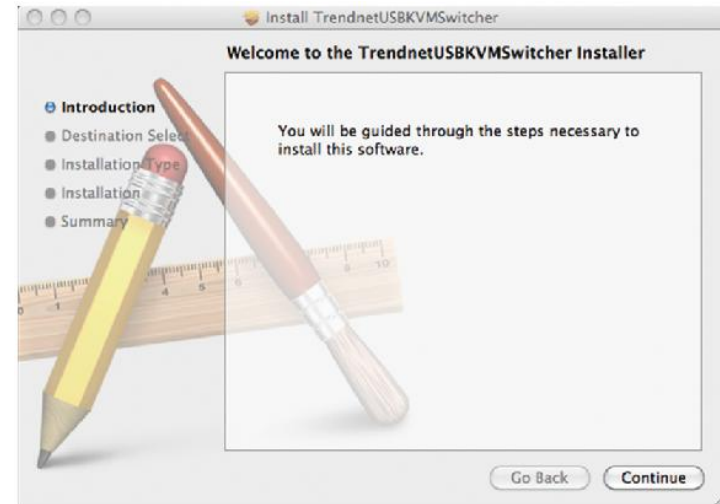
Macintosh

4. Select the **TrendnetUSBKVMSwitcher.pkg**.

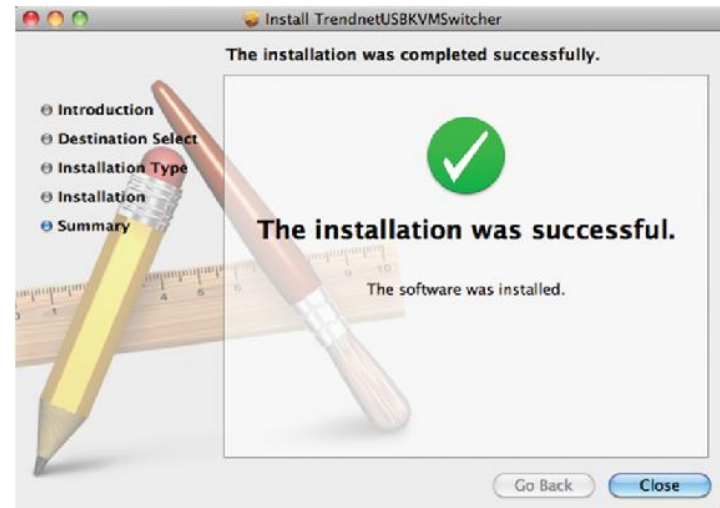


TrendnetUSBKVM
Switcher.pkg

5. Click **Continue**, then following the instruction.



6. Click **Close** to finish the installation



- Double click on the Macintosh HD icon.



- Double click on the Applications icon.



- Click on TrendnetUSB-KVM Switcher.

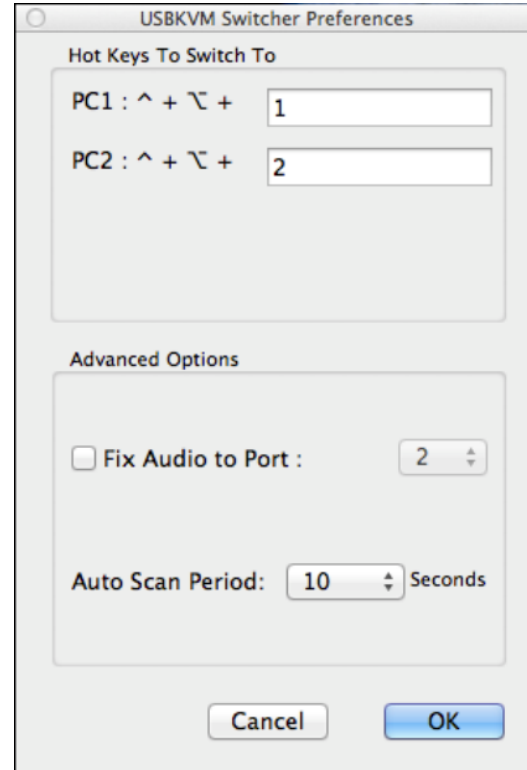


- Double click on the USB-KVM Switcher icon in the dock. If your computer is connected to computer 1 port, the dock will show an icon with the number 1. If your computer is connected to computer 2, the dock will show an icon with the number 2.

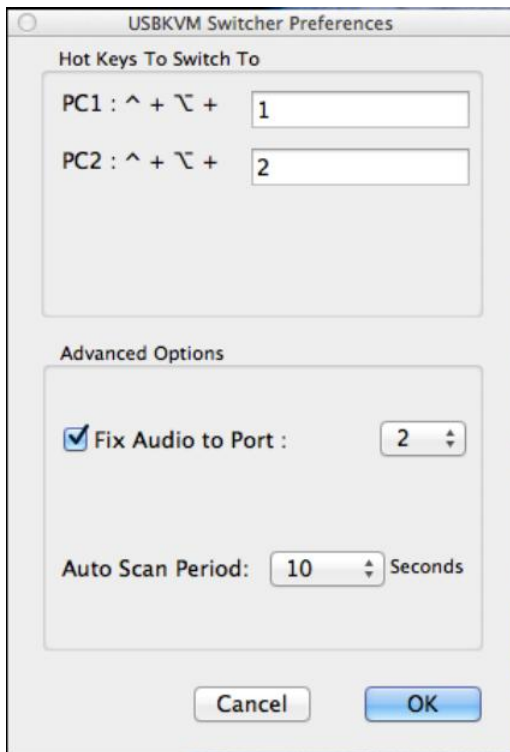


- If you would like to modify the hot key, type in a character. You can enter any number, letter or symbol. Control keys such as Alt, Ctrl, Shift, CAPS LOCK, Tab, Esc, and Num Lock and function keys cannot be used.

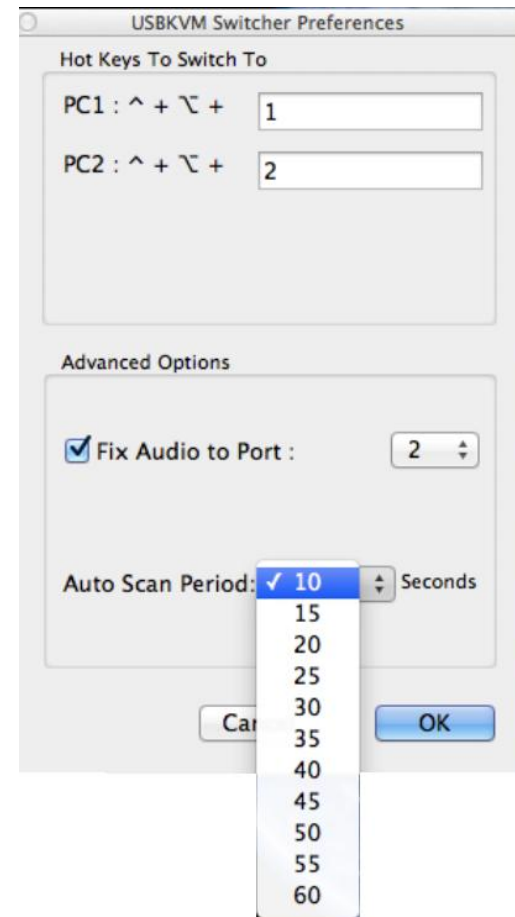
Function Key Example: Command + Option + A.



11. Click on the check box of the **Fix Audio to Port** and then select the desired computer to fix the speaker/microphone channel to the selected computer. Once this option is checked, the speaker/microphone channel will be fixed and become non-selectable. Note: Fixed Audio port features only supports for analog audio. The HDMI audio always stay with the current computer.



12. Select a desired Auto Scan Period. The period is the time that your KVM Switch will wait to switch to next computer.



13. Click **OK** to save the changes.

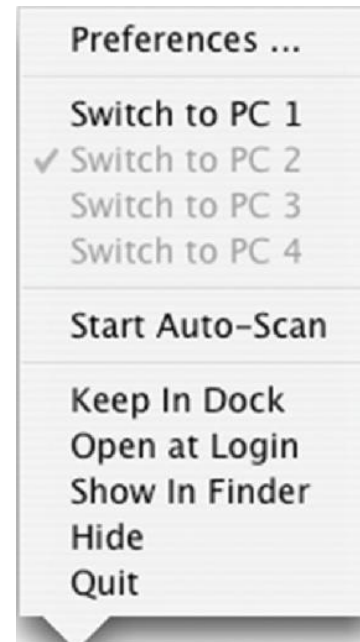
14. Right click on the KVM Switcher Software icon in the dock. If your computer is connected to computer 1 port, the dock will show an icon with the number 1. If your computer is connected to computer 2, the dock will show an icon with the number 2.



15. Select the computer that you would like to switch to.



16. Select the **Start Auto-Scan** to start auto-scan. Click the **Stop Auto-Scan** to stop the auto-scan.



Troubleshooting

1. I have the TK-215i connected properly, but my keyboard and mouse do not work.

- a. Make sure your USB ports are working properly by connecting your mouse and keyboard directly to the USB ports on your computer.
- b. Once you confirm that your computer's USB port is functional, please reboot all computers, and try to use the KVM switch again.

2. Can I connect and disconnect the USB cables while the computers are turned on?

Yes, you can connect or disconnect the USB cable while the computers are turned on, because the USB interface is Plug-and-Play and Hot-Pluggable.

3. Will the KVM switch remember the keyboard setting between computers?

Yes, the KVM switch will remember the keyboard setting when switching between computers. (i.e.: Caps Lock, Num Lock, etc.)

4. How do I switch from one computer to another with the KVM Switch?

Windows User:

Toggle Switch push button, Universal Hot Key Commands or USB KVM Switcher Software.

Mac User:

Toggle Switch push button or USB KVM Switcher Software

Linux User:

Toggle switch push button

5. Can I redirect to specific computer?

No, the binding/unbinding audio function only works with analog audio port. The HDMI audio always stay with the current computer.

Limited Warranty

TRENDnet warrants its products against defects in material and workmanship, under normal use and service, for the following lengths of time from the date of purchase.

TK-215i – 2 Years Limited Warranty

AC/DC Power Adapter, Cooling Fan, and Power Supply carry 1 year warranty.

If a product does not operate as warranted during the applicable warranty period, TRENDnet shall reserve the right, at its expense, to repair or replace the defective product or part and deliver an equivalent product or part to the customer. The repair/replacement unit's warranty continues from the original date of purchase. All products that are replaced become the property of TRENDnet. Replacement products may be new or reconditioned. TRENDnet does not issue refunds or credit. Please contact the point-of-purchase for their return policies.

TRENDnet shall not be responsible for any software, firmware, information, or memory data of customer contained in, stored on, or integrated with any products returned to TRENDnet pursuant to any warranty.

There are no user serviceable parts inside the product. Do not remove or attempt to service the product by any unauthorized service center. This warranty is voided if (i) the product has been modified or repaired by any unauthorized service center, (ii) the product was subject to accident, abuse, or improper use (iii) the product was subject to conditions more severe than those specified in the manual.

Warranty service may be obtained by contacting TRENDnet within the applicable warranty period and providing a copy of the dated proof of the purchase. Upon proper submission of required documentation a Return Material Authorization (RMA) number will be issued. An RMA number is required in order to initiate warranty service support for all TRENDnet products. Products that are sent to TRENDnet for RMA service must have the RMA number marked on the outside of return packages and sent to TRENDnet prepaid, insured and packaged appropriately for safe shipment. Customers shipping from outside of the USA and Canada are responsible for return shipping fees. Customers shipping from outside of the USA are responsible for custom charges, including but not limited to, duty, tax, and other fees.

WARRANTIES EXCLUSIVE: IF THE TRENDNET PRODUCT DOES NOT OPERATE AS WARRANTED ABOVE, THE CUSTOMER'S SOLE REMEDY SHALL BE, AT TRENDNET'S OPTION, REPAIR OR REPLACE. THE FOREGOING WARRANTIES AND REMEDIES ARE EXCLUSIVE AND ARE IN LIEU OF

ALL OTHER WARRANTIES, EXPRESSED OR IMPLIED, EITHER IN FACT OR BY OPERATION OF LAW, STATUTORY OR OTHERWISE, INCLUDING WARRANTIES OF MERCHANTABILITY AND FITNESS FOR A PARTICULAR PURPOSE. TRENDNET NEITHER ASSUMES NOR AUTHORIZES ANY OTHER PERSON TO ASSUME FOR IT ANY OTHER LIABILITY IN CONNECTION WITH THE SALE, INSTALLATION MAINTENANCE OR USE OF TRENDNET'S PRODUCTS.

TRENDNET SHALL NOT BE LIABLE UNDER THIS WARRANTY IF ITS TESTING AND EXAMINATION DISCLOSE THAT THE ALLEGED DEFECT IN THE PRODUCT DOES NOT EXIST OR WAS CAUSED BY CUSTOMER'S OR ANY THIRD PERSON'S MISUSE, NEGLIGENCE, IMPROPER INSTALLATION OR TESTING, UNAUTHORIZED ATTEMPTS TO REPAIR OR MODIFY, OR ANY OTHER CAUSE BEYOND THE RANGE OF THE INTENDED USE, OR BY ACCIDENT, FIRE, LIGHTNING, OR OTHER HAZARD.

LIMITATION OF LIABILITY: TO THE FULL EXTENT ALLOWED BY LAW TRENDNET ALSO EXCLUDES FOR ITSELF AND ITS SUPPLIERS ANY LIABILITY, WHETHER BASED IN CONTRACT OR TORT (INCLUDING NEGLIGENCE), FOR INCIDENTAL, CONSEQUENTIAL, INDIRECT, SPECIAL, OR PUNITIVE DAMAGES OF ANY KIND, OR FOR LOSS OF REVENUE OR PROFITS, LOSS OF BUSINESS, LOSS OF INFORMATION OR DATE, OR OTHER FINANCIAL LOSS ARISING OUT OF OR IN CONNECTION WITH THE SALE, INSTALLATION, MAINTENANCE, USE, PERFORMANCE, FAILURE, OR INTERRUPTION OF THE POSSIBILITY OF SUCH DAMAGES, AND LIMITS ITS LIABILITY TO REPAIR, REPLACEMENT, OR REFUND OF THE PURCHASE PRICE PAID, AT TRENDNET'S OPTION. THIS DISCLAIMER OF LIABILITY FOR DAMAGES WILL NOT BE AFFECTED IF ANY REMEDY PROVIDED HEREIN SHALL FAIL OF ITS ESSENTIAL PURPOSE.

Governing Law: This Limited Warranty shall be governed by the laws of the state of California.

Some TRENDnet products include software code written by third party developers. These codes are subject to the GNU General Public License ("GPL") or GNU Lesser General Public License ("LGPL").

Go to <http://www.trendnet.com/gpl> or <http://www.trendnet.com> Download section and look for the desired TRENDnet product to access to the GPL Code or LGPL Code. These codes are distributed WITHOUT WARRANTY and are subject to the copyrights of the developers. TRENDnet does not provide technical support for these codes. Please go to <http://www.gnu.org/licenses/gpl.txt> or <http://www.gnu.org/licenses/lgpl.txt> for specific terms of each license.

V1.0R /09.03.2014



Product Warranty Registration

Please take a moment to register your product online.
Go to TRENDnet's website at <http://www.trendnet.com/register>

TRENDnet
20675 Manhattan Place
Torrance, CA 90501. USA