



. . . c o n n e c t i n g y o u r b u s i n e s s

LANCOM Content Filter

Professional databased verification of websites

- Category based analyzing of webpages
- Time and profile based configuration
- Extensive statistics
- Category based Overrides for webpages configurable
- 1 or 3 year terms
- additive licenses for 10, 25 or 100 users

Private surfing at the workplace costs the German economy alone an estimated EUR 50 billion per year. A total of 40% of Internet traffic is unrelated to work and, interestingly, almost 70% of all pornographic websites hits occur in the time from 9 am to 5 pm.

Misuse of the Internet at the workplace causes the most security incidents - directly after virus. Many companies do not yet employ URL filters as they are concerned about the working atmosphere, no clear conditions of use have been agreed, or even simply because of low budgets.

The content filter from LANCOM Systems provides companies with a solution that offers clear advantages:

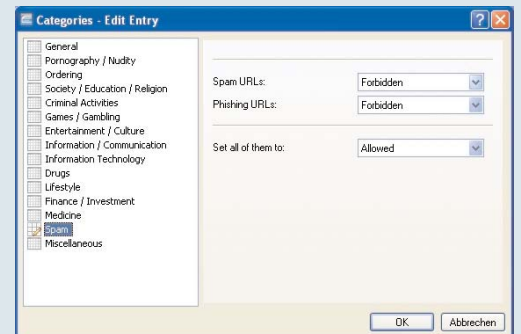
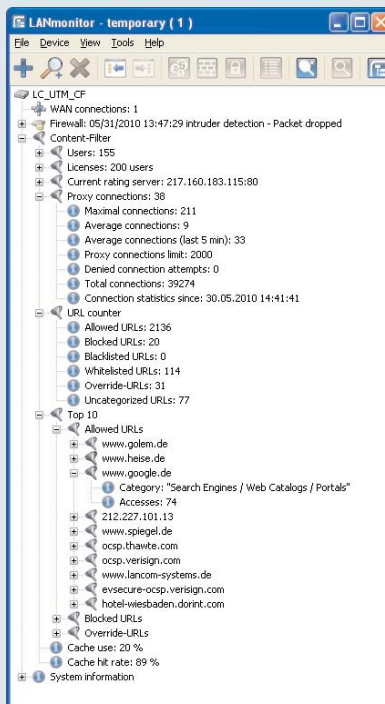
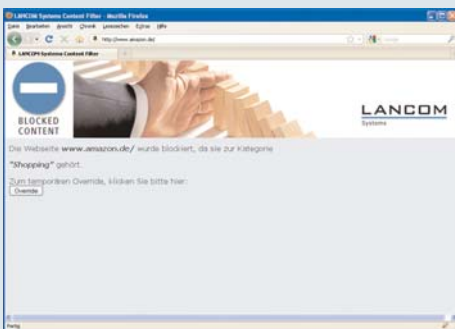
Protection of business integrity through

- Increased employee productivity
- Blockage of undesirable/illegal Internet content
- Minimization of corporate liability risk

Protection of network integrity from

- Inappropriate use of bandwidth and storage capacity
- spy ware, phishing, virus...

Availability note: The LANCOM Content Filter will be available as of release of LCOS Version 8.0. A free 30 days demo license can be generated via web or LANconfig.



LANCOM Content Filter

URL check	Databased online check of websites
Categories	The LANCOM Content Filter supports 58 categories which are divided into 14 subject groups
Licensing	The LANCOM Content Filter works with a on a per-user basis. The LANCOM device determines the number of users by counting the IP addresses that are receiving filtered content.
Override	The LANCOM override grants access to websites even if they are blocked. This enables access to blocked URLs for a limited period of time without having to make changes to the configuration. The LANCOM override can be activated for each category. Overrides can be logged by e-mail, syslog and SNMP.
Userbased block page	It is possible to define user based block pages which can be stored on an external web server.
Local cache	The LANCOM Content Filter has an internal cache as a buffer memory for the category assigned to a URL. The size of the cache depends on the device.
Black-Whitelisting	The LANCOM Content-Filter uses a blacklist and a whitelist for configuring exceptions to the usual categories.
Notifications	At license expiration, errors, activated overrides via E-Mail/Syslog/SNMP
Userbased configuration	The LANCOM Content Filter supports a user based configuration via the firewall module.
Timebased configuration	The LANCOM Content Filter supports time-dependent configurations for the various blocking lists (e.g. working hours vs. free time).
Statistics	The LANCOM Content Filter offers an extensive range of statistics, including Top-10 lists of allowed, blocked and override URLs, counters and category listings in a configurable timeframe.
Snapshot	Configurable snapshot for alle categories in defined timeframes to allow a further analysis of the web usage.
Article number	61590 LANCOM Content Filter +10 user, 1 year option
	61591 LANCOM Content Filter +25 user, 1 year option
	61592 LANCOM Content Filter +100 user, 1 year option
	61593 LANCOM Content Filter +10 user, 3 year option
	61594 LANCOM Content Filter +25 user, 3 year option
	61595 LANCOM Content Filter +100 user, 3 year option

Supported devices

Router model	max. users
LANCOM 1711+ VPN	25
LANCOM 17121+ VPN	25
LANCOM 1751 UMTS	25
LANCOM 1811n Wireless	25
LANCOM 1821+ Wireless ADSL (Annex A und B)	25
LANCOM 1821n Wireless	25
LANCOM 1722 VoIP (Annex A und B)	25
LANCOM 1723 VoIP (Annex A und B)	25
LANCOM 1724 VoIP (Annex A und B)	25
LANCOM 1823 VoIP (Annex A und B)	25
LANCOM 3850 UMTS	25
LANCOM 7111 VPN	100
LANCOM 8011 VPN	100
LANCOM 7100 VPN	200
LANCOM 9100 VPN	200
LANCOM WLC 4006	50
LANCOM WLC 4025	100
LANCOM WLC 4025+	200
LANCOM WLC 4100	200