

<http://www.icybox.de>

ICY BOX®

IB-2217 Series

Manual IB-2217

Trayless Mobile Rack for 2.5" SATA HDD

Handbuch IB-2217

Trägerloser Wechselrahmen für 2,5" SATA Festplatte

Manuel IB-2217

Rack Mobile sans tiroir pour 2,5" SATA HDD

Manual IB-2217

Rack mobile sin bandeja HDD de 2,5"

Manuale IB-2217

Rack mobile senza vassoio per dischi rigidi SATA da 2,5"

Instrukcja IB-2217

Obudów zewnętrznych na dyski SATA 2,5"

Εγχειρίδιο IB-2217

Εξωτερική Θήκη για Οδηγούς Σκληρού Δίσκου SATA 2,5"

Руководство IB-2217

Мобильный SATA контейнер без носителя 2,5" SATA HDD



E Manual	Manual IB-2217 Trayless Mobile Rack for 2.5" SATA HDD 4-5
D Handbuch	Handbuch IB-2217 Trägerloser Wechselrahmen für 2,5" SATA Festplatte 6-7
F Manuel	Manuel IB-2217 Rack Mobile sans tiroir pour 2,5" SATA HDD 8-9
ES Manual	Manual IB-2217 Rack mobile sin bandeja HDD de 2,5" 10-11
IT Manuale	Manuale IB-2217 Rack mobile senza vassoio per dischi rigidi SATA da 2,5" 12-13
PL Podręcznik obsługi	Instrukcja IB-2217 Obudów zewnętrznych na dyski SATA 2,5" 14-15
GR Εγχειρίδιο	Εγχειρίδιο IB-2217 Εξωτερική Θήκη για Οδηγούς Σκληρού Δίσκου SATA 2,5" 16-17
RU Руководство	Руководство IB-2217 Мобильный SATA контейнер без носителя 2,5" SATA HDD 18-19

1. Model – HDD – Host Interface – Colour

Model	HDD	Host Interface	Colour
IB-2217StS	1x 2.5" SATA	1x SATA	black

2. Package Content

1x IB-2217StS, 1x SATA Cable, 1x Power + LED Cable, 4x screw, 1x Manual, 2x keys

3. Key Features

- 2.5" SATA HDD (max 9,5mm high) or SSD in 1x 3.5" bay
- EasySwap® – tool less HDD or SSD installation and exchange
- Hard disk capacity not limited
- SATA host interface 6.0 Gbit/s
- LED for power and HDD access
- Plug & play and hot swap
- Support all operating systems

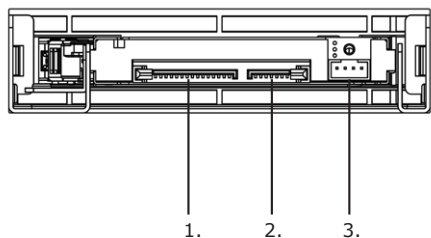
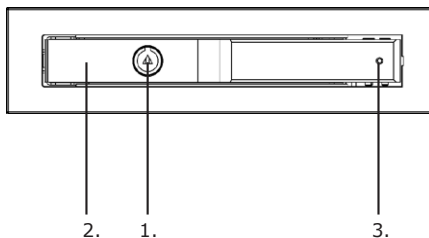
4. Technical Data

- Interface:** 1x 15pin SATA power connector
1x 7pin SATA data connector
- Material:** Stainless Steel/Plastic
- HDD height:** max 9.5 mm

5. Front Panel and Rear Panel

1. Key lock
2. HDD front panel
3. HDD LED indicator

1. SATA power connector (15P)
2. SATA data connector (7P)
3. Access LED connector (4P)



6. LED Indication

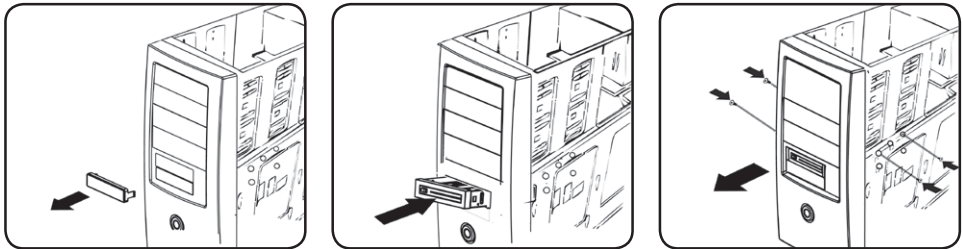
Action	LED Indication
Power on	LED shines blue
HDD access	LED blinks orange

7. Assembly of HDD and into PC

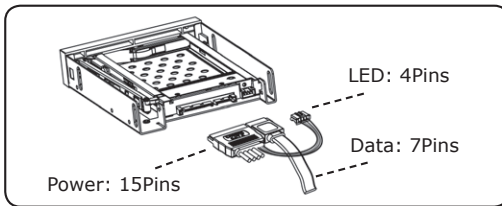
⚠ Attention!

Please connect the LED cable, which is delivered in the package. Otherwise the LED has no function!

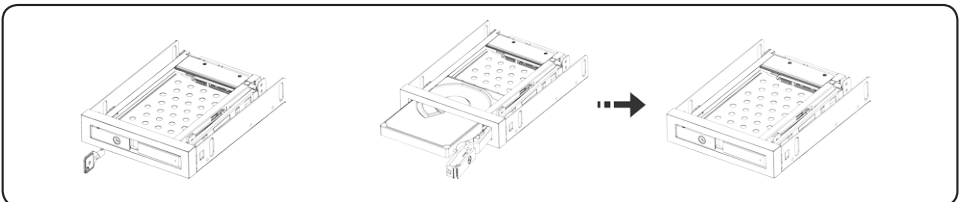
7.1



7.2



7.3



1. Modell – HDD – Schnittstelle – Farbe

Modell	HDD	Schnittstelle	Farbe
IB-2217StS	1x 2,5" SATA	1x SATA	schwarz

2. Verpackungsinhalt

1x IB-2217StS, SATA Kabel , Strom + LED Kabel, 4x Schrauben, 1x Handbuch, 2x Schlüssel

3. Hauptmerkmale

- 2.5" SATA HDD oder SSD (max. 9,5 mm Bauhöhe) in 1x 3,5" Schacht
- EasySwap® – HDD oder SSD-Einbau ohne Werkzeug
- Festplattenkapazität ohne Einschränkung
- Datenübertragung über SATA bis 6 Gbit/s
- LED für Strom und HDD Zugriff
- Plug & play und Hot Swap
- Unterstützt alle Betriebssysteme

4. Technische Daten

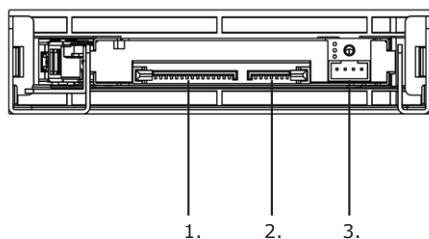
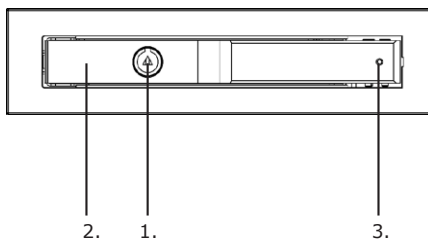
Host Interface: 1 x 15Pin SATA Strom Connector
1 x 7Pin SATA Daten Connector

Material: Edelstahl / Kunststoff

HDD Höhe: max. 9,5 mm

5. Frontblende und Rückseite

- | | |
|----------------------|-------------------------------|
| 1. Schloss | 1. SATA Strom Connector (15P) |
| 2. HDD Frontblende | 2. SATA Daten Connector (7P) |
| 3. HDD LED Indikator | 3. Zugriff LED Connector (4P) |



6. LED Anzeige

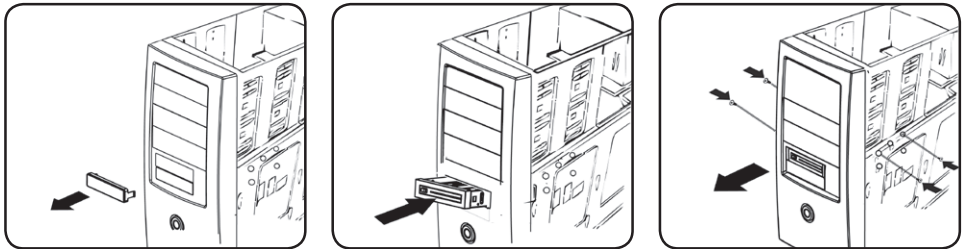
Aktion	LED Anzeige
Stromzufuhr	leuchtet blau
HDD Zugriff	blinkt orange

7. Installation

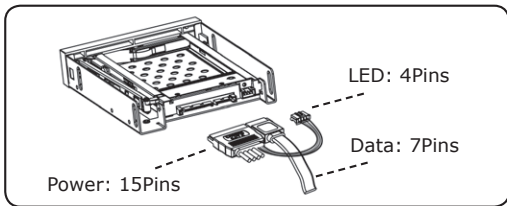
⚠ Achtung!

Bitte schließen Sie das in der Verpackung befindliche LED Kabel an, sonst hat die LED keine Funktion!

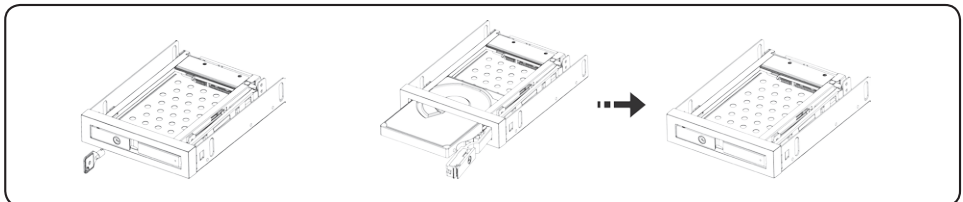
7.1



7.2



7.3



1. Modèle – Disque dur – Interface – Couleur

Modèle	Disque dur	Interface	Couleur
IB-2217StS	1x 2,5" SATA	1x SATA	Noir

2. Contenu

1x IB-2217StS, 1x SATA câble, 1x LED câble, 4x Vis, 1x Manuel, 2x clé

3. Caractéristiques

- Disque dur SATA 2.5" (hauteur 9,5 mm max) ou SSD dans une baie 3.5"
- EasySwap® – Changement rapide d'un disque dur ou d'un SSD
- Sans limite de capacité pour les disques durs
- SATA = 6 Gbit/s
- LED pour la mise sous tension et l'accès au disque dur
- Plug & Play et Hot Swap
- Compatible avec tous les systèmes d'exploitation

4. Données techniques

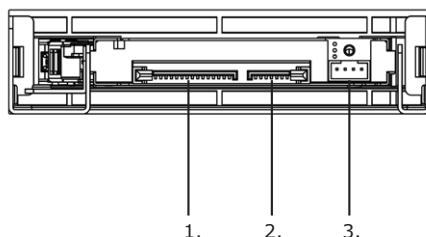
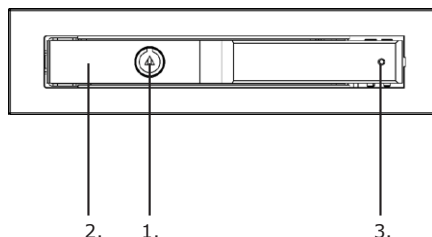
Interface : 1 x Connecteur SATA 15 broches
 1 x Connecteur SATA 7 broches

Matériel : Acier affiné/Plastique

Hauteur du disque dur : 9,5 mm max

5. Façade Avant et panneau arrière

- | | |
|---------------------|-----------------------------------------|
| 1. Serrure | 1. SATA connecteur d'alimentation (15P) |
| 2. HDD Façade Avant | 2. SATA data connecteur (7P) |
| 3. HDD LED | 3. LED Accès connecteur (4P) |



6. Indication des LED

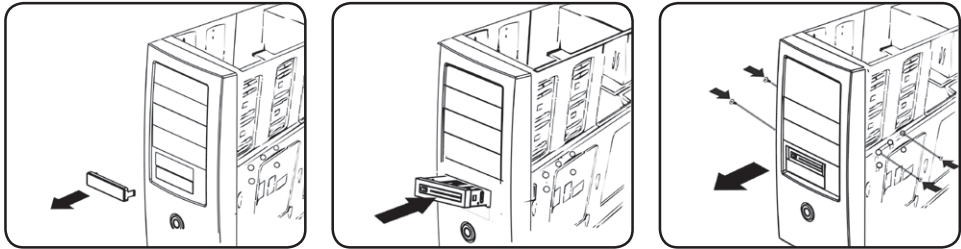
Action	Couleur de la LED
Mise sous tension	LED s'allume bleu
Accès au disque dur	LED clignote en orange

7. Vue d'ensemble, disque dur assemblé

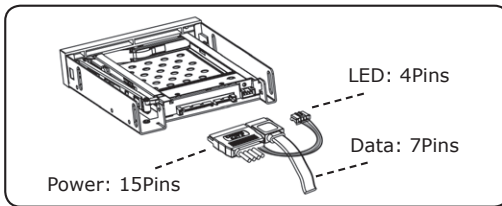
⚠ Attention!

Veuillez connecter le câble pour les LED se trouvant dans l'emballage afin de faire fonctionner celles-ci.

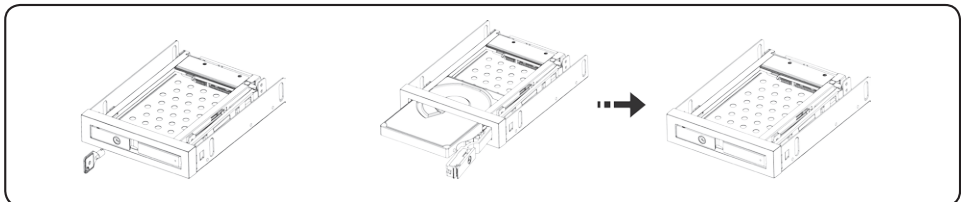
7.1



7.2



7.3



1. Modelo – Disco duro – Interfaz – Color

Modelo	Disco duro	Interfaz	Color
IB-2217StS	1x 2,5" SATA	1x SATA	Negro

2. Contenido del embalaje

1x IB-2217StS, 1x SATA câble, 1x LED câble, 4x tornillo, 1x manual, 2x clave

3. Características principales

- 2.5" SATA HDD (máximo 9,5 mm de altura) o SSD en 1x 3.5" carcasa
- EasySwap®- Fácil instalación e intercambio de HDD o SSD sin herramientas
- Capacidad de disco duro sin límite
- Velocidad de transferencia: SATA hasta 6 Gbit/s
- LED para función y acceso de HDD
- Soporta Plug&Play y HotSwap
- Soporta todos sistemas operativos

4. Datos Técnicos

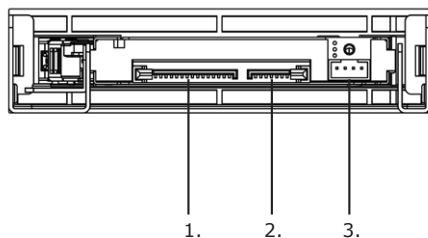
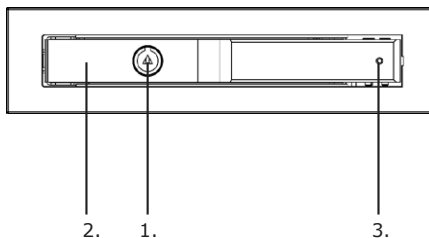
Interfaz: 1 x 15pin SATA conector de alimentación
1 x 7pin SATA conector de datos

Material: Acero inoxidable /Plástico

Altura de HDD: máximo 9,5 mm

5. Panel delantero y panel trasero

- | | |
|------------------------|----------------------------------------|
| 1. Cerradura | 1. SATA conector de alimentación (15P) |
| 2. HDD Panel delantero | 2. SATA conector de datos (7P) |
| 3. HDD LED indicador | 3. Acceso LED conector (4P) |



6. Función de los LED

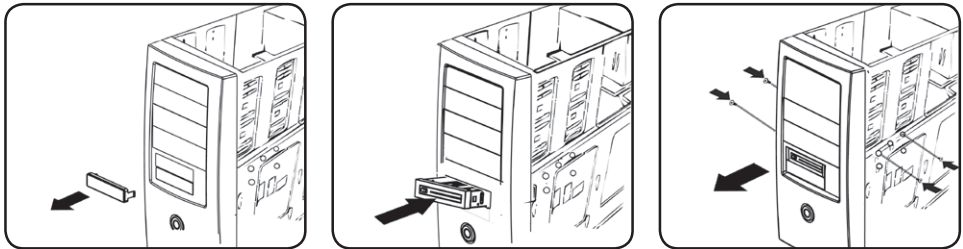
Acción	Indicación de LED
Encender	LED brilla azul
Acceso al HDD	LED parpadea naranja

7. Instalación de HDD y conexión al PC

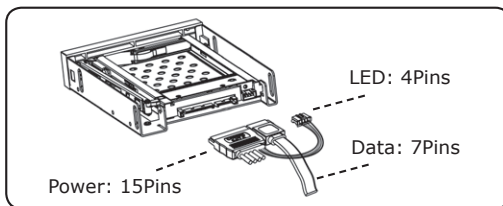
⚠ Atención!

Use el cable LED del embalaje. De otra manera la LED no funciona!

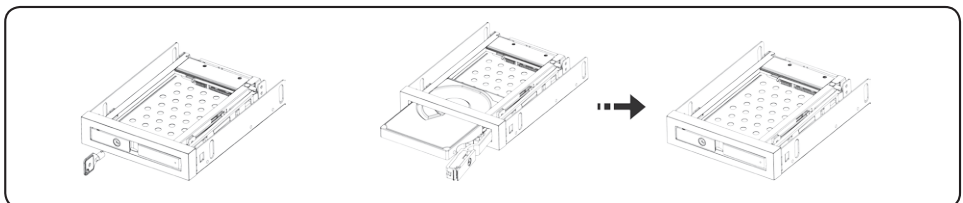
7.1



7.2



7.3



Rack mobile senza vassoio per dischi rigidi SATA da 2,5"

1. Modello – HDD – Interfaccia – Colore

Modello	HDD	Interfaccia	Colore
IB-2217StS	1x 2,5" SATA	1x SATA	nero

2. Contenuti dell'imballo

1x IB-2217StS, 1x SATA cable, 1x LED Cable, 4x Vite,, 1x Manuale, 2x chiave

3. Caratteristiche principale

- 2.5" SATA HDD (massimo altezza 9,5 mm) or SSD in 1x 3.5" baia
- EasySwap® – sostituzione, installazione e cambio a caldo di HDD or SSD
- Hard disk capacita' illimitata
- Interfaccia SATA 6.0 Gbit/s
- LED di accensione e HDD
- Plug & play e hot swap
- Supporto a tutti i sistemi operativi

4. Dati Tecnici

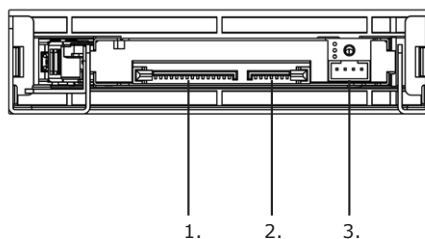
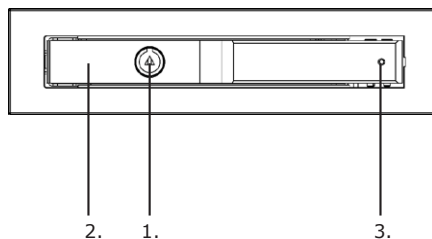
Interfaccia: 1 x 15pin connettori alimentazione SATA
1 x 7pin connettori dati SATA

Materiale: Acciaio inossidabile /Plastica

HDD altezza: massimo 9,5 mm

5. Pannello frontale e posteriore

- | | |
|-----------------------------|----------------------------------------|
| 1. Serratura | 1. Connettore alimentazione SATA (15P) |
| 2. Pannello frontale HDD | 2. Connettore dati SATA (7P) |
| 3. Indicatore LED dell' HDD | 3. Connettore LED indicatore flusso |



6. LED-Indicazione

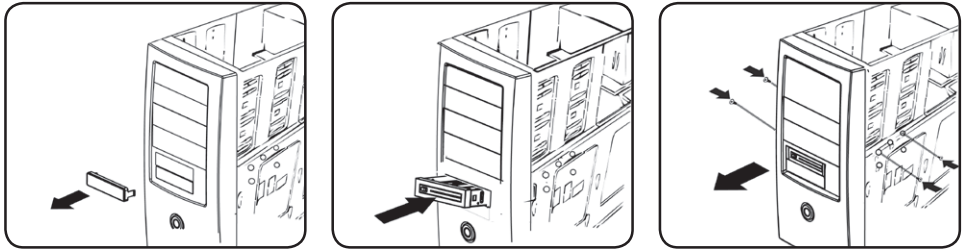
Azione	Stato e coore del LED
Power on	LED luce blu
HDD accesso	LED lampeggia arancia

7. Installazione degli HDD nel PC

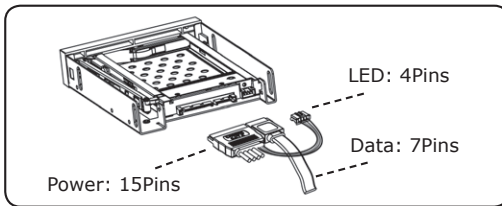
⚠ **Attenzione!**

Per ottenere indicazioni visive dai LED e' necessario collegare I cavi in dotazione.

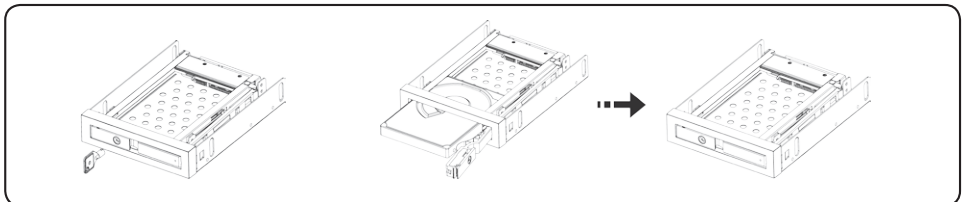
7.1



7.2



7.3



1. Model – HDD – interfejs – kolor

Model	HDD	interfejs	kolor
IB-2217StS	1x 2,5" SATA	1x SATA	czarny

2. Części Paczki

1x IB-2217StS, 1x Kabel SATA, 1x LED+Power Kabel , 4x Śruba, 1x Podręcznik, 2x klucz

3. Główne funkcje

- 2.5" SATA HDD (maks 9,5 mm wysokości) lub SSD w 1x 3.5" gniazdzie
- EasySwap® - instalacje i wymiana HDD lub SSD ez narzędzia
- Nieograniczona wsparcie dla dysków HDD
- SATA interfejs 6.0 Gbit/s
- LED dla zasilania I dostęp HDD
- Wsparcie dla Plug&Play i HotSwap
- Wsparcie dla wszystkich systemów OS

4. Dane Techniczne

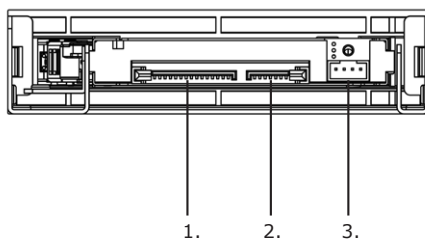
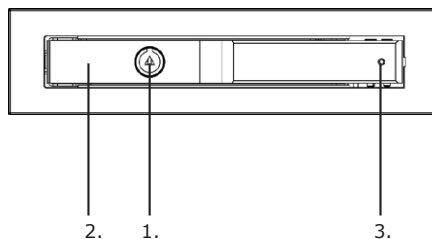
Interfejs: 1 x 15 pin SATA połączenie
1 x 7 pin SATA połączenie

Materiał: Stal nierdzewna/Plastyczne

HDD wysokość: maks 9,5 mm

5. Poprzedni Panel i Zamek Tacy

- | | |
|----------------------|-------------------------------------|
| 1. Zamek | 1. Połączenie zasilające SATA (15P) |
| 2. Paneau HDD | 2. Połączenie SATA (7P) |
| 3. Indykator HDD LED | 3. Połączenie LED Wskaźnik (4P) |



6. LED Wskaźnik

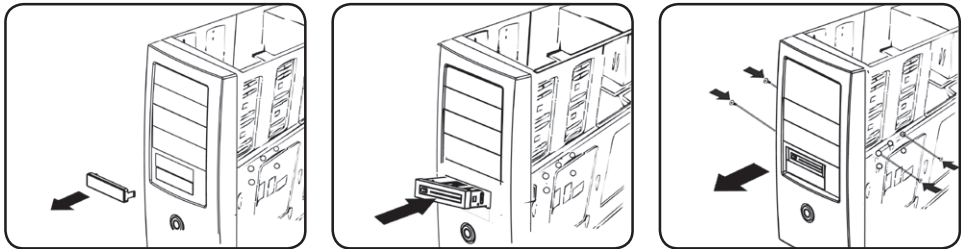
Działanie	LED Wskaźnik
Włączone	LED świeci na niebiesko
Dostęp HDD	LED mruga na pomarańczowy

7. Układanie HDD I do PC

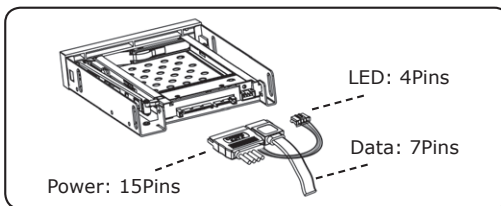
⚠ Uwaga!

Proszę podłączyć kabel do LED z opakowania, inaczej LED zostaje bez funkcji!

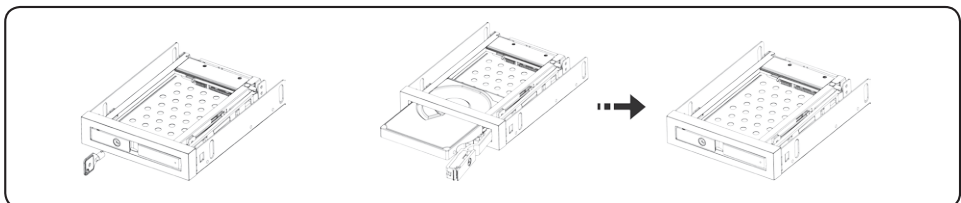
7.1



7.2



7.3



1. Μοντέλο – Μονάδα σκληρού δίσκου (HDD) – Διασύνδεση – Χρώμα

Μοντέλο	HDD	Διασύνδεση	Χρώμα
IB-2217StS	1x 2,5" SATA	1x SATA	μαύρο

2. Περιεχόμενα

1x IB-2217StS, 1x SATA καλώδια, 1x LED καλώδια, 4x βίδες, 1x Εγχειρίδιο, 2x πλήκτρο

3. Χαρακτηριστικά

- 2.5" SATA HDD (max 9,5 mm ύψος) ή SSD σε 1x 3.5" θέση
- EasySwap® – εγκατάσταση και εναλλαγή HDD ή SSD χωρίς εργαλεία
- Χωρίς όριο χωρητικότητας δίσκου
- SATA επικοινωνία 6.0 Gbit/s
- Ενδεικτικό LED για τροφοδοσία και χρήση HDD
- Plug & play και hot swap
- Υποστήριξη όλων των λειτουργικών (OS)

4. Τεχνικά Χαρακτηριστικά

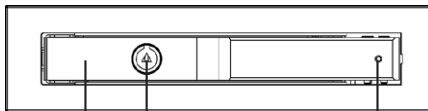
Interface: 1 x 15pin SATA σύνδεση ρεύματος
1 x 7pin SATA στοιχεία σύνδεσης

Υλικό: Ανοξείδωτο χάλυβα /πλαστικό

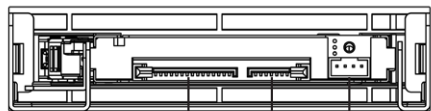
Υψος HDD : μέγιστο 9.5 mm

5. Εμπρός όψη

1. κλειδαριά
2. κάλυμμα HDD
3. ενδεικτικό LED
1. SATA σύνδεση ρεύματος (15P)
2. SATA σύνδεση data (7P)
3. Σύνδεση LED (4P)



2. 1. 3.



1. 2. 3.

6. Ενδειξη LED

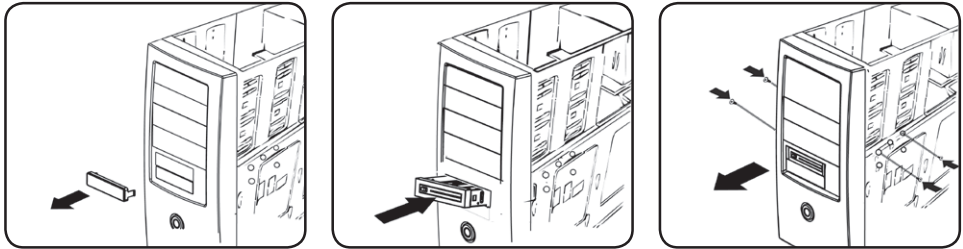
Λειτουργία	Ενδειξη LED
Τροφοδοσία	LED ανάβει μπλέ
Χρήση HDD	LED θα αναβοσβήνει πορτοκαλί

7. Τοποθέτηση HDD και εγκατάσταση σε PC

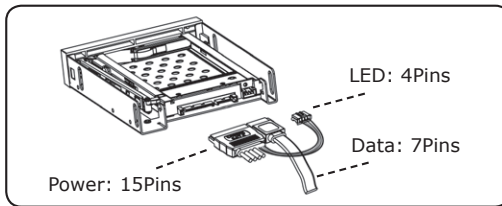
▼ Προσοχή!

Συνδέστε το καλώδιο του LED που υπάρχει στην συσκευασία για να έχετε σωστή ένδειξη!

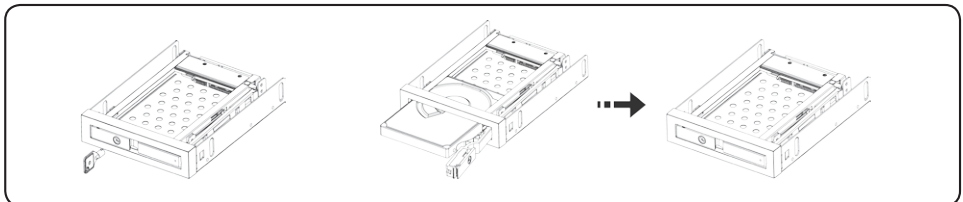
7.1



7.2



7.3



1. Модель – HDD – Интерфейс – Цвет

Модель	HDD	Интерфейс	Цвет
IB-2217StS	1x 2,5" SATA	1x SATA	черный

2. Содержание упаковки

1x IB-2217StS, 1x SATA Кабель, 1x LED + питание Кабель, 4x шурупы, 1x руководство, 2x ключ

3. Основные свойства

- Два по 2.5" SATA HDD или SSD в одном 3,5" корпусе
- EasySwap® функция – HDD или SSD-корпус без инструментов
- Ёмкость жесткого диска не ограничена
- Скорость передачи данных до 6 Гбит/с
- HDD закрывается
- Plug & play и hot swap функции
- Поддерживает все операционные системы

4. Технические данные

Хост интерфейс: 1 x 15 пин SATA питание порт
1 x 7 пин SATA данные порт

Материал: Нержавеющая сталь/пластик

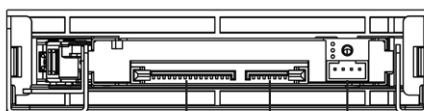
ВысотаHDD : макс. 9,5 мм

5. Передняя и назад панель

- | | |
|----------------------------|-----------------------------------|
| 1. Замок | 1. SATA Разъем питания (15пин) |
| 2. HDD фронтальная панель | 2. SATA порт данных (7пин) |
| 3. Индикатор подсветки HDD | 3. Подсветка порта доступа (4пин) |



2. 1. 3.



1. 2. 3.

6. Светодиодный индикатор

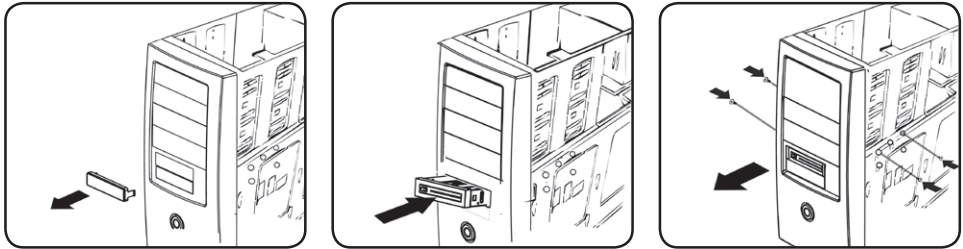
Действие	светодиодный индикатор
подача эл. энергии	горит синий (при наличии HDD)
Доступ к HDD	Светодиод будет мигать оранжевым

7. Установка

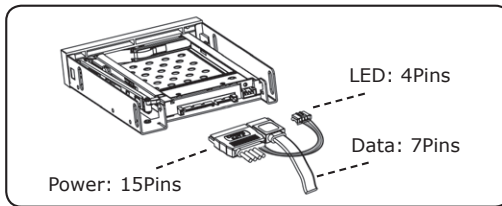
⚠ Внимание!

Пожалуйста, соедините кабель с подсветкой, находящийся в упаковке. Иначе он не будет функционировать!

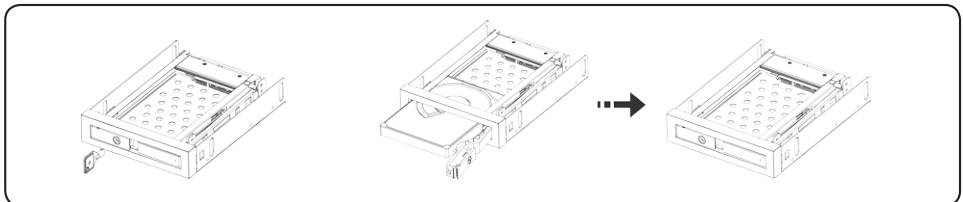
7.1



7.2



7.3



ICY BOX[®]

© Copyright 2014 by RaidSonic Technology GmbH. All Rights Reserved

The information contained in this manual is believed to be accurate and reliable. RaidSonic Technology GmbH assumes no responsibility for any errors contained in this manual. RaidSonic Technology GmbH reserves the right to make changes in the specifications and/or design of the above mentioned product without prior notice. The diagrams contained in this manual may also not fully represent the product that you are using and are there for illustration purposes only. RaidSonic Technology GmbH assumes no responsibility for any differences between the product mentioned in this manual and the product you may have.