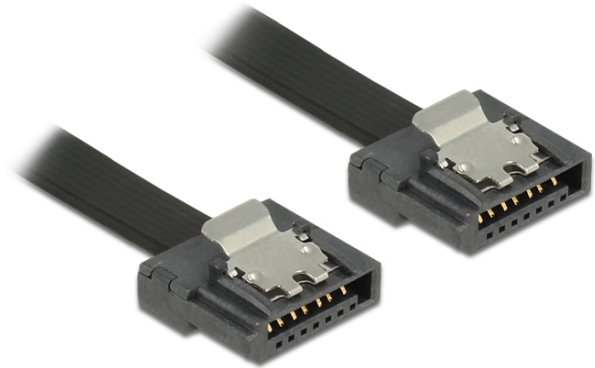


Delock Cable SATA FLEXI 6 Gb/s 20 cm black metal

Description

The new Delock SATA Flexi cables were specifically designed to be used in tight spaces in chassis. They are ultra-flexible and can be bent or kinked as required, even knots are possible. Another advantage is the extreme durability that prevents breakage or material weakness of the cables. By using the SATA Flexi cables, angled connectors are no longer necessary; the connectors can be easily bent in every desired direction. The short connectors provide more flexibility in tight spaces and are practical to use, and the metal clips ensure that the cables reliably click into place. The cables support data transfer rates of up to 6 Gb/s and are downwards compatible to previous SATA versions.



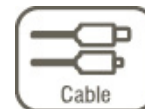
Specification

- Connector:
SATA 6 Gb/s 7 pin male straight >
SATA 6 Gb/s 7 pin male straight
- Data transfer rate up to 6 Gb/s
- Downwards compatible to SATA 1.5 Gb/s and 3 Gb/s
- Cable gauge: 28 AWG
- Colour: black
- With metal clips
- Cable length: ca. 20 cm

System requirements

- One free SATA port

Item No. 83839



| | |
|-------------------|---------------|
| EAN | 4043619838394 |
| Country of origin | China |

Package content

- SATA FLEXI cable

Package

- Poly bag

Images

