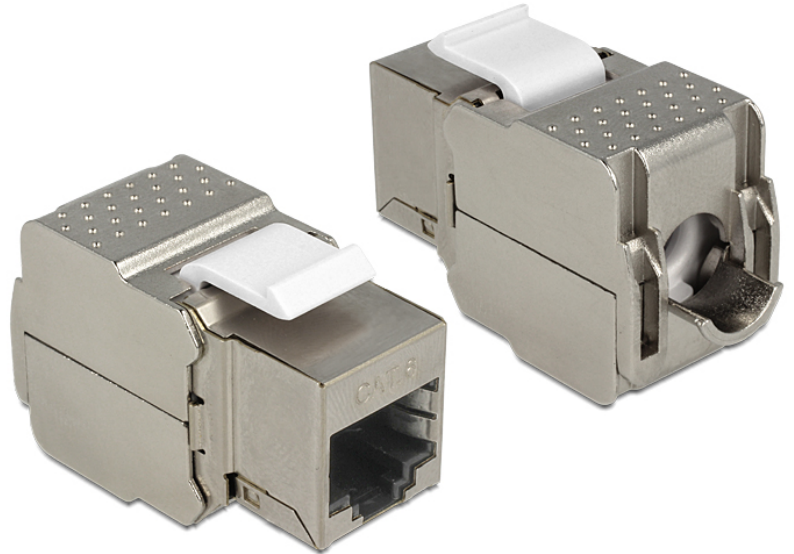


Delock Keystone Module RJ45 female > LSA Cat.6

Description

This module by Delock can be used to connect twisted pair cable to an RJ45 female port. With its standardised dimensions it can be used for easy snap-in mounting in e. g. a Keystone patchpanel, face plate or surface-mount box.



Specification

- Connector: RJ45 female (8P/8C) > LSA (toolless)
- Shielded (Cat.6)
- For Keystone ports with 19.2 x 14.9 mm
- Dimensions (LxWxH): ca. 37.8 x 16.0 x 21.9 mm

Item No. 86154



EAN 4043619861545

Country of origin China

Package content

- Keystone module
- Cover
- Zip-tie

Package

- Poly bag

Images

