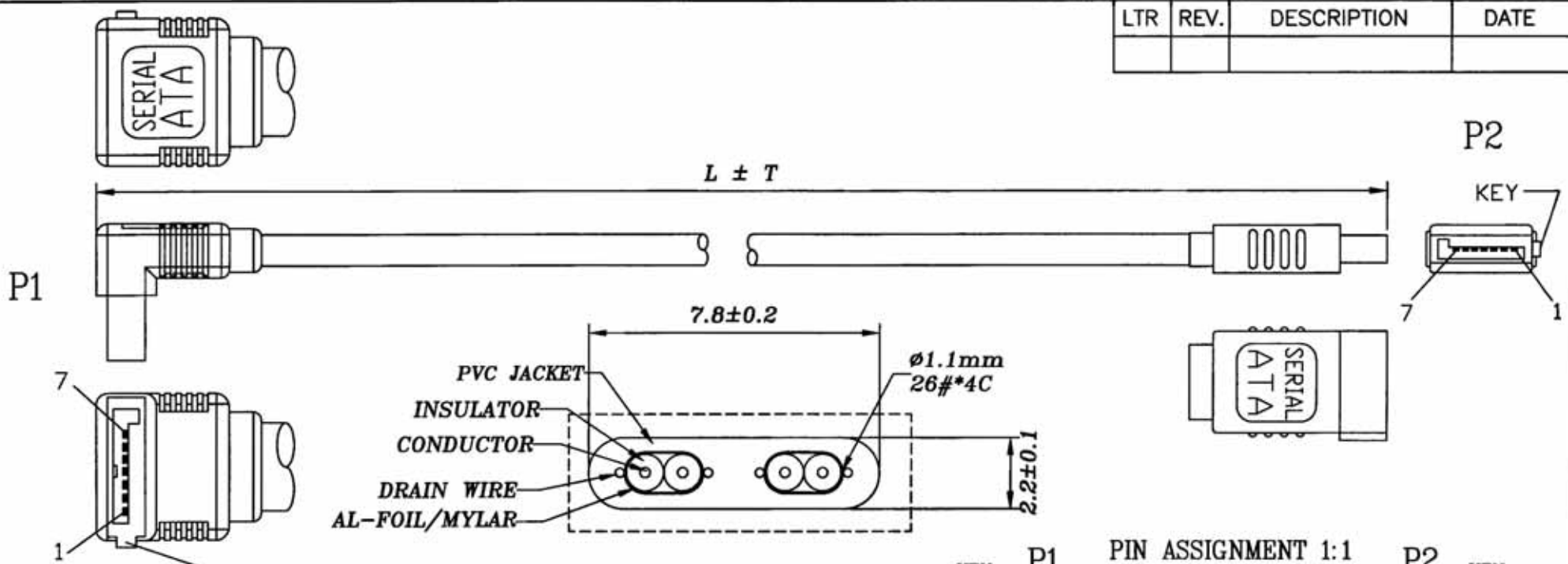
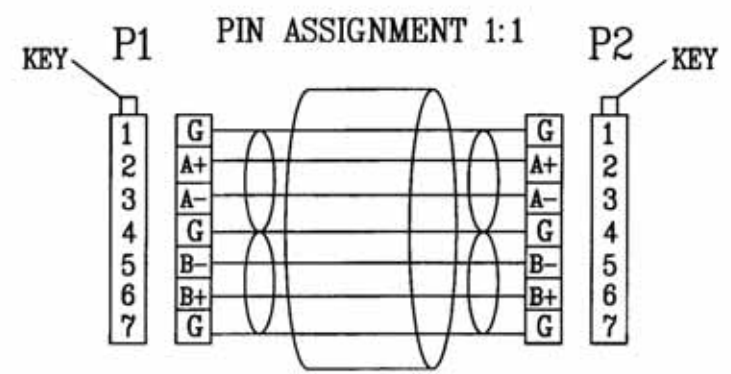


LTR	REV.	DESCRIPTION	DATE



NOTE:

1. CABLE:
 UL2725 80°C 30V [26AWG(1/0.404)*2F
 +AL/MY+DRAIN WIRE(1/0.32)*2]TIN
 INS: FOAM-PE OD: $\phi 1.1 \pm 0.05$ mm
 PVC JACKET OD: $\phi (2.2 \pm 0.1) * (7.8 \pm 0.2)$ mm COLOR: RED (PANTONE 200C)
 PRINT: 2725 E209329 RJ AWM 80°C 30V VW-1 Serial ATA 26AWG LIAN FENG (BLACK WORD)
 IMPEDANCE: 100±5 OHM (SUPPLIER: LIAN FENG)
2. CONNECTOR:
 2-1 MATERIAL:
 HOUSING: HIGH TEMPERATURE POLYESTER & GLASS FIBER UL 94V-0
 TERMINAL: COPPER ALLOY
 2-1 PLATING:
 CONTACT AREA: 15u" GOLD PLATED
3. HOOD: MOLDED TYPE, PVC 45P, COLOR: BLACK(NK-K01)
4. CABLE ASS'Y ELECTRICAL TEST:
 4-1 100% OPEN SHORT & MIS WIRE TEST
 4-2 CONTACT RESISTANCE 2 OHM MAX
 4-3 INSULATION RESISTANCE 20M OHM MIN
5. PACKING: EACH PC / POLYBAG



140-0723-1	500	10
DWG	L (mm)	T (mm)

Tolerance	Inch	M/M
.X	.015	.30
.XX	.010	.10
.XXX	.005	.05
Draw		
Check		
Engr		



SERIAL ATA SIGNAL CABLE

www.equip-info.net