

USB TO SERIAL CONVERTER USER MANUAL

MODEL 174947




MANHATTAN[™]

MAN-174947-UM-0609-01

INTRODUCTION

Thank you for purchasing this MANHATTAN® USB to Serial Converter, Model 174947.

Today's computers often aren't equipped with RS232 ports, making the use of legacy peripherals and communication devices more difficult. With its serial RS232 ports, the MANHATTAN USB to Serial Converter easily expands a single USB 1.1 port to connect and support a couple of serial modems, barcode scanners, digital cameras, card readers and other devices.

The easy-to-follow instructions in this manual help make installation of the converter quick and simple, so you'll also soon be enjoying the benefits of these additional features:

- Transfer rate of up to 115.2 kbps
- Windows compatible
- Plug and Play
- Hot-swappable
- Lifetime Warranty

System Requirements

- USB 1.1 or 2.0 port
- Windows 2000/XP/Vista

Package Contents

- USB to Serial Converter
- User manual and driver CD

INSTALLATION

NOTE: The procedure for Windows 2000 and XP presents XP screen images, which are essentially the same as Windows 2000. Some screen images have been modified to fit the format of this manual.

Windows 2000/XP

1. Insert the included driver CD in the computer's CD-ROM drive.
2. Run the InstallShield Wizard.
3. When the wizard is finished, restart the system.
4. Connect the MANHATTAN USB to Serial Converter to the serial device(s) and an open USB port on the computer.

NOTE: In Windows XP only, a Software Certification screen may display (as shown at right). Click "Continue Anyway."



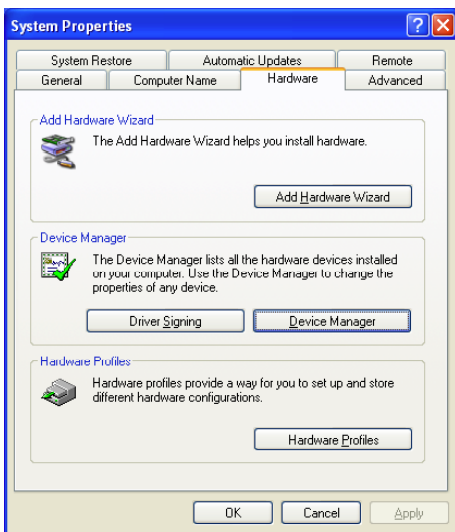
Windows Vista

1. Connect the USB to Serial Converter to the serial device(s) and an open USB port on the computer.
2. Allow Vista to automatically search for updates on the Internet.
NOTE: Make sure the computer is connected to the Internet. Vista will automatically download any appropriate update(s) and install the proper driver required for adapter operation. (If the necessary updates are already on your system, Vista will find them.)

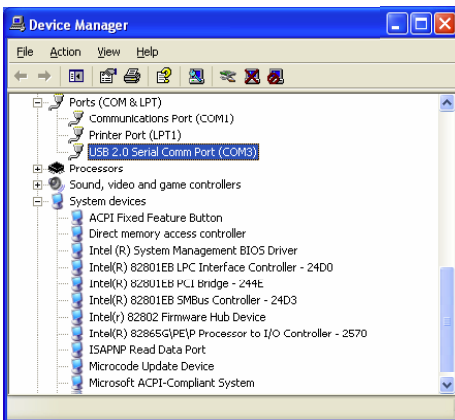
Installation Verification

1. To confirm that the installation has been successful, right-click My Computer on the desktop to display the System Properties screen.

2. Click “Hardware,” then click “Device Manager.”



3. The device will be presented as shown if it's been installed properly.



SPECIFICATIONS

Standards and Certifications

- CE
- FCC
- USB 1.0
- USB 1.1

Connections

- (1) USB port; type-A male
- (2) RS232 port; 9-pin male

General

- Transfer rate: up to 115.2 kbps
- Bus powered
- Over-current protection

Physical

- Cable length: 45 cm (18 in.)
- Weight: 225 g (7.9 oz.)

System Requirements

- USB 1.1 or 2.0 port
- Windows 2000/XP/Vista

Package Contents

- USB to Serial Converter
- User manual and driver CD



MANHATTAN™

BRINGING COMPUTERS TO LIFE

MANHATTAN® offers a complete line
of PC Components, Peripherals, Cables and Accessories.

Ask your local computer dealer for more information
or visit us online at

www.manhattan-products.com

Copyright © MANHATTAN

All products mentioned are trademarks or registered trademarks of their respective owners.