

1. Package Content

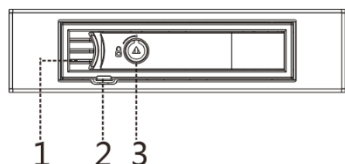
1x IB-2213SSK, 2x keys, 1x screwset, 1x manual

2. Key Features

- Antivibration Mobile Rack 2.5" HDD/SSD to 3.5" bay
- For 1x 2.5" SATA I/II/III & SAS HDD/SSD (7-15 mm)
- Data transfer rate up to 6 Gbit/s
- Key lock & Hot Swap
- Windows, Mac compatible

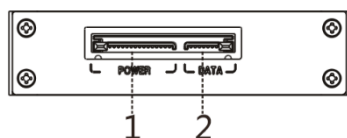
3. Front view

1. Tray release latch
2. LED indicator
3. Lock

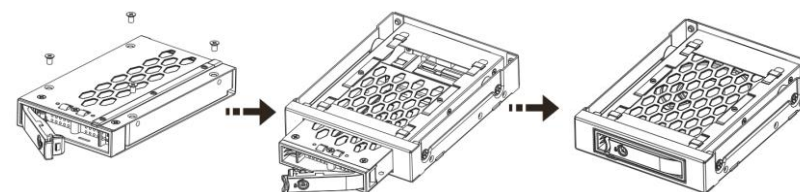
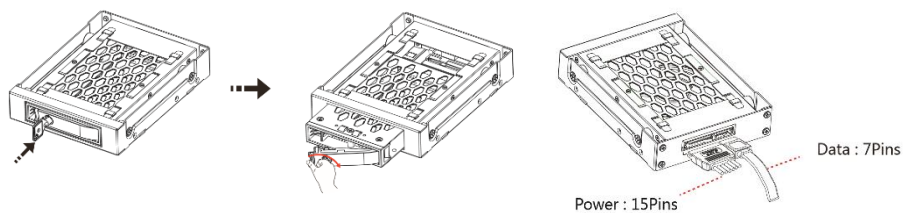


4. Back view

1. SATA power port (15 pin)
2. SATA data port (7 pin)

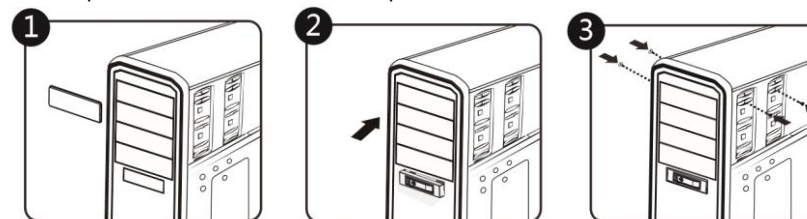


5. Installation HDD/SSD



6. Installation in Computer

- Turn OFF the power to your computer and any other connected peripheral devices.
- Unplug the power cord from the back of the computer and remove your computer's cover.
- Put the Mobile rack in one free 3.5" bay and fix it with the screws.
- Connect the SATA connector to the referring connectors on the main board.
- Connect the 15 pin SATA power cable to the power supply of your PC. Replace the computer cover and reconnect the power cord.



ICY BOX®



© Copyright 2017 by RaidSonic Technology GmbH. All Rights Reserved

The information contained in this manual is believed to be accurate and reliable. RaidSonic Technology GmbH assumes no responsibility for any errors contained in this manual. RaidSonic Technology GmbH reserves the right to make changes in the specifications and/or design of the above mentioned product without prior notice. The diagrams contained in this manual may also not fully represent the product that you are using and are there for illustration purposes only. RaidSonic Technology GmbH assumes no responsibility for any differences between the product mentioned in this manual and the product you may have.

1. Verpackungsinhalt

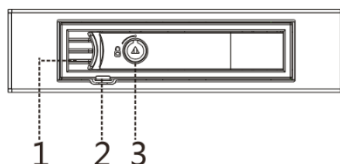
1x IB-2213SSK, 1x Schraubensatz, 2x Schlüssel, 1x Handbuch

2. Merkmale

- Antivibration Wechselrahmen 2,5" HDD/SSD in 3,5" Einbauschacht
- Für 1x 2,5" SATA I/II/III & SAS Festplatte (7-15mm)
- Datenübertragungsrate bis zu 6 Gbit/s
- Abschließbares Schloß & Hot Swap
- Windows, Mac kompatibel

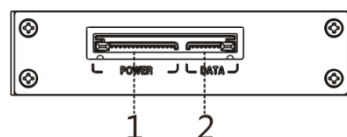
3. Frontansicht

1. Entriegelungshebel
2. LED-Anzeige
3. Schloß

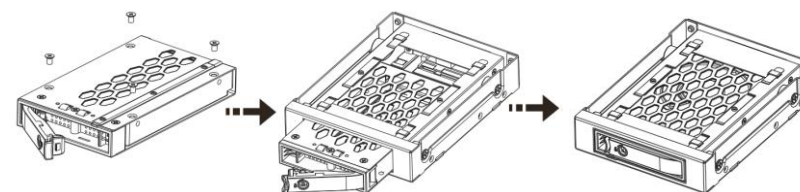
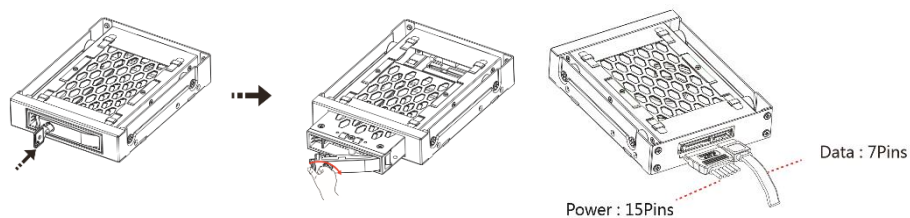


4. Rückansicht

1. SATA Stromverbindung (15 Pin)
2. SATA Datenverbindung (7 Pin)



5. Installation der Festplatten



6. Einbau im Computer

- Schalten Sie Ihren Computer und alle angeschlossenen Geräte aus.
- Entfernen Sie das Stromkabel an der Rückseite Ihres Computers und die Gehäuseabdeckung.
- Setzen Sie das Gerät in einen freien 3,5" Einbauschacht und befestigen diesen mit den entsprechenden Schrauben.
- Verbinden Sie die SATA Kabel mit dem entsprechenden Anschluss auf dem Mainboard.
- Verbinden Sie die internen 15-Pin SATA Stromkabel mit dem Netzteil des PCs.
- Schließen Sie das Computergehäuse und verbinden das Stromkabel wieder.

