



WAN-9151 Version: 1

## 15dBi 5GHz Directional Dual-Polarization Panel Antenna

The LevelOne WAN-9151 is a directional, dual-polarization antenna that can be mounted either indoors or outside. Dual-polarization offers the flexibility of two different communication channels receiving simultaneously, while a high gain of 15dBi offers better range and signal strength. If mounted outdoors the IP65-rated weatherproof housing can withstand temperatures from minus 30°C up to 60°C, as well as rain, snow, dust and other harsh conditions.

### Key Features

- Provides 15dBi directional operation
- Directional operation provides extended point to point coverage
- For IEEE 802.11a/n Wireless applications in 5 GHz frequency range
- Dual-Polarization to avoid interference
- Low wind loading

### Specifications

#### System Specifications

Connectors and Cabling:

2 x N Female

Impedance (Ohms):

50 Ohms

HPBW / Horizontal:

22°

HPBW / Vertical:

15°

VSWR:

? 2.0

Polarization:

Linear Vertical and Horizontal ( $\pm 90^\circ$ )

#### Wireless

Frequency Band:

5.1~5.9 GHz



## Performance

Return Loss:  
? -10

## Environment

Temperature (°C):  
-30? ~ +60?

Humidity (Non-condensing):  
95%@55?

## Physical Specifications

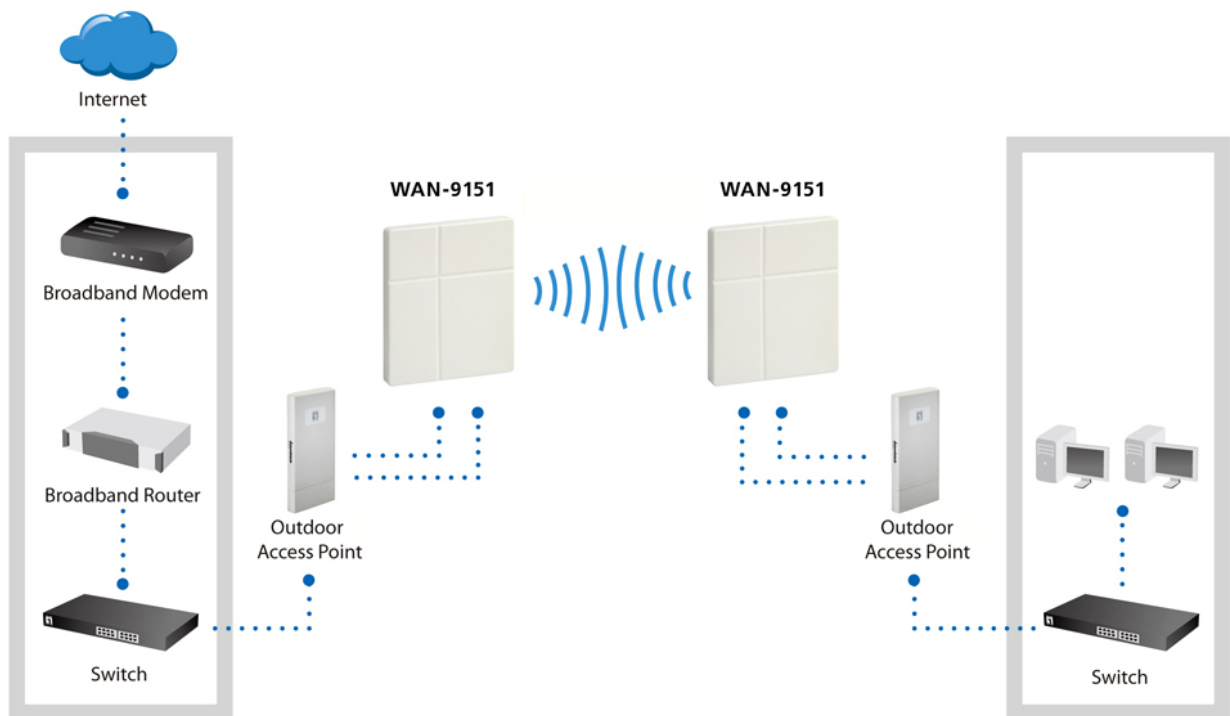
Dimensions (W x D x H mm):  
162.5\*137.5\*16 mm

Weight (g):  
208 g

## Reliability

Survival Wind Speed:  
50 m/s

## Diagram



## Order Information

WAN-9151

## Package Contents

WAN-9151  
Pole Mount Kit  
Quick Installation Guide

---

## Optional Accessory



### **ANC-4130**

3m 400 Series N Plug to N Jack Antenna Cable



### **ANC-4160**

6m 400 Series N Plug to N Jack Antenna Cable

No liability or responsibility for any errors or omissions in the content.  
Specifications are subject to change without notice.  
All mentioned brand names are registered trademarks and property of their owners.  
Copyright © Digital Data Communications GmbH, Germany. All Rights Reserved.