

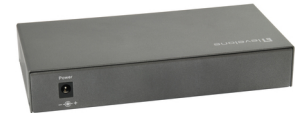


LevelOne GEP-0823 netwerk-switch Gigabit Ethernet (10/100/1000) Power over Ethernet (PoE) Zwart

Merk : LevelOne

Artikelcode: GEP-0823

Productnaam : GEP-0823



LevelOne GEP-0823. Type basis-switching RJ-45 Ethernet-poorten: Gigabit Ethernet (10/100/1000), Aantal basis-switching RJ-45 Ethernet-poorten: 8. Full duplex. MAC-adrestabel: 8000 entries, Switchingcapaciteit: 16 Gbit/s. Netwerkstandaard: IEEE 802.3, IEEE 802.3ab, IEEE 802.3af, IEEE 802.3at, IEEE 802.3u, IEEE 802.3x. Netstekker: DC-in ingang. Power over Ethernet (PoE)

Poorten & interfaces		Energie	
Aantal basis-switching RJ-45 Ethernet-poorten *	8	Ingangsspanning	52 V
Type basis-switching RJ-45 Ethernet-poorten *	Gigabit Ethernet (10/100/1000)	Stroomverbruik (typisch)	10 W
Netstekker	DC-in ingang	Stroomspanning bescherming	Overstroom, Kortsluiting
Netwerk		Power over Ethernet (PoE)	
Netwerkstandaard *	IEEE 802.3, IEEE 802.3ab, IEEE 802.3af, IEEE 802.3at, IEEE 802.3u, IEEE 802.3x	Power over Ethernet (PoE) *	✓
10G support *	✗	Hoeveelheid Power over Ethernet (PoE) ports	8
Koperen ethernetbekabelingstechnologie	10BASE-T, 100BASE-TX, 1000BASE-T	Vermogen per poort Power over Ethernet (PoE)	30 W
Full duplex	✓	Totaal Power over Ethernet (PoE)-budget	120 W
Data-uitwisseling		Eisen aan de omgeving	
Switchingcapaciteit *	16 Gbit/s	Bedrijfstemperatuur (T-T)	-20 - 70 °C
MAC-adrestabel *	8000 entries	Temperatuur bij opslag	-20 - 70 °C
Store-and-forward	✓	Relatieve vochtigheid in bedrijf (V-V)	5 - 90 procent
Jumbo Frames ondersteuning	✓	Luchtvochtigheid bij opslag	5 - 90 procent
Jumbo frames	9126	Gewicht en omvang	
Design		Breedte	86 mm
Stapelbaar *	✗	Diepte	30 mm
Kleur van het product	Zwart	Hoogte	176 mm
Materiaal behuizing	Metaal	Gewicht	450 g
LED-indicatoren	Activiteit, LAN, Stroom	Verpakking	
Land van herkomst	China	Snelstartgids	✓
Certificering	CE,FCC	Inclusief AC-adapter	✓
Prestatie		Breedte verpakking	230 mm
Intern geheugen	1 MB	Diepte verpakking	60 mm
Buffergrootte	8 KB	Hoogte verpakking	290 mm
Mean time between failures (MTBF)	30000 uur	Gewicht verpakking	950 g
Energie		Logistieke gegevens	
Stroom	2.5 A	Code geharmoniseerd systeem (HS)	85176990



4015867207444

Disclaimer. The information published here (the "Information") is based on sources that can be considered reliable, typically the manufacturer, but this Information is provided "AS IS" and without guarantee of correctness or completeness. The Information is only indicative and can be changed at any time without notification. No rights can be based on the Information. Suppliers or aggregators of this Information do not accept any liability with regard to the content of (web)pages and other documents, including its Information. The publisher of the Information can not be held liable for the content of 3rd party websites that are linking this Information or are linked to from this Information. You as the User of the Information are solely responsible for the choice and usage of this Information. You are not entitled to transfer, copy or otherwise multiply or distribute the Information. You are obliged to follow the directions of the copyright owner(s) with regard to the use of the Information. Exclusively Dutch law is applicable. With regard to price and stock data on the site, the publisher followed a number of starting points, which are not necessarily relevant for your private or business circumstances. Therefore, the price and stock data are only indicative and are subject to changes. You are personally responsible for the way you use and apply this information. As a user of the Information or sites or documents in which this Information is included, you will adhere to standard fair use including avoidance of spamming, ripping, intellectual-property violations, privacy violations, and any other illegal activity.

Publication date: 24-SEP-2024. Prints or copies of Information are only valid on the printed Publication date