



QUICKSTORE PORTABLE **USB 3.0**

Manual



Content

1. Features
2. Specifications
3. Parts and accessories
4. The device at a glance
5. Installing a SATA hard disk drive
6. Installing the software
7. The backup software
 - 7.1 Start
 - 7.2 Quick Launch
 - 7.3 File Backup
 - 7.4 File manager
 - 7.5 Setup
 - 7.5.1 Files Backup
 - 7.5.2 Others

Dear customer!

Congratulations for purchasing this premium quality SHARKOON product.

For a long life time and to take full advantage of this product we recommend that you read this manual completely.

Have a good time with our product!

SHARKOON Technologies GmbH

1. Features

- Suitable for 2.5" SATA hard disk drives (9.5 mm height)
- Tool free assembly
- "One Click Backup" function (only Windows)
- Backup software included
- No drivers needed for Windows, Mac and Linux

2. Specifications

- External interface: Mini USB3.0 (compatible to USB2.0 and USB1.x)
- Internal interface: SATA (Version I and II)
- Data transfer rate: max. 5 Gbit/s
- Dimensions: 135 x 85 x 14 mm (L x W x H)
- Weight: ~51 g

3. Parts and accessories



- QuickStore Portable USB3.0 (A)
- USB3.0 cable (B)
- Quick start manual (C)
- Tools CD incl. backup software and extensive manual (PDF / D)

Note:

If you are missing any of the items listed above, please contact our customer service via e-mail at support@sharkoon.com or call + 49 (0) 6403 – 775 6100.

4. The device at a glance



A – QuickStore Portable in respective version (black, mirrored, blue, red or silver)

B – Backup button: pressing this button starts a backup process with the pre-defined settings (see chapter 7)



A – Case cover lock



A – Case cover



A – SATA connector (data and power)

B – HDD mounting bay (for one 2.5"-SATA HDD)

5. Installing a SATA hard disk drive

1. Open the case cover lock (fig. 1).



fig. 1

2. Remove the case cover from the case body (fig. 2).

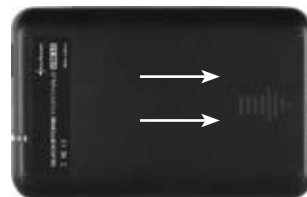


fig. 2

3. Slide a 2.5" SATA HDD into the HDD mounting bay (fig. 3).



fig. 3

- Place the case cover back onto the case body (fig. 4).

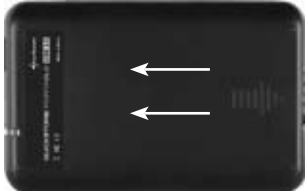


fig. 4

- Close the lock (fig. 5).



fig. 5

- Use the included USB3.0 cable to connect the device's Mini USB3.0 connector to a USB3.0 connector of your PC/laptop.
- The QuickStore Portable will automatically be recognized by the operating system and all required drivers will be installed. The device is now ready.

Note:

Brand new HDDs built into the case must be partitioned and formatted. Proceed as described below (e.g. Windows XP): Start / Settings / Control Panel / Administrative Tools / Computer Management / Disk Management. Click the respective HDD with the right mouse button and choose partition/format.

6. Installing the software

- Insert the included Driver&Tools CD into your CD/DVD drive.
- Choose your CD/DVD drive (e.g. D:\).
- Open the folder "Sharkoon".
- Start "Setup.exe". The installation wizard will guide you through the installation procedure.
- After the installation is completed the following icon will appear on your desktop:

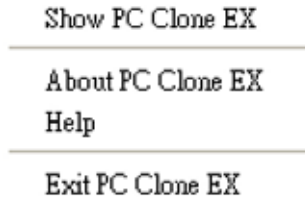


- Double-click (left mouse button) this desktop icon to launch the software, the main interface will open up and another program icon will appear in your task bar.

7. The backup software

7.1 Start

1. Click the icon in your task bar with the right mouse button once. The following context menu will open up:



2. "About..." displays information about the software (fig. 6).



fig. 6

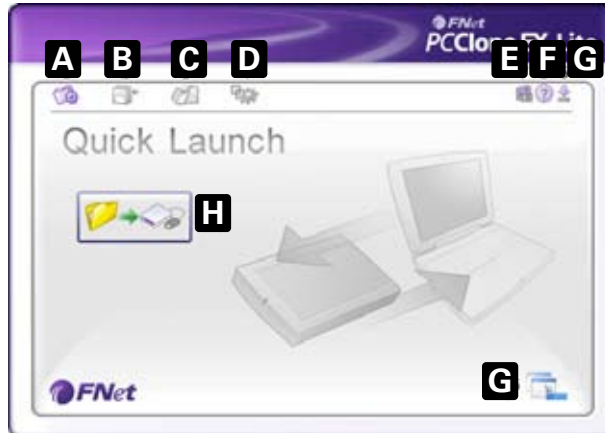
3. "Help" starts the help program of the backup software (fig. 7) where all functions of the backup software will be explained in detail.



fig. 7

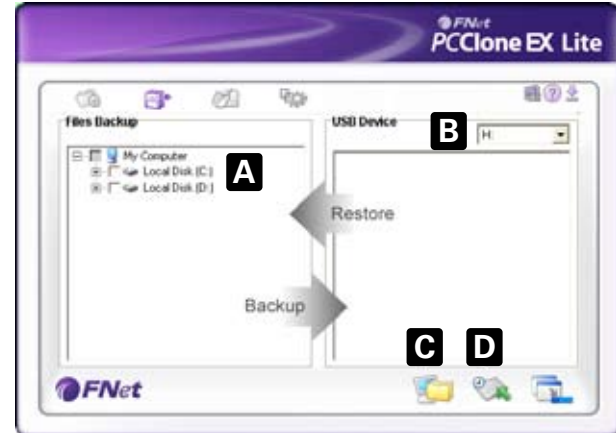
4. "Exit PC Clone EX" quits the program (the icon will be removed from your task bar).
5. "Show PC Clone EX" re-opens the program interface after you have minimized it (see below). Alternatively you may re-open the program interface by double-clicking (left mouse button) the icon.

7.2 Quick Launch



- A – Quick Launch (7.2)
- B – File Backup (7.3)
- C – File Manager (7.4)
- D – Setup (7.5)
- E – Shows you information about the software (see above 7.1).
- F – Starts the help program of the backup software (see above 7.1)
- G – Minimize the program window. To completely quit the program see above 7.1.
- H – Start the data backup by clicking this button.

7.3 File Backup



- A – All folders of your system are displayed here. Choose the folders that shall be copied during a backup, by ticking the respective checkbox(es).
- B – Select the external target device from the dropdown menu.
- C – Start the backup by clicking the button.
- D – Restore already existing backup files from the external (backup) drive, by clicking this button.

Note:

The backup files are copied to the (hidden) folder "Fnet" on the target device. This folder must not be deleted!

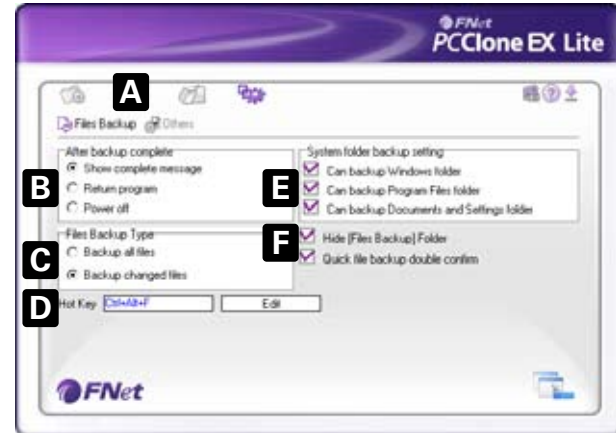
7.4 File manager



The File Manager makes it easy to govern your local folders/files and supports similar functions as known from the Windows Explorer.

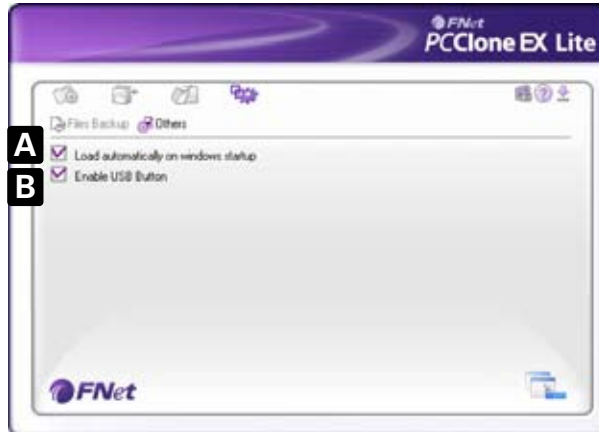
7.5 Setup

7.5.1 Files Backup



- A – Select between the windows "Files Backup" (7.5.1) and "Others" (7.5.2).
- B – Decide what shall happen after the backup has been completed: "Show complete message" will show a summary of the backup; "Return program" returns to the program; "Power off" will shut down your system.
- C – Choose whether all or only changed files shall be secured.
- D – Determine a hot key to start the backup.
- E – Select which system folders shall be included into the backup.
- F – Determine whether the Files Backup folder shall be hidden and if the quick file backup shall be double confirmed or not.

7.5.2 Others



- A – Decide if the program shall be started during system boot-up.
- B – Activating this check box will also activate the backup button on the enclosure enabling you to commence a backup process by simply pressing the respective button (see above 4.). Deactivating will prevent unintentional backup procedures.

Warning:

For potential loss of data, especially due to inappropriate handling, SHARKOON assumes no liability.

All named products and descriptions are trademarks and/or registered trademarks of the respective manufacturers and are accepted as protected. As a continuing policy of product improvement at SHARKOON, the design and specifications are subject to change without prior notice. National product specifications may vary.

The legal rights of the enclosed software belong to the respective owner. Please observe the license terms of the manufacturer before using the software. All rights reserved especially (also in extracts) for translation, reprinting, reproduction by copying or other technical means. Infringements will lead to compensation.

All rights reserved especially in case of assignation of patent or utility patent. Means of delivery and technical modifications reserved.

Disposal of your old product

Your product is designed and manufactured with high quality materials and components, which can be recycled and reused.



When this crossed-out wheeled bin symbol is attached to a product, it means the product is covered by the European Directive 2002/96/EC. Please be informed about the local separate collection system for electrical and electronic products.

Please act according to your local rules and do not dispose of your old products with your normal household waste. The correct disposal of your old product will help prevent potential negative consequences to the environment and human health.

© SHARKOON Technologies 2010

www.sharkoon.com