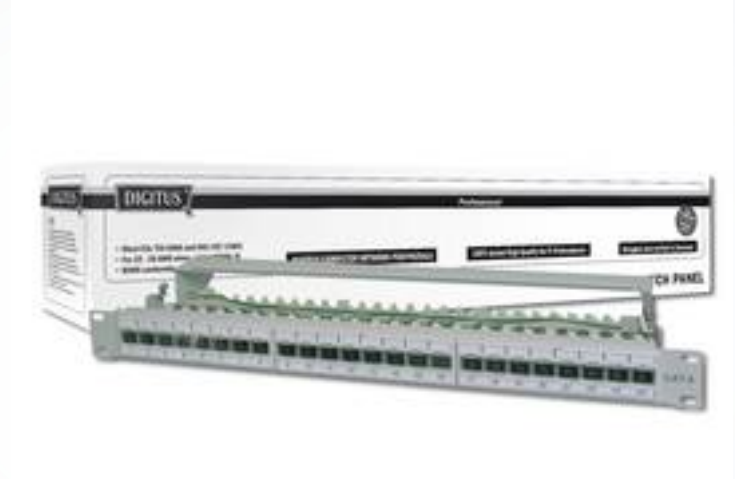


CAT 6a Class EA patch panel, shielded

DN-91624S-EA
EAN 4016032288428



Best performance and link quality for your network

CAT 6 Class EA for up to 500 MHz
Qualified for 10 GBit Ethernet
Shielded RJ45 sockets, 8P8C
Material housing: SECC, 1,5mm Electroalvanized, Cold-rolled Steel accc.
EN1.4301, UNS S30400, AISI 304 and LMSAD110
Suitable for 483mm (19") Rack Mount
360° Shield coverage
Dust protection shutter included
Cable installation via LSA strips, color coded according to EIA/TIA 568 A & B
Fixing option for cable ties, central ground connection
Complies with the 802.3at PoE+ and the 802.3af PoE standard
Category: CAT 6a
Ports: 24
Color: light grey, RAL 7035
Units: 1





Professional

