



POR-1200 Hardware Versie: 1

PoE-Versterker, Outdoor, Cascade, 802.3at PoE+

Extend the reach of your PoE-Plus devices

For system integrators looking for a professional solution to help extend their Outdoor PoE (802.3af/at) network, POR-1200 is the perfect accessory to increase your network performance.

Normal cable runs only reach 100 meters, but with POR-1200 installers can extend the PoE network performance up to 200 meters. Furthermore, you can triple your range or even more by daisy-chaining* multiple PoE repeaters.

* Maximum distance depends on the required Wattage of the PD.

Simple yet durable, no software required

As a PoE-Plus Repeater, POR-1200 receives all power from the Power Sending Equipment (PSE), such as a PoE-Plus switch. This means that POR-1200 uses no external power supply, making it the most flexible option for systems integrators looking for an easy, affordable solution to increase the distance to attached devices on a network. POR-1200 has 3 RJ-45 ports for easy deployment, 1 “IN” port that accepts the power and data for the first 100 meters, and 2 “OUT” ports for 1 PoE (power + data) and 1 non-PoE (data only) installation, that boosts and extends the device an additional 100 meters. With a durable metal housing, POR-1200 fits into any tight deployment.

Applications

POR-1200 is a long-ranged solution for deploying PoE IP Camera and any Fast Ethernet PoE PD powered by 802.3at PSE.

IP65-compliant

The POR-1200 is compliant to IP65, and is therefore weatherproof from snow, rain, storms, desert heat, etc. For deployment in any harsh weather conditions, this PoE Repeater is up to the challenge.



Key Features

- High Power Midspan PoE compliant to simplify deployment and installation
- Water bestendige IP65behuizing



- Stuurt Stroom over Ethernet (802.3af/at PoE) door naar extern apparaat
- Breidt PoE-verbinding met 100 meter uit
- Meerdere PoE-versterkers kunnen in serie worden geschakeld om het bereik te vergroten
- Eenvoudige Plug en Play-installatie, geen extra stroomvoorziening vereist

Specificaties

System Specifications

Standards & Protocols:

IEEE 802.3 10Base-T, Ethernet
IEEE 802.3u 100Base-TX, Fast Ethernet
IEEE 802.3x Ethernet Flow Control
IEEE 802.3af Power over Ethernet (PoE)
IEEE 802.3at Power over Ethernet Plus (PoE+)

Connectors and Cabling:

1 x 10/100Base-TX RJ-45 PoE Input Port
1 x 10/100Base-TX RJ-45 PoE Output Port
1 x 10/100Base-TX RJ-45 LAN Output Port

Power:

PoE Power Input: 44-57 Volt
Power Consumption: 2.5W (Max.)

Features

PoE:

IEEE 802.3af/at compliant

Environment

Temperature (°C):

Operating: 0°C ~ 50°C
Storage: 0°C ~ 70°C

Humidity (Non-condensing):

Storage: 5% to 95%
Operating: 5 ~ 95%

Physical Specifications

Dimensions (W x D x H mm):

195 x 160 x 95mm

Weight (g):

700 g

Enclosure:

Weatherproof IP65-rated housing

Others

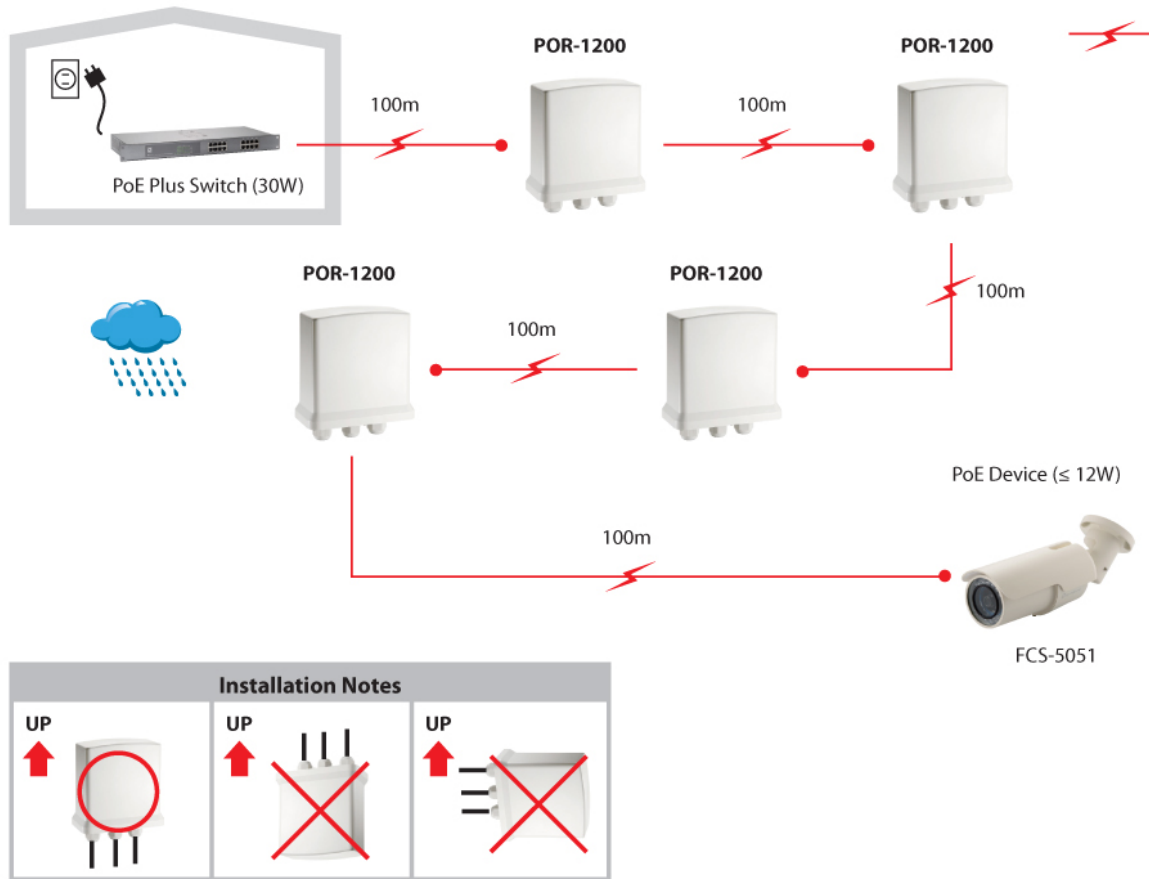
Approval and Compliance:

FCC Part 15, CE, RoHS

Deployment:

Wall/Pole mount

Schema



Order Information

POR-1200

Package Contents

POR-1200
Mounting Kit
Quick Installation Guide

No liability or responsibility for any errors or omissions in the content.
Specifications are subject to change without notice.
All mentioned brand names are registered trademarks and property of their owners.
Copyright © Digital Data Communications GmbH, Germany. All Rights Reserved.