

User's Manual

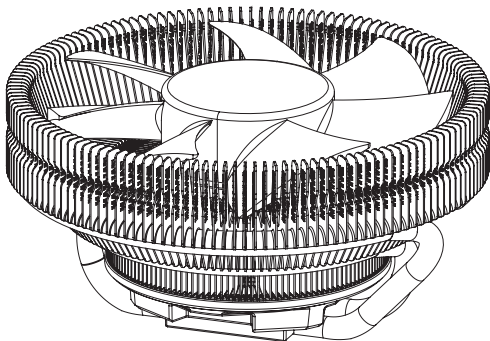
CNPS8900 Series

Intel Socket 1366/1156/1155/775 CPU

Core i7 Extreme	Core 2 Extreme	Pentium Dual-Core
Core i7	Core 2 Quad	Pentium D
Core i5	Core 2 Duo	Pentium 4
Core i3		Celeron D

AMD Socket FM1/AM3+/AM3/AM2+/AM2 CPU

Zambezi	Athlon II	Opteron Dual-Core
Llano	Athlon X2	Opteron
Phenom II	Athlon FX	Sempron
Phenom	Athlon	



To ensure safe and easy installation, please read the following precautions.

www.ZALMAN.com

1. Precautions

- 1) Avoid inserting objects or hands into the fan while it is in operation to prevent product damage and injuries.
- 2) Do not ingest the Thermal Grease, and avoid its contact with skin and eyes. If contact is made with skin, wash off with water. If ingested or irritation persists, seek medical attention.
- 3) To prevent possible injuries, gloves must be worn while handling this product.
- 4) Excessive force exerted on the fan may cause damage to the fan and/or system.
- 5) Use and keep product away from reach of children.
- 6) Check the components list and condition of the product before installation. If any problem is found, contact the retailer to obtain a replacement.
- 7) During transportation of the system, the cooler must be removed. Zalman is not responsible for any damages that occur during the transport of a system.
- 8) Product design and specifications may be revised to improve quality and performance.

Disclaimer) Zalman Tech Co., Ltd. is not responsible for any damages due to external causes, including but not limited to, improper use, problems with electrical power, accident, neglect, alteration, repair, improper installation, or improper testing.

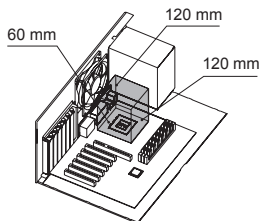
2. Specifications

Spec. \ Model		CNPS8900 Extreme	CNPS8900 Quiet
Material		Pure Copper and Aluminum	
Weight		400g	
Dimensions		120(L) X 120(W) X 60 (H)mm	
FAN	Bearing-Type	2 Ball-Bearing	Long Life Bearing
	RPM	1,250 ~ 2,800 RPM $\pm 10\%$	1,000 ~ 1,500 RPM $\pm 10\%$
	Noise Level	19.5~35 dBA $\pm 10\%$	19~25 dBA $\pm 10\%$
	Input Voltage	12V	

3. Installation Requirements

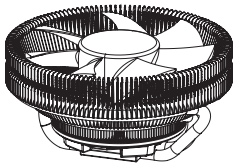
1) Space Requirements

The cooler's installation requires an unobstructed space of 120mm(width), 120mm(length), and 60mm(height), with the CPU as a central reference point. Please check if components such as ODDs and PSU protrude into the required space.

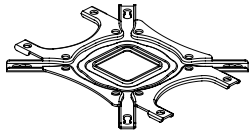


4.Components

1) Common Components



Cooler



Backplate



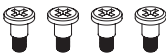
Side Caps



Nuts



User's Manual



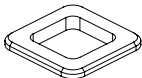
Bolts (Cooler)



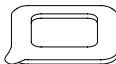
Bolts (Clip)



Extension Fan Cable



Loading Block

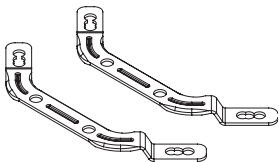


Double-sided Tape



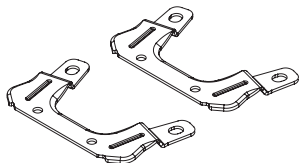
Thermal Grease
(ZM-STG2M)

2) Intel Components



Intel Clip
(Socket 1366/1156/1155/775)

3) AMD Components

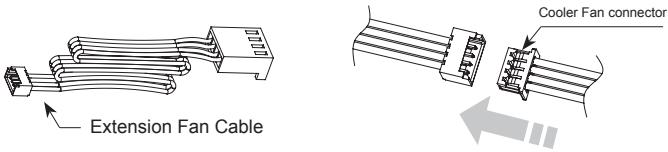


AMD Clip
(Socket FM1/AM3+/AM3/AM2+/AM2)

5. Installation

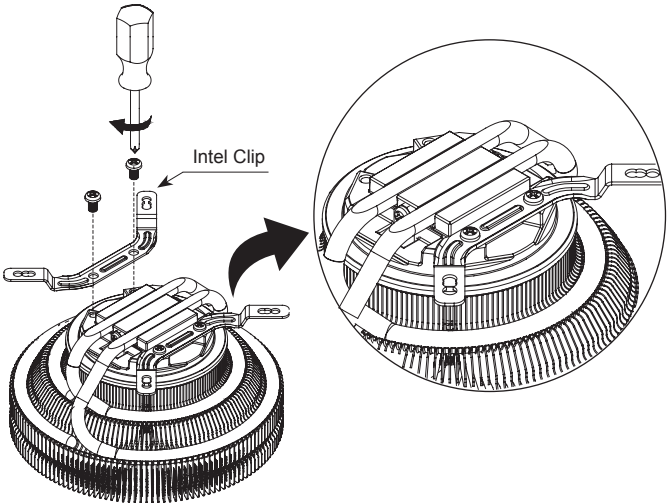
! Common

Connect the extension fan cable to the fan connector of cooler.

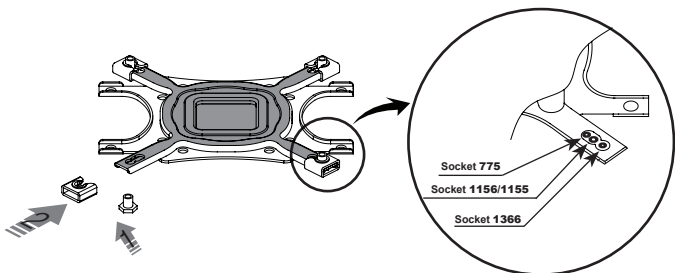


A. Intel Socket 1366/1156/1155/775 Installation

- ① Install the Intel clip to the base of cooler using the bolts (Clip).
Please make sure to put the curved part of clip toward the base as shown in the image.

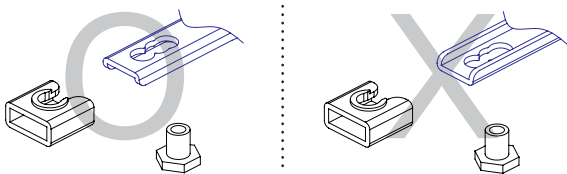


- ② Install the side cap to the Backplate according to a socket type.



⚠ Caution

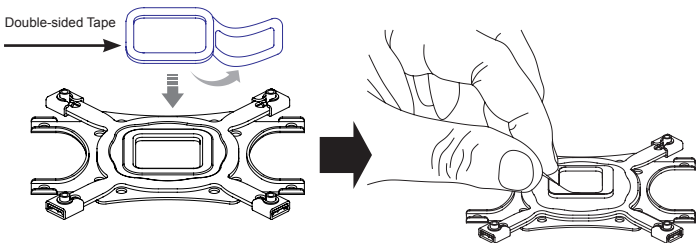
Please note the orientation of the Nuts and the Side Caps.



- ③ Socket 1366/1156/1155 Installation

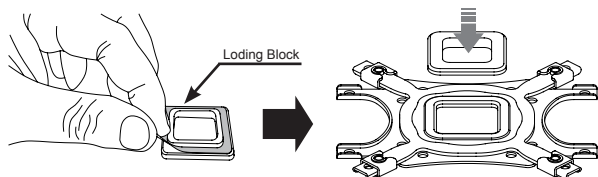
Attach Double-sided Tape to the center of the Backplate and remove the Double-sided Tape's Cover.

※ Installation of Socket 1366/1156/1155 does not require the Loading Block.

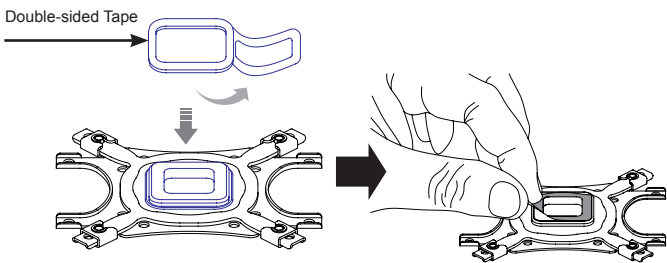


④ Socket 775 Installation

Remove the Sticker Cover from the Lower Tier of the Loading Block and attach to the Backplate.

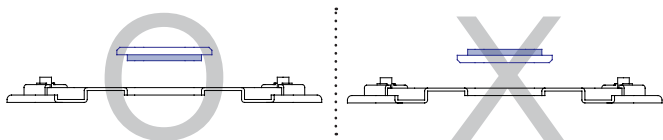


Attach Double-sided Tape to the Loading Block and remove the Double-sided Tape Cover.

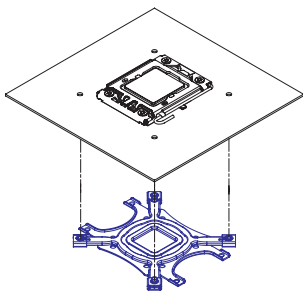


⚠ Caution

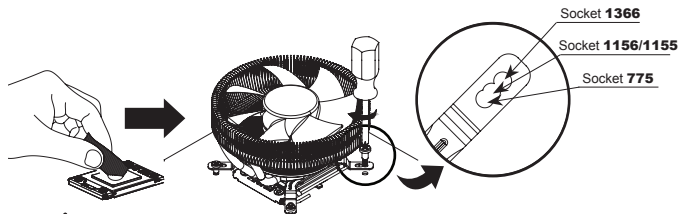
Please note of the orientation of the Loading Block's Installation.



- ⑤ Align the Backplate's holes with motherboard's clip support holes, attach it to the back side of the motherboard.

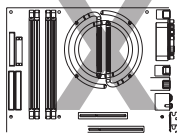
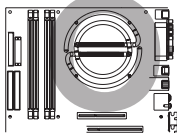


- ⑥ Spread the Thermal Grease on the CPU's surface and put the Cooler on the center of CPU and then fasten the Bolts (Cooler) to install the Cooler.

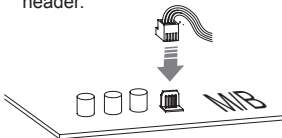


! Caution

In the case of Tower Enclosure, the direction of heatpipe to be horizontally as shown in the image. The vertical installation can affect the performance of heat dissipation.



- ⑦ Connect the cooler's 4-pin connector to the motherboard's CPU Fan header.

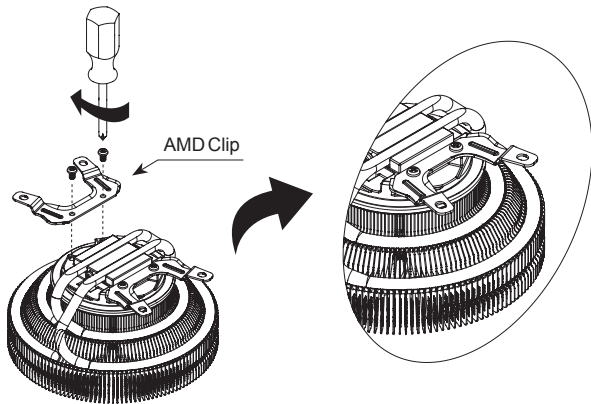


! Caution

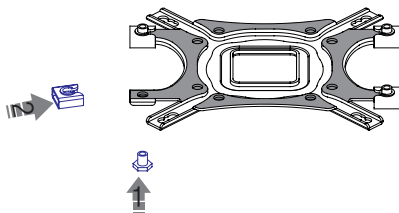
Please make sure that PWM Control Mode is activated in the motherboard's BIOS settings.

B. AMD Socket FM1/AM3+/AM3/AM2+/AM2 Installation

- ① Install the AMD Clip to the base of cooler using the bolts (Clip).
Please make sure to put the curved part of clip toward the base as shown in the image.



- ② Install the side cap to the Backplate.

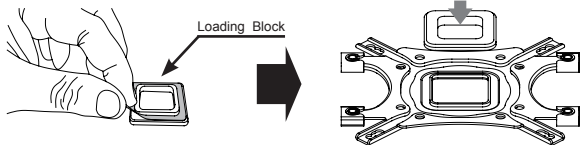


Caution

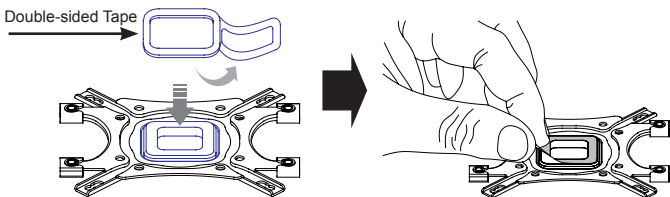
Please note of the orientation of Nuts and side Caps.



- ③ Remove the Sticker Cover from the Lower Tier of the Loading Block and attach to the Backplate.

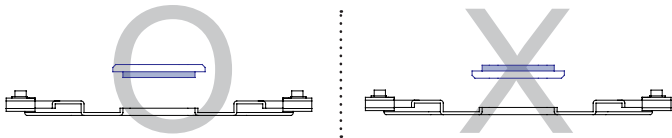


Attach Double-sided Tape to the Loading Block and remove the Double-sided Tape Cover

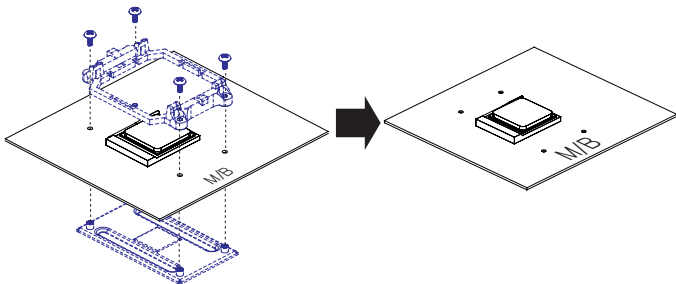


⚠ Caution

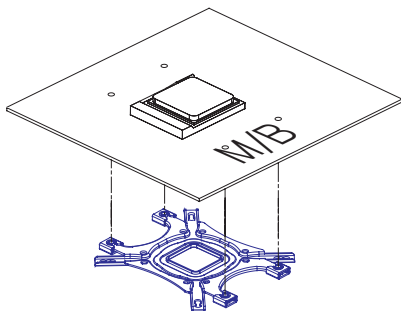
Please note of the orientation of the Loading Block's Installation.



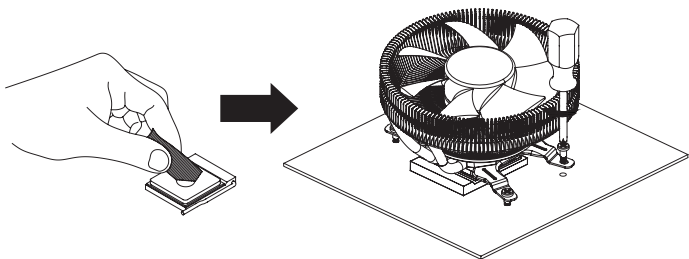
- ④ Take away the fixed Clip support from the motherboard.



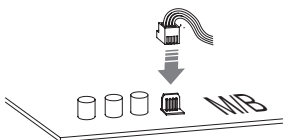
- ⑤ Align the Backplate's holes with motherboard's clip support holes, attach it to the back side of the motherboard.



- ⑥ Spread the Thermal Grease on the CPU's surface and put the Cooler on the center of CPU and then fasten the Bolts (Cooler) to install the Cooler.



- ⑦ Connect the cooler's 4-pin connector to the motherboard's CPU Fan header.



! Caution

Please make sure that PWM Control Mode is activated in the motherboard's BIOS settings.