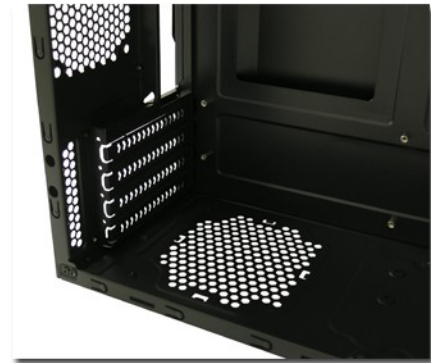




LC-POWER

Micro-ATX 2009MB



Case type:	Micro-ATX-Tower	Audio port:	HD Audio
Motherboard:	Micro-ATX, Mini-ITX	USB 3.0 port:	1
Drive bays 3,5" external:	1	USB 2.0 port:	3
Drive bays 5,25" external:	1	Barcode:	4260070125348
Drive bays 3,5" internal:	2	Manufacturer code:	LC-2009MB-ON
Drive bays 2,5" internal:	1 (o. 1x 3,5" + 2x 2,5" o. 0x 3,5" + 3x 2,5")	Case material:	metal
PCI slots:	4	Mark of conformity:	CE
Case fan standard/maximal:	0/3 (1x 80 + 1x 120 (lateral) + 1x 120 mm)	Case colour:	black
Case dimensions h x w x d:	358 x 190 x 385 mm (total) 345 x 170 x 340 mm (cage)	Front panel:	black / mirror finish
Graphic cards up to:	320 mm	Power supply integrated:	-
CPU cooler up to:	140 mm		
Weight (retail):	3,06 kg		
Weight (case):	2,45 kg		
Characteristics:	Incl. lateral ventilation slots on CPU level, black coating of the case inside		

Note: USB 3.0 - internal mainboard connector