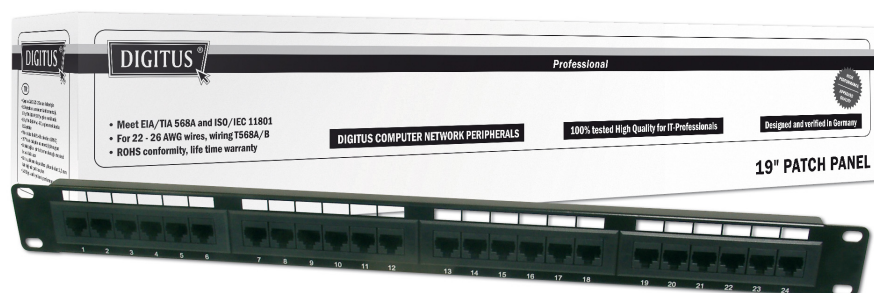


**Professional**

## CAT 6, Class E Patch Panel

**DN-91616U**  
**4016032241546**



## Best performance and link quality for your network

- Manufactured acc. Link Performance Class E, for up to 250MHz, EN 50173 and ISO/IEC 11801
- Shielded RJ45 jacks
- Cable installation via LSA strips, color codes based on EIA/TIA 568 A & B
- Fixing option for cable ties, central ground connection
- Suitable for 483mm (19") Rack Mount
- Material housing: SECC, 1,5mm Electrogalvanized, Cold-rolled Steel accc. EN1.4301, UNS S30400, AISI 304 and LMSAD110
- Category: CAT 6
- Ports: 16
- Color: black, RAL 9005
- Units: 1

