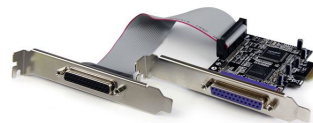


StarTech.com 2-poort PCI Express / PCI-E Parallele Adapter Kaart IEEE 1284 met Low Profile Bracket

Merk : StarTech.com

Artikelcode: PEX2PECP2



Productnaam : 2-poort PCI Express / PCI-E Parallele Adapter Kaart IEEE 1284 met Low Profile Bracket

StarTech.com 2-poort PCI Express / PCI-E Parallele Adapter Kaart IEEE 1284 met Low Profile Bracket
 StarTech.com 2-poort PCI Express / PCI-E Parallele Adapter Kaart IEEE 1284 met Low Profile Bracket.
 Hostinterface: PCIe, Output interface: Parallel. Kleur van het product: Meerkleurig. Chipset: ASIX/MosChip MCS9865. Ondersteunt Windows: Windows 10 Education, Windows 10 Education x64, Windows 10 Enterprise, Windows 10 Enterprise x64,.... Breedte: 19 mm, Diepte: 121 mm, Hoogte: 86 mm



Poorten & interfaces		Gewicht en omvang	
Hostinterface *	PCIe	Breedte	19 mm
Output interface *	Parallel	Diepte	121 mm
Type CardBus PCMCIA-slot	✘	Hoogte	86 mm
Parallele poort(en)	2	Gewicht	51 g
Design		Verpakking	
Intern *	✓	Gebruiksaanwijzing	✓
Kleur van het product	Meerkleurig	Breedte verpakking	144 mm
Kenmerken		Diepte verpakking	169 mm
Chipset	ASIX/MosChip MCS9865	Hoogte verpakking	30 mm
Eisen aan de omgeving		Gewicht verpakking	188 g
Bedrijfstemperatuur (T-T)	0 - 40 °C	Logistieke gegevens	
Temperatuur bij opslag	-20 - 60 °C	Code geharmoniseerd systeem (HS)	84733020
Relatieve vochtigheid in bedrijf (V-V)	5 - 85 procent	Overige specificaties	
		Overdrachtssnelheid	1,5 Mbit/s
		Connectiviteitstechnologie	Bedraad
		Mac-compatibiliteit	✘
		Compatibele besturingssystemen	Windows 8 (32/64), 7 (32/64), Vista(32/64), XP(32/64), 2000, Windows Sever 2008 R2, 2003 (32/64), Linux

Minimale systeemeisen

Ondersteunt Windows	Windows 10 Education, Windows 10 Education x64, Windows 10 Enterprise, Windows 10 Enterprise x64, Windows 10 Home, Windows 10 Home x64, Windows 10 Pro, Windows 10 Pro x64, Windows 2000, Windows 2000 Professional, Windows 7 Enterprise, Windows 7 Enterprise x64, Windows 7 Home Basic, Windows 7 Home Basic x64, Windows 7 Home Premium, Windows 7 Home Premium x64, Windows 7 Professional, Windows 7 Professional x64, Windows 7 Starter, Windows 7 Starter x64, Windows 7 Ultimate, Windows 7 Ultimate x64, Windows 8, Windows 8 Enterprise, Windows 8 Enterprise x64, Windows 8 Pro, Windows 8 Pro x64, Windows 8 x64, Windows 8.1, Windows 8.1 Enterprise, Windows 8.1 Enterprise x64, Windows 8.1 Pro, Windows 8.1 Pro x64, Windows 8.1 x64, Windows Vista Business, Windows Vista Business x64, Windows Vista Enterprise, Windows Vista Enterprise x64, Windows Vista Home Basic, Windows Vista Home Basic x64, Windows Vista Home Premium, Windows Vista Home Premium x64, Windows Vista Ultimate, Windows Vista Ultimate x64, Windows XP Home, Windows XP Home x64, Windows XP Professional, Windows XP Professional x64
---------------------	---

Technische details

Certificaten van naleving	RoHS
---------------------------	------



0065030848626



065030848626



4058829151492

Disclaimer. The information published here (the "Information") is based on sources that can be considered reliable, typically the manufacturer, but this Information is provided "AS IS" and without guarantee of correctness or completeness. The Information is only indicative and can be changed at any time without notification. No rights can be based on the Information. Suppliers or aggregators of this Information do not accept any liability with regard to the content of (web)pages and other documents, including its Information. The publisher of the Information can not be held liable for the content of 3rd party websites that are linking this Information or are linked to from this Information. You as the User of the Information are solely responsible for the choice and usage of this Information. You are not entitled to transfer, copy or otherwise multiply or distribute the Information. You are obliged to follow the directions of the copyright owner(s) with regard to the use of the Information. Exclusively Dutch law is applicable. With regard to price and stock data on the site, the publisher followed a number of starting points, which are not necessarily relevant for your private or business circumstances. Therefore, the price and stock data are only indicative and are subject to changes. You are personally responsible for the way you use and apply this information. As a user of the Information or sites or documents in which this Information is included, you will adhere to standard fair use including avoidance of spamming, ripping, intellectual-property violations, privacy violations, and any other illegal activity.