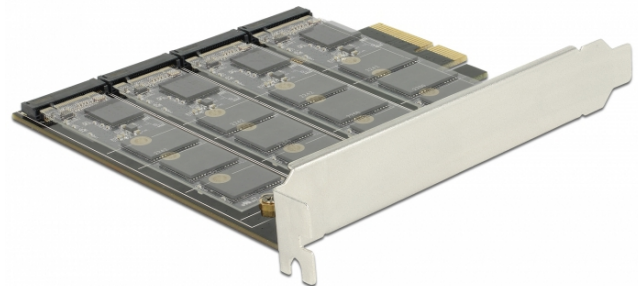


# Delock PCI Express Card > 4 x internal M.2 Key B with RAID

## Description

This PCI Express card by Delock expands the PC by four M.2 slots. Up to four M.2 SATA modules can be connected in format 2280, 2260, 2242, 2230 with this card. When using more than one SSD, there is the possibility to use different RAID level.


**M.2** RAID  
 function


## Specification

- Connectors:  
internal:  
4 x 67 pin M.2 key B slot  
1 x PCI Express x4
- Chipset: Marvell 88SE9230
- Interface: SATA
- Supports M.2 modules in format 2280, 2260, 2242 and 2230 with key B or key B+M based on SATA
- Maximum height of the components on the module: 1.5 mm, application of double-sided assembled modules supported
- Data transfer rate up to 6 Gb/s
- Supports RAID 0, 1, 10

Item no. 89888

EAN: 4043619898886

Country of origin: China

Package: Box



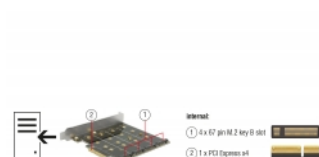
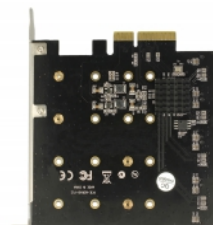
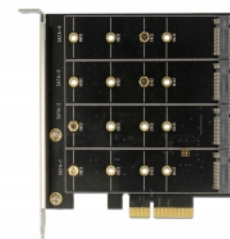
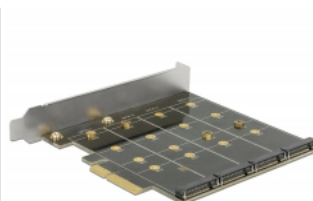
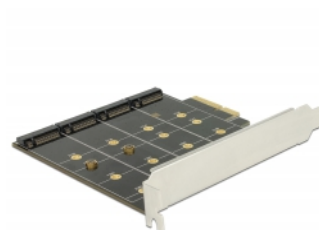
## System requirements

- Windows 8.1/8.1-64/10/10-64, ex Linux Kernel 2.6
- PC with one free PCI Express x4 / x8 / x16 / x32 slot

## Package content

- PCI Express card
- Driver CD
- User manual

## Images



**General**

Supported operating system: Windows 8.1 32-bit  
Windows 8.1 64-bit  
Windows 10 32-bit  
Windows 10 64-bit  
ex Linux Kernel 2.6.x  
ex Linux Kernel 4.1

Slot: SATA

Supported module: M.2 modules in format 2280, 2260, 2242 and 2230 with key B or key B+M based on SATA

Maximum height of the components on the module: 1.5 mm application of double-sided assembled modules supported

**Interface**

Internal: 1 x PCI Express x4  
4 x 67 pin M.2 key B slot

**Technical characteristics**

Chipset: Marvell 88SE9230

Data transfer rate: 6 Gb/s

RAID function: 10  
0  
1

**Physical characteristics**

Slot bracket: standard