

日本語

1. ヒートシンク背面にブルーの放熱パッドを貼り付けます。
 2. ヒートシンクをM.2 SSDの両端に合わせて貼り付けます。ネジ穴とコネクタを塞がないように気を付けます。
 3. シリコンバンドをヒートシンク両端に巻き、マザーボードへの装着に備えます。
 4. ご使用のM.2 SSDにアダプタが付いている場合、M.2 SSD背面にグレーの放熱パッドを取り付け、シリコンバンドを巻いてM.2 SSDとアダプタ間での熱伝導を確実にします。
- 異なる厚さのグレーの放熱パッドが2枚付属しています。片面M.2 SSD (裏側はコンポーネントなしで平坦) には1.5mm厚パッドを、両面M.2 SSD (両側にコンポーネントあり)には1mm厚パッドを使用します。
 - シリコン製放熱パッドは粘着性があるので、貼り付けたM.2 SSDから剥がす際はゆっくり慎重に行ってください。

한국어

1. 파란색 열전도 패드를 방열판의 뒷면에 부착합니다.
 2. 방열판을 M.2 SSD에 부착하고 방열판이 M.2 SSD의 양쪽 가장자리에 맞춰 정렬되었는지 확인합니다. 나사 구멍과 커넥터가 덮이지 않았는지 확인합니다.
 3. 메인보드 설치 준비로서 실리콘 밴드로 방열판의 반대쪽 가장자리를 감습니다.
 4. M.2 SSD를 어댑터에서 사용할 경우 M.2 SSD와 어댑터 사이의 열전도 접촉을 위해 M.2 SSD의 뒷면과 실리콘 밴드 사이에 회색 열전도 패드를 댁니다.
- 두께가 다른 회색 열전도 패드 두 개가 포함되어 있습니다. 단면 M.2 SSD(구성품을 제외한 평평한 뒷면)의 경우 1.5mm 두께의 패드를 사용하십시오. 양면 M.2 SSD (구성품을 포함한 양면)의 경우 1mm 두께의 패드를 사용하십시오.
 - 실리콘 열전도 패드는 끈적거리기 때문에 접착된 M.2 SSD를 떼어낼 때는 주의해서 천천히 떼어내십시오.



SILVERSTONE®
Designing Inspiration

M.2 SSD cooling kit TP02-M2



Double layer design enhances SSD cooling for stability and efficiency
Easy to apply and affix with silicone bands without damaging M.2 SSD
Aluminum alloy heatsink increases M.2 SSD cooling area
Efficient heat conduction pad for reducing temperature
Supports 2280 length M.2 SSD

www.silverstonetek.com

Warranty Information

This product has a limited 1 year warranty in North America and Australia.
For information on warranty periods in other regions, please contact your reseller or SilverStone authorized distributor.

Warranty terms & conditions

Product component defects or damage results from physical protection is covered under warranty.
Damage or damage due to the following causes is not covered under SilverStone's warranty:
1. Usage in accordance with instructions provided in this manual, with no misuse, abuse, or other negligence action.
2. Damage or damage to liquid damage, fire, earthquake, theft, and other natural disasters.
3. Product is not assembled, modified, or tampered. Components are disassembled or replaced.
4. Electrical modification and use beyond its design.
5. Use of damaged hardware from another source other than those listed above on our product page warranty.

1. Limited warranty: SilverStone Technology's maximum liability is limited to the current market value for the product (replacement value, including shipping and other charges) and is subject to the terms of the warranty agreement with the authorized distributor.
2. Limited warranty: SilverStone Technology's maximum liability is limited to the current market value for the product (replacement value, including shipping and other charges) and is subject to the terms of the warranty agreement with the authorized distributor.
3. Limited warranty: SilverStone Technology's maximum liability is limited to the current market value for the product (replacement value, including shipping and other charges) and is subject to the terms of the warranty agreement with the authorized distributor.
4. Limited warranty: SilverStone Technology's maximum liability is limited to the current market value for the product (replacement value, including shipping and other charges) and is subject to the terms of the warranty agreement with the authorized distributor.
5. Limited warranty: SilverStone Technology's maximum liability is limited to the current market value for the product (replacement value, including shipping and other charges) and is subject to the terms of the warranty agreement with the authorized distributor.

<http://www.silverstonetek.com>

1. This is a printed proof of original purchase of a product by a named natural person. It is not valid for the use of shipping or otherwise requesting the product to SilverStone authorized distributors. SilverStone authorized distributors will bear the cost of shipping or otherwise requesting the product to other SilverStone authorized distributors, but they may not send the product, you may be held a Retail Merchant's Authorized Return (RMAR) number from SilverStone. SilverStone warranty information will be posted on SilverStone's official website. <http://www.silverstonetek.com>

有害有害物質/元素及其化學含量表						
部件名稱	鉛 (Pb)	汞 (Hg)	鎘 (Cd)	六价鉻 (Cr(VI))	多環聯苯 (PBBs)	多環二苯基 (PBDEs)
導熱貼	○	○	○	○	○	○
導熱矽片	○	○	○	○	○	○
包材	○	○	○	○	○	○
說明書	○	○	○	○	○	○

○ 表示該有害物質在該部件所有材料中的含量符合RoHS 2.0 (2015年) 標準規定之限量要求。
× 表示該有害物質在該部件材料中的含量不符合RoHS 2.0 (2015年) 標準規定之限量要求。
本零件含有物料符合歐盟RoHS 2.0 標準。請參閱2011/65/EC 指令之內容。

產品合格證
檢驗員: 楊明
生产日期: 見產品標碼

Additional info & contacts

For North America (support@silverstonetek.com)
SilverStone Technology in North America may repair or replace defective product with refurbished product that is not new but has been functionally tested. Replacement product will be warranted for remainder of the warranty period or thirty days, whichever is longer. All products should be sent back to the place of purchase if it is within 30 days of purchase, after 30 days, customers need to initiate RMA procedure with SilverStone Technology in USA by first downloading the "USA RMA form for end-users" form from the below link and follow its instructions. <http://www.silverstonetek.com/contactus.php>

For Australia only (support@silverstonetek.com)
Our goods come with guarantees that cannot be excluded under the Australian Consumer Law. You are entitled to a replacement or refund for a major failure and for compensation for any other reasonably foreseeable loss or damage. You are also entitled to have the goods repaired or replaced if the goods fail to be of acceptable quality and the failure does not amount to a major failure. Please refer to above "Warranty terms & conditions" for further warranty details.

SilverStone Technology Co., Ltd. 12F No. 168 Jiankang Rd., Zhonghe Dist., New Taipei City 235 Taiwan R.O.C. +886-2-8228-1238 (standard international call charges apply)
For Europe (support@silverstonetek.de)
For all other regions (support@silverstonetek.com)

Specifications

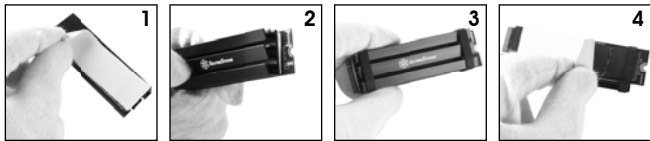
Model No	SST-TP02-M2
Material	Aluminum, silicone
Color	Black
Thermal pad conductivity	1.5W/m.k
Thermal pad thickness	1.0mm, 1.5mm
Operating temperature	-20°C ~ 180°C
M.2 size support	2280 (22mm x 80mm)
Net Weight and dimension	Heatsink : 70mm (W) x 10mm (H) x 20mm (D), 1.61g Blue Pad : 70mm (W) x 1mm (H) x 20mm (D), 3.25g Gray Pad 1 : 60mm(W) X 1mm(H) X 20mm(D), 2.8g Gray Pad 2 : 60mm(W) X 1.5mm(H) X 20mm(D), 3.7g

* Includes two gray colored thermal pads with different thickness. For single sided M.2 SSD (flat back without component), please use 1.5mm thick pad; for double sided M.2 SSD (both sides with components), please use 1mm thick pad.
** If one gray pad is not thick enough to make contact with both M.2 SSD and your motherboard or adapter card, then you should carefully attach both included pads in your TP02-M2 kit together (make sure to avoid trapping air bubbles between them). Your goal is to create enough thickness to enable solid contacts so the heat from M.2 SSD can be transferred through to the motherboard or adapter card.
*** If the M.2 slot on the motherboard is situated next to a PCIe slot, the height of the TP02-M2's heat sink may interfere with graphic card or expansion card installation, we recommended installing TP02-M2 onto other available M.2 slots on the motherboard to avoid interference issue.

Packaging contents

- TP02-M2 heatsink x 1
- Gray thermal pad x 2
- Blue thermal pad x 1
- Silicone band x 2
- Manual x 1

Installation



ENGLISH

1. Stick the blue thermal pad on the back of heatsink
2. Stick the heatsink onto the M.2 SSD and make sure the heatsink is aligned to both edges of M.2 SSD. Please make sure the screw hole and connector is not covered.
3. Wrap the silicone bands onto opposite edges of heatsink in preparation for motherboard install.
4. If your M.2 SSD is used on an adapter, apply the grey thermal pad on to the back of M.2 SSD and between silicone bands for heat transfer contact between M.2 SSD and the adapter.
 - Two gray colored thermal pads with different thickness are included. For single sided M.2 SSD (flat back without component), please use 1.5mm thick pad; for double sided M.2 SSD (Both sides with components), please use 1mm thick pad.
 - Because the silicone thermal pad is sticky, please be slow and careful when attempting to remove it from an attached M.2 SSD.

DEUTSCH

1. Kleben Sie das blaue Wärmeepad auf die Rückseite des Kühlkörpers
2. Setzen Kühlkörper auf die M.2-SSD und stellen Sie sicher, dass der Kühlkörper an beiden Kanten der M.2-SSD ausgerichtet ist. Bitte stellen Sie sicher, dass Schraubenloch und Anschluss nicht abgedeckt sind.
3. Wickeln Sie die Silikonbänder zur Vorbereitung der Motherboard-Installation um die gegenüberliegenden Kanten des Kühlkörpers.
4. Falls Ihre M.2-SSD an einem Adapter verwendet wird, bringen Sie das graue Wärmeepad an der Rückseite der M.2-SSD und zwischen Silikonbändern an, damit ein Wärmeleitkontakt zwischen M.2-SSD und Adapter besteht.
 - Enthält zwei graue Wärmeepads mit unterschiedlicher Dicke. Bitte verwenden Sie bei einseitigen M.2-SSDs (glatte Rückwand ohne Komponente) das 1,5 mm dicke Polster und bei doppelseitigen M.2-SSDs (beide Seiten mit Komponenten) das 1,0 mm dicke Polster.
 - Da das Silikon-Wärmeepad klebt, entfernen Sie es bitte langsam und vorsichtig von einer befestigten M.2-SSD.

FRANÇAIS

1. Collez la plaquette thermique bleue à l'arrière du dissipateur thermique
2. Collez le dissipateur thermique sur le SSD M.2 et assurez-vous que le dissipateur thermique est aligné sur les deux bords du SSD M.2. Veuillez vous assurer que le trou de vis et le connecteur ne sont pas couverts.
3. Entroulez les bandes en silicone sur les bords opposés du dissipateur thermique en préparation de l'installation de la carte mère.
4. Si votre SSD M.2 est utilisé sur un adaptateur, appliquez la plaquette thermique grise sur l'arrière du SSD M.2 et entre les bandes en silicone pour le contact du transfert thermique entre le SSD M.2 et l'adaptateur.
 - Deux plaquettes thermiques de couleur grise avec des épaisseurs différentes sont incluses. Pour les SSD M.2 simple face (dos plat sans composant), veuillez utiliser la plaquette de 1,5 mm d'épaisseur; pour les SSD M.2 double face (les deux faces avec des composants), veuillez utiliser la plaquette de 1 mm d'épaisseur.
 - Vu que la plaquette thermique en silicone est collante, veuillez procéder lentement et soigneusement en essayant de la retirer d'un SSD M.2 fixe.

ESPAÑOL

1. Pegue la almohadilla térmica azul en la parte trasera del disipador térmico
2. Pegue el disipador térmico al SSD M.2 y asegúrese de que el disipador está alineado con ambos extremos del SSD M.2. Asegúrese de que el agujero del tornillo y el conector no quedan cubiertos.
3. Envuelva las bandas de silicona en bordes opuestos del disipador térmico como preparación para instalar en la placa base.
4. Si su SSD M.2 se usa en un adaptador, aplique la almohadilla térmica gris en la parte trasera del SSD M.2 y entre bandas de silicona para transferir el calor por contacto entre el SSD M.2 y el adaptador.
 - Se incluyen dos almohadillas térmicas de color gris con diferentes grosores. Para los SSD M.2 de una sola cara (trasera negra sin componentes), por favor use la almohadilla de 1,5mm de grosor; para los SSD M.2 de dos caras (ambos lados con componentes), por favor use la almohadilla de 1mm de grosor.
 - Ya que la almohadilla térmica de silicona es pegajosa, por favor sea lento y cuidadoso cuando intente retirarla de un SSD M.2 al que la haya pegado.

ITALIANO

1. Attaccare il pad termico blu sul retro del dissipatore di calore
2. Attaccare il dissipatore di calore sull'SSD M.2 e assicurarsi che il dissipatore di calore sia allineato a entrambi i bordi dell'SSD M.2. Assicurarsi che il foro per viti e il connettore non siano coperti.
3. Avvolgere le fascette in silicone sui bordi opposti del dissipatore di calore in preparazione dell'installazione della scheda madre.
4. Se si utilizza l'SSD M.2 su un adattatore, applicare il pad termico grigio sul retro dell'SSD M.2 e tra le fascette in silicone per il contatto di trasferimento di calore tra SSD M.2 e adattatore.
 - Sono inclusi due pad termici grigi di diverso spessore. Per SSD M.2 a lato singolo (nero piatto senza componente), utilizzare un pad da 1,5 mm; per SSD M.2 a lato doppio (entrambi i lati con componenti), utilizzare un pad da 1 mm.
 - Poiché il pad termico in silicone è appiccicoso, rimuoverlo lentamente e con cura da un SSD M.2 collegato.

РУССКИЙ

1. Наклейте синюю термопрокладку на заднюю поверхность радиатора.
2. Прикрепите радиатор к M.2 SSD и убедитесь, что радиатор выровнен по обоим краям M.2 SSD. Пожалуйста, убедитесь, что крепежные отверстия и разъемы не перекрыты.
3. Закрепите силиконовые наклейки на противоположные края радиатора при подготовке к установке на материнскую плату.
4. Если вы используете накопитель M.2 SSD вместе с адаптером, нанесите серую термопрокладку на заднюю часть M.2 SSD и между силиконовыми наклейками для контакта и лучшей теплопередачей между M.2 SSD и адаптером.
 - В комплект две серые термопрокладки различной толщины. Для одностороннего M.2 SSD (плоская задняя часть без компонентов), пожалуйста, используйте прокладку толщиной 1,5 мм; для двухстороннего M.2 SSD (компоненты с обеих сторон), пожалуйста, используйте прокладку толщиной 1 мм.
 - Поскольку силиконовые термопрокладки являются липкими, будьте осторожны при попытке отклеить их от накопителя M.2 SSD.

ไทย

1. แปะแผ่นซิลิโคนสีฟ้าเข้ากับก้านด้านล่างของตัวฮีตซิงค์
2. แปะตัวฮีตซิงค์ลงบน M.2 SSD และให้แนวใจว่าตัวฮีตซิงค์กับขอบทั้งสองด้านของตัว M.2 SSD, ห้ามใจว่าที่รูสกรูหรือเลขาที่เชื่อมต่อไปไดมอนด์
3. วัลปลายทั้งสองข้างของฮีตซิงค์ด้วยแถบยางรัดเพื่อเตรียมติดตั้งลงบนเมนบอร์ด
4. หากคุณใช้ M.2 SSD บนการ์ดแปลง, ให้ใช้แผ่นซิลิโคนสีเทาปะด้านหลังของ M.2 SSD ระหว่างช่องแถบยางรัดเพื่อการถ่ายเทความร้อนระหว่าง M.2 SSD และการ์ดแปลง
 - แผ่นซิลิโคนสีเทาทั้งสองแผ่นนี้หนาจะมีความหนาที่แตกต่างกัน สำหรับ M.2 SSD แบบหน้าเดียว (ด้านหลังเรียบไม่มีปลอกกรดดัด), กรุณาใช้แผ่นซิลิโคนความหนา 1.5 มม, สำหรับ M.2 SSD แบบสองด้าน (มีปลอกกรดดัดทั้งสองด้าน), กรุณาใช้แผ่นซิลิโคนความหนา 1 มม.
 - เนื่องจากแผ่นซิลิโคนนี้มีความเหนียว กรุณาใช้ความระมัดระวังและดึงอย่างช้า ๆ เมื่อต้องการนำแผ่นซิลิโคนที่แปะอยู่บน M.2 SSD ออก

繁體中文

1. 將藍色散熱貼片黏妥至金屬散熱裝甲背面
2. 將散熱裝甲黏合至 M.2 SSD, 確認對齊邊緣, 注意勿蓋過螺絲鎖固孔
3. 將橡膠圈環固定於蓋甲兩側邊緣
4. 將灰色散熱貼片黏貼於 M.2 SSD 背面、兩側橡膠圈環的中間, 並安裝至主機板或轉接介面卡。
 - 內附兩組厚度貼片, 單面顆粒的 M.2 SSD (背面平整無元件), 請使用較厚 (1.5mm) 的貼片; 若為雙面顆粒 (兩面皆有元件) 則使用較薄 (1mm) 的貼片
 - 因散熱貼片具有黏性, 若需移除, 請小心操作避免損傷硬碟

簡體中文

1. 將藍色散熱貼片黏妥至金屬散熱裝甲背面
2. 將散熱裝甲黏合至 M.2 SSD, 確認對齊邊緣, 注意勿蓋過螺絲鎖固孔
3. 將橡膠圈環固定於蓋甲兩側邊緣
4. 將灰色散熱貼片黏貼於 M.2 SSD 背面、兩側橡膠圈環的中間, 並安裝至主機板或轉接介面卡。
 - 內附兩組厚度貼片, 單面顆粒的 M.2 SSD (背面平整無元件), 請使用較厚 (1.5mm) 的貼片; 若為雙面顆粒 (兩面皆有元件) 則使用較薄 (1mm) 的貼片
 - 因散熱貼片具有黏性, 若需移除, 請小心操作避免損傷硬碟