



ICY BOX®

USER'S MANUAL

8x HDD Enclosure with single mode functions
 USB 3.1 Gen 2 / Type-C™
 For 2.5" and 3.5" SATA HDD/SSD

Cleaning the device

- IMPORTANT** Harmful cleaning agents
 Scratches, discolouration, damage caused by moisture or short circuit in the device
- Disconnect the device prior to cleaning
 - Aggressive or intense cleaning agents and solvents are unsuitable
 - Make sure there is no residual moisture after cleaning
 - We recommend cleaning devices using a dry, anti-static cloth

Disposing of the device

IMPORTANT Environmental pollution, unsuitable for recycling
 Potential environmental pollution caused by components, recycling circle interrupted

This icon on product and packaging indicates that this product must not be disposed of as part of domestic waste. In compliance with the Waste Electrical and Electronic Equipment Directive (WEEE) this electrical device and potentially included batteries must not be disposed of in conventional, domestic waste or recycling waste. If you would like to dispose of this product and potentially included batteries, please return it to the retailer or your local waste disposal and recycling point.

If you have any questions, please do not hesitate to contact our support at support@raidsonic.de or visit our website at www.raidsonic.de.

Brief Notes

- **Operation System**
 Windows 10 / Windows 7 / 8.1
 mac OS® X 10.12 or later
- **Operation Environment**
 Temperature 0 ~ 40 °C Humidity 90% RH
- **Hot-plug for USB Type-C™ interface**
 Supports USB 3.1 Gen 2 10 Gbit/s transfer speed, and also backward supports USB 3.0/2.0 interface for older PC and MAC systems.
- **USB 2.0 / 3.0 / 3.1 compatible ***
 *Additional cable required, cable converter adapters not recommended
- **Smart Fan**
 Smart fan controlled by the built-in thermal sensor and it comes with 2 modes (auto / manual) and 3 levels of speed:

Level 1:	Low	below 45°	1000 rpm ~ 1400 rpm
Level 2:	Medium	45°C ~ 54°C	1500 rpm ~ 1900 rpm
Level 3:	High	over 55°C	2400 rpm ~ 2800 rpm

Packaging content

Main device x1, Quick installation guide x1, Screws for 2.5" HDD x16
 Screws for 3.5" HDD x32, HDD handle x16, bracket x8, screw driver x1 / key x2, USB 3.1 Gen 2 Type-C™ to C cable, x1 power cord

Sync Button

Make sure enclosure is connected to a computer that is ON, by USB. If not, enclosure will just turn off.
 Set the power Sync mode to your preference.

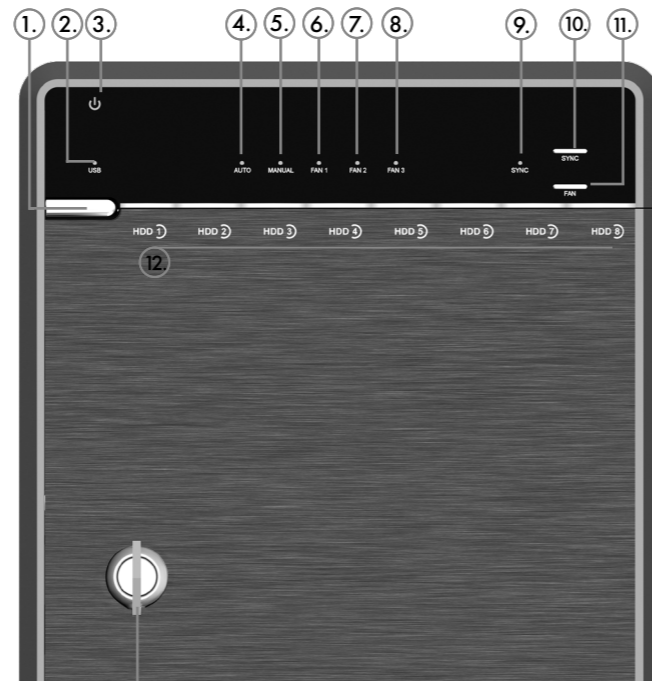
*These are the Power Sync modes:

Orange LED
 When the PC is turned off, the enclosure will go into sleeping mode. When you turn on the PC, the enclosure will turn on automatically

OFF (no LED)
 No Power sync, enclosure stays on when you turn PC off.

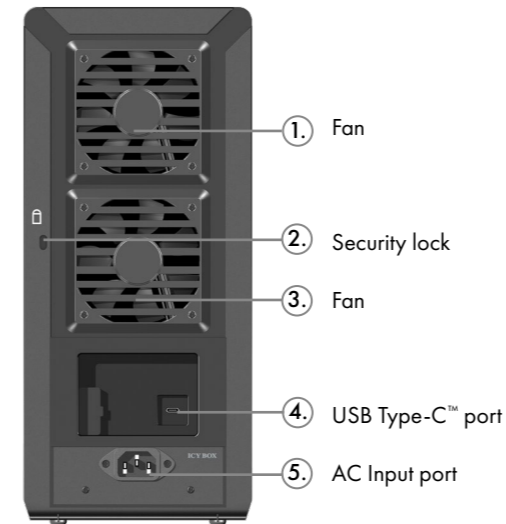
Understanding Interface

Front View



- Power button**
 It needs to be pressed and held for 3 seconds to power off.
This design prevents accidental power off.
- USB Status**
 Link interface use
- Power indicator status**
 Blue - Power on
 Orange - Sleep mode
- Smart fan automatic mode**
- Smart fan manual mode**
- Fan speed / level 1**
- Fan speed / level 2**
- Fan speed / level 3**
- Synchronization mode LED**
 LED Orange When the PC is off, the device goes to sleep mode.
 LED OFF Synchronization is off.
- Synchronization mode button**
 Switch power Sync mode (no power Sync / Hibernate)
 It needs to be pressed and held for 3 seconds to power off.
This design prevents accidental power off.
- Smart fan button**
 Controls auto & manual modes and fan speed from level 1 to level 3.
- HDD Access**
 HDD1 / HDD2 / HDD3 / HDD4
 HDD5 / HDD6 / HDD7 / HDD8 Status
 Blue Flashing light = Read
- Key slot**

Rear View

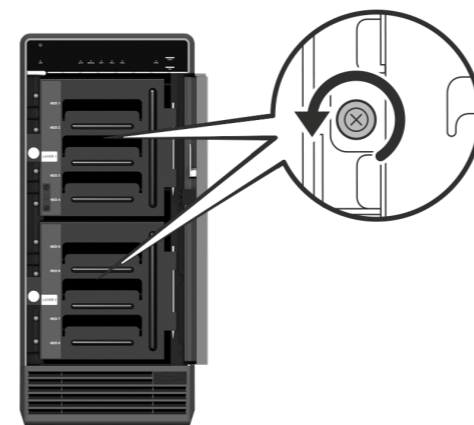


Quick Installation Guide

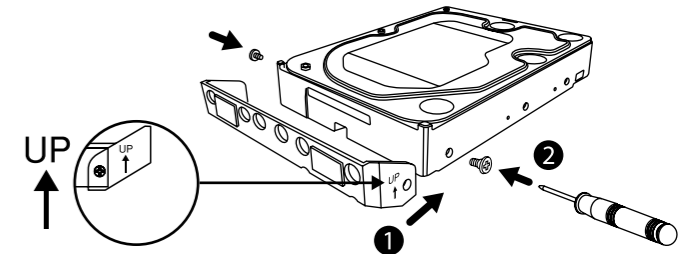
1. Unlock the cover with the key supplied and press the circular depression to open the cover



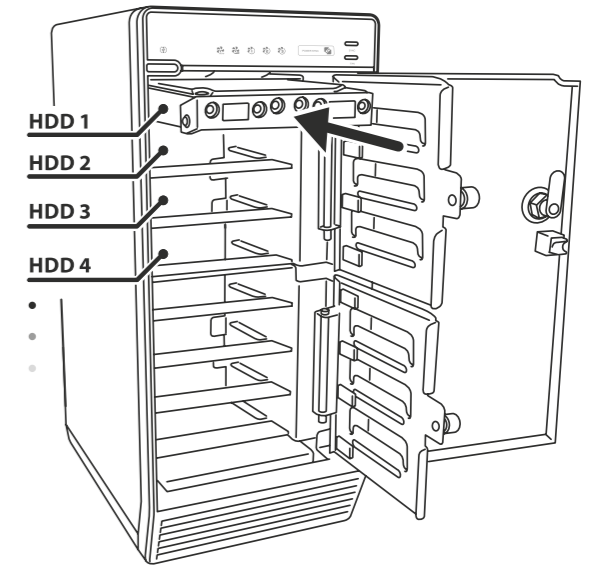
2. Release the inner covers by turning the screws counter clockwise



3. Please use the provided handles to secure the 8 HDDs with screws-
Quick Installation Guide for 3,5" HDD, Installation for 2,5" will follow up

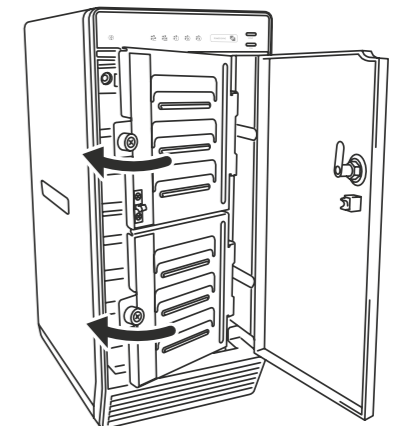


4. Install the HDDs from up to down.



Make sure the HDD is securely installed first at all times.
 Otherwise the PC may not recognize the device.

5. Close and secure the covers.



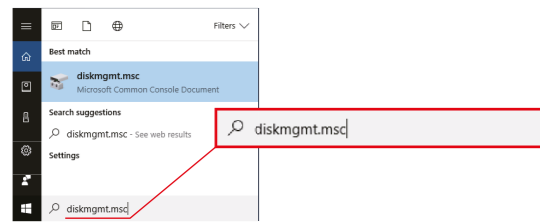
6. Connect the power cord to the device, plug in USB Type-C™ cable in the rear

Initialization

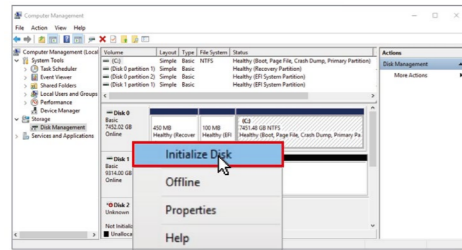
Windows®

If the HDD is uninitialized, you may have to initialize it by doing steps as followed:

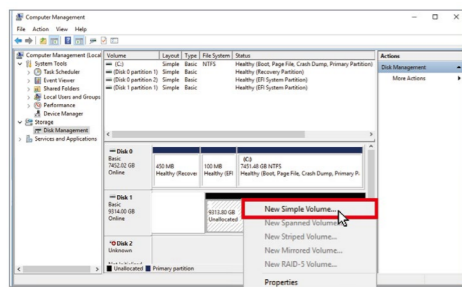
- At first click **Start -> Execute** on your PC and key in **diskmgmt.msc** After that please press the **RETURN** key.



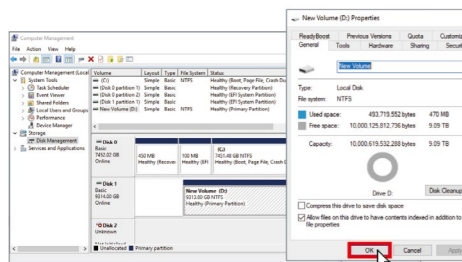
Start disk initialization



Create new partition and format disk

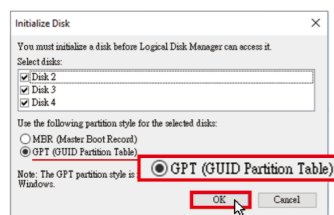


HDD format completed

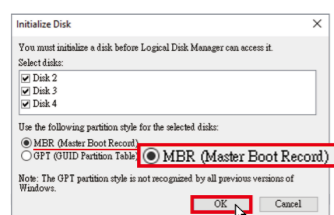


Start disk initialization

Hint: Activate GPT if the total capacity is more than 2TB



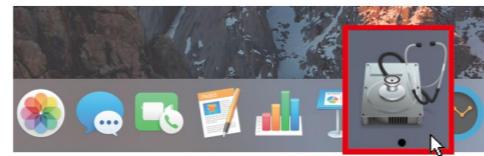
Hint: Activate MBR if total volume is less than 2TB



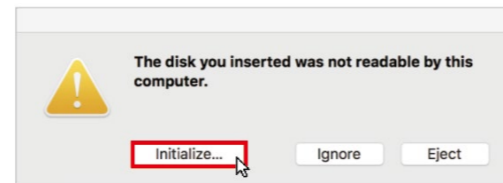
mac OS®

If the HDD is uninitialized, you may have to initialize it by doing steps as followed

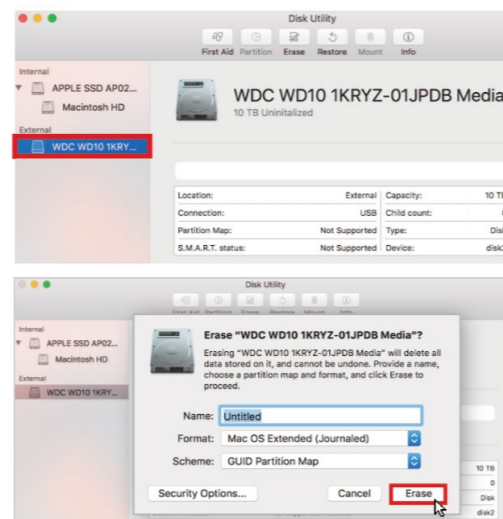
- Click Disk Utility icon



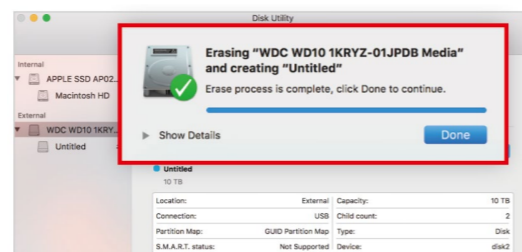
Initialize HDD



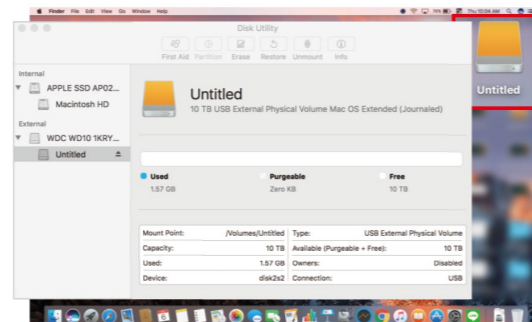
Click Erase



HDD format in process

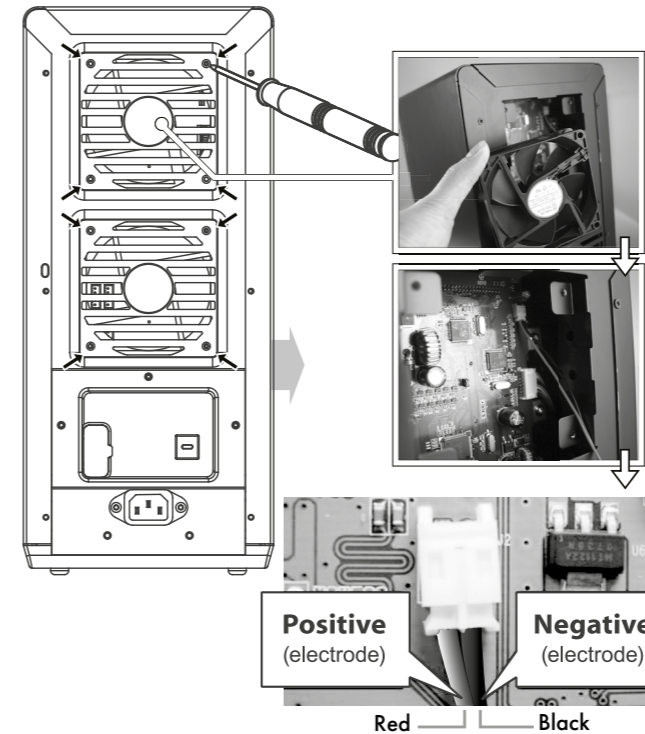


Format completed



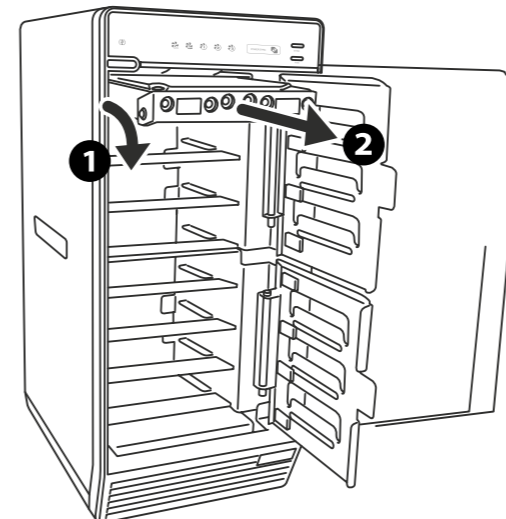
Troubleshooting

- If the device takes too long to detect the HDD, please check if the HDD is installed correctly.
- If there is noise with the fan, unscrew and take out the fan cover, pull out the power cord, clean the fan and assemble it back.
- For Macintosh users, under MAC OSX 10.12 or later, it's strongly recommended not to have the same name for all the HDDs.
- If the noise is still present, change the device with another fan of size 80x80x20 mm 2 pins. Otherwise send the device back to the retail store.
- If the fan stops working, do not dismantle it. Please send back to the retail store immediately.



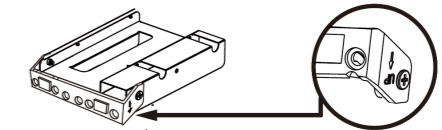
- Operation Environment:
Temperature 0°C ~ 60°C
Humidity 0% ~ 90% R.H.

- To take the HDD out from the device, slightly press down the handle and pull it out.

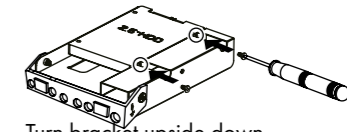


2,5" Bracket - Assembly

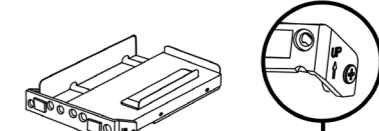
- Take bracket out of the chassis and lay the handle side facing backward and ready to assemble the SSD/HDD to it.



- Insert the 2.5" HDD/SSD into the carrier with the 4 screw holes at the top and the SATA connector at the back using the two metal pins on the left side and fasten them with two screws as shown below:



- Turn bracket upside down.



- Insert bracket with HDD/SSD assembled as step 2 & step 3 into the chassis.

- Close door and you're ready to use

Please read carefully the following information to prevent injuries, damage to material and device as well as data loss:

Warning levels
Signal words and safety codes indicate the warning level and provide immediate information in terms of the probability of occurrence as well as the type and severity of the consequences if the measures to prevent hazards are not complied with.

DANGER Warns of a **directly** hazardous situation causing **death or serious injury**.

WARNING Warns of a **potentially** hazardous situation that **may** cause death or serious injury.

CAUTION Warns of a **potentially** hazardous situation that **may** cause minor injury.

IMPORTANT Warns of a **potential** situation that **may** cause material or environmental damage and disrupt operative processes.

Risk of electrical shock

WARNING **Contact with parts conducting electricity**
Risk of death by electrical shock

- Read the operating instructions prior to use
- Make sure the device has been de-energised prior to working on it
- Do not remove contact protection panels
- Avoid contact with conducting parts
- Do not bring plug contacts in contact with pointed and metal objects
- Use in intended environments only
- Operate the device using a power unit meeting the specifications of the type plate only!
- Keep the device/power unit away from humidity, liquid, vapour and dust
- Do not modify the device
- Do not connect the device during thunderstorms
- Approach specialist retailers if you require repairs

Hazards during assembly (if intended)

CAUTION **Sharp components**
Potential injuries to fingers or hands during assembly (if intended)

- Read the operating instructions prior to assembly
- Avoid coming into contact with sharp edges or pointed components
- Do not force components together
- Use suitable tools
- Use potentially enclosed accessories and tools only

Hazards caused by a development of heat

IMPORTANT **Insufficient device/power unit ventilation**
Overheating and failure of the device/power unit

- Prevent externally heating up components and ensure an exchange of air
- Do not cover the fan outlet and passive cooling elements
- Avoid direct sunlight on the device/power unit
- Guarantee sufficient ambient air for the device/power unit
- Do not place objects on the device/power unit

Hazards caused by very small parts and packaging

WARNING **Risk of suffocation**
Risk of death by suffocation or swallowing

- Keep small parts and accessories away from children
- Store/dispose of plastic bags and packaging in an area that is inaccessible to children
- Do not hand over small parts and packaging to children

Potential data loss

IMPORTANT **Data lost during commissioning**
Potentially irreversible data loss

- Always comply with the information in the operating instructions/quick installation guide
- Exclusively use the product once the specifications have been met
- Back up data prior to commissioning
- Back up data prior to connecting new hardware
- Use accessories enclosed with the product