

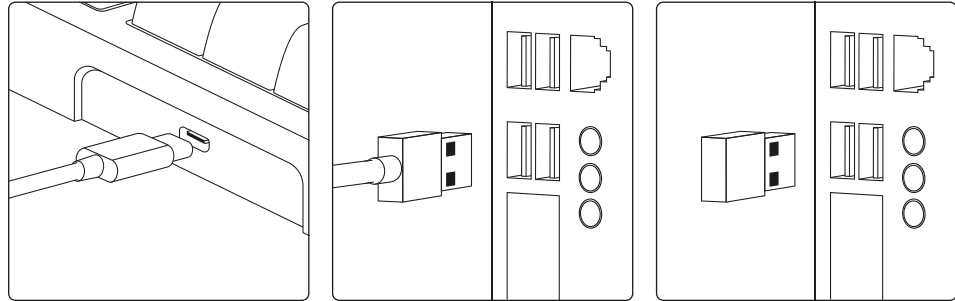
USER MANUAL



English

How to Connect

The keyboard can be used with personal computers equipped with USB ports.



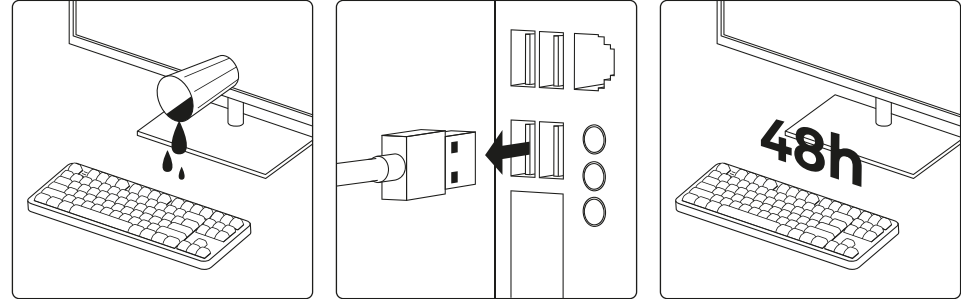
It is better to connect the keyboard when the computer is turned off.



WE STRONGLY ADVISE AGAINST CHARGING THE
DEVICE DIRECTLY FROM THE POWER GRID.

Care and Safety

If for any reason you spilled liquid on the keyboard, **IMMEDIATELY** shut it down and dry it for 48 hours. It is not recommended to use high temperatures for drying keycaps and other plastic parts.



It is better to connect the keyboard when the computer is turned off.

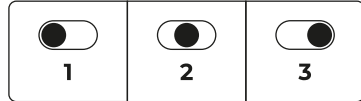


Although this does not impact the warranty, please
make sure you take good care of your keyboard.

2.4G/Bluetooth Switching (for wireless models)

Three-Position Power Switch Modes:

- Bluetooth Mode:** Toggle switch to the right.
- Wired Mode:** Toggle switch to the middle.
- 2.4G Mode:** Toggle switch to the left.



Bluetooth Device Selection Keys

Fn+1/2/3: Connect to Bluetooth Device No. 1/2/3

Wired Mode Operation

- The toggle switch must be in the middle position to enable wired mode.
- When the Type-C cable is plugged in while the switch is in the wireless position, the device will only charge and will not switch to wired mode automatically.

Bluetooth Pairing Instructions (for wireless models)

- Set the toggle switch to the right to enable Bluetooth mode.
- Use Fn+1/2/3 to switch between Bluetooth channels.
- To pair a device:
 - Press Fn+1/2/3 for 3 seconds. The corresponding key will flash blue rapidly, indicating pairing mode.
 - Once paired, the key will flash blue for 2 seconds and return to the previous lighting effect.
 - If pairing is not completed within 3 minutes, the backlight turns off, and pairing mode ends. Repeat the process to re-enter pairing mode.
- If the connection is lost, the key will flash blue slowly for 30 seconds while trying to reconnect. If the reconnection fails, the backlight will turn off, and blinking will stop.

2.4G Mode Pairing Instructions (for wireless models)

- Set the toggle switch to the left position to enable 2.4G mode.
- The key for 2.4G mode (Fn+4) will flash green slowly (the backlight will stop blinking after 30 seconds if not paired).
- To pair:
 - Disconnect the dongle from the device.
 - Press and hold Fn+4 for 3 seconds. The key will flash green rapidly, indicating pairing mode.
 - Insert the dongle into the PC.
 - Place the keyboard as close to the dongle as possible.
 - Once paired, the key will light green for 2 seconds and then return to the previous lighting effect.
- If the connection is lost, the key will flash green slowly for 30 seconds while trying to reconnect. If the reconnection fails, the backlight will turn off, and blinking will stop.

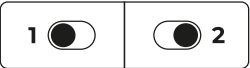
Software

- Plug the USB connector from your keyboard into any free USB port.
- Boot your computer and connect to the internet.
- Navigate to darkproject.eu and download the appropriate software.
- Start the software installation process and follow the on-screen instructions.

Switching Win/Mac Mode (if applicable)

- Win Mode:** Toggle switch to the left.
- Mac Mode:** Toggle switch to the right.

For Terra Nova:



- Win Mode:** Toggle switch to the right.
- Mac Mode:** Toggle switch to the left.

For wired models:

- Win Mode:** Press and hold FN + W for 3 seconds.
- Mac Mode:** Press and hold FN + M for 3 seconds.

Hotkeys (Windows)

Fn + ESC	Turn off / on backlight	Fn + F10	Home
Fn + F1	Multimedia	Fn + F11	Calculator
Fn + F2	Volume -	Fn + F12	Search
Fn + F3	Volume +	Fn + +/-	Light up / Light down
Fn + F4	Mute	Fn + +/-	Light speed up / Light speed down
Fn + F5	Stop	Fn + Win_L	Lock / Unlock Win
Fn + F6	Previous	Fn + Pause	Custom Backlight Recording
Fn + F7	Play / Pause	Fn + Home	Switch main backlight colors
Fn + F8	Forward	Fn + Print	Lighting effect switch
Fn + F9	E-mail	Fn + Del	Long press FN + Del for 3 seconds to restore factory settings
Fn + R_Shift	Snap Tap Mode	Fn + Space	Battery charge (wireless keyboards)

Hotkeys (macOS)

Fn + ESC	Turn off / on backlight	Fn + F10	Mute
Fn + F1	Reduce display brightness	Fn + F11	Volume down
Fn + F2	Raise display brightness	Fn + F12	Volume up
Fn + F3	Mission Control	Fn + +/-	Light up / Light down
Fn + F4	Spotlight Search	Fn + +/-	Light speed up / Light speed down
Fn + F5	N/A	Fn + Win_L	Lock / Unlock Mac
Fn + F6	N/A	Fn + Pause	Custom Backlight Recording
Fn + F7	Previous song	Fn + Home	Switch main backlight colors
Fn + F8	Play / Pause	Fn + Print	Lighting effect switch
Fn + F9	Next song	Fn + Del	Long press FN + Del for 3 seconds to restore factory settings
Fn + R_Shift	Snap Tap Mode	Fn + Space	Battery charge (wireless keyboards)

DISPOSAL INFORMATION

The crossed-out wheelee-bin symbol means that you must not dispose of this product together with unsorted household D waste. As electrical devices can contain harmful substances which may cause environmental damage or harm to your health if not disposed of correctly, please dispose of these products separately. As the end user, you are required by law to dispose of used electrical equipment at an official recycling point. For information about local recycling points, contact your local authority, civic amenity site or the business where you purchased this product. By disposing of electrical products at an official recycling point, you are doing your part to ensure equipment is recycled correctly and professionally, and the environment is protected. Wherever possible, remove any batteries before disposing of the device. Under law, as the end user you face risk of penalties if you dispose of devices and batteries illegally.

IMPORT INFO

Purpose of product: computer accessory
Connection: 1 x USB
Product material: plastic/metal/rubber
Used for: entering information into a personal computer
Please check with your local authorities for shipping regulations before shipping.
Manufacturer:
Dark Project LLC Profiti Ilias 4, 102, KIBG, Germasogeia Municipality, Limassol, 4046, Cyprus.
Importer:
EU Importer: FS-Holding Ltd. Profiti Ilias 4, Germasogeia, Limassol, Cyprus, 4046. E-mail: care@fragstore.com. Tel: +35 725 26 01 66
UA Importer: ТОВ "ФС Дистрибушн" вул. Чадар Єлизавети, будинок 13, Н/П 394А, 02072, Київ, Україна. E-mail: distribution@fs-d.com.ua Tel +38 044 592 4990
The importer is responsible for processing claims from buyers
Made in China
Date of manufacture: indicated on the package
Serial number: indicated on the package

Correct Disposal of This Product (Waste Electrical & Electronic Equipment, Applicable in the European Union and other European countries with separate collection systems). This marking shown on the product or its documentation indicates that it shouldn't be disposed with other household wastes at the end of its working life. To prevent possible harm to the environment or human health from uncontrolled waste disposal, please separate this from other types of waste and recycle it responsibly to promote sustainable re-use of material resources. Household users should contact either the retailer from whom they purchased this product, or their local government office, for details of where and how they can take this item for environmentally safe recycling. Business users should contact their supplier and check the terms and conditions of the purchase contract. This product should not be mixed with other commercial wastes for disposal.

Statement of compliance with EU Directive
Hereby, Dark Project LTD, declares that this keyboard follows the requirements and other relevant provisions of Directive 2014/30/EU and 2015/863/EU