

Item No. 42592

Delock External Enclosure M.2 Key B 42 mm / mSATA SSD > USB Type-C™ 3.1 Gen 2 female

Description

This enclosure by Delock enables the installation of an M.2 SSD in 2242 and 2230 format or an mSATA SSD, it can be connected via USB Type-A to the PC or laptop.

M.2



Specification

- Connectors:
 - external:
 - 1 x SuperSpeed USB 10 Gbps (USB 3.1 Gen 2) USB Type-C™ female
 - internal:
 - 1 x 67 pin M.2 key B slot
 - 1 x mSATA slot (full size)
- Chipset: Asmedia ASM235
- Interface: SATA
- Supports M.2 modules in format 2242 and 2230 with key B or key B+M based on SATA
- Maximum height of the components on the module: 1.5 mm, application of double-sided assembled modules supported
- Data transfer rate up to 6 Gbps
- LED indicator for power and access
- Dimensions (LxWxH): ca. 93 x 50 x 13 mm
- Hot Plug, Plug & Play

System requirements

- Windows 7/7-64/8.1/8.1-64/10/10-64, Linux ex Kernel 3.10.x / Kernel 4.6
- PC or laptop with a free USB Type-A port

Package content

- External enclosure
- Cable USB-C™ male to USB Type-A male, length ca. 30 cm
- Screwdriver
- 2 screws
- User manual

Additional Information

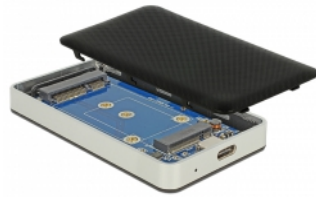
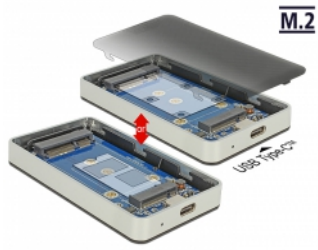
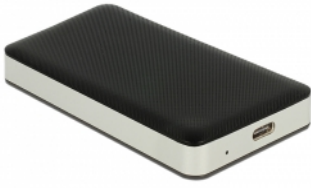
EAN: 4043619425921

Country of origin: China

Package: Retail Box



Images



General	
function:	Hot Plug Plug & Play
Supported operating system:	Linux ex Kernel 4.6 Linux ex Kernel 3.10.x Windows 7 32-bit Windows 7 64-bit Windows 8.1 32-bit Windows 8.1 64-bit Windows 10 32-bit Windows 10 64-bit
Supported module:	M.2 modules in format 2242 and 2230 with key B or key B+M based on SATA
Maximum height of the components on the module:	1.5 mm application of double-sided assembled modules supported
Interface	
External:	1 x SuperSpeed USB 10 Gbps (USB 3.1 Gen 2) USB Type-C™ female
Internal:	1 x 67 pin M.2 key B slot
Technical characteristics	
Chipset:	Asmedia ASM235
Data transfer rate:	6 Gb/s
Physical characteristics	
Housing material:	Plastic Aluminium
Cable length:	30 cm
Length:	93 mm
Width:	50 mm
Height:	13 mm
Colour:	grey / black