



# HP EliteDesk 705 G1 Microtower PC

Designed to perform, impress, and protect—this sleek HP EliteDesk helps you power through to business success while allowing customized deployment with HP's broadest range of form factors.



## HP recommends Windows.

Windows 8.1<sup>9</sup>

AMD A-Series PRO APU<sup>1</sup>

### The solution for diverse business demands.

The new way to do business. Impress and perform like never before—and meet a variety of business demands—with highly customizable tools and a stylish new design.

### Pure performance.

Unlock the full potential of your PC. The latest AMD A-Series PRO APUs<sup>1</sup> with HSA architecture that maximizes efficiency by intelligently prioritizing system tasks between the CPU and GPU.

### Heavy security, exceptionally managed.

Keep it secure, keep it simple. IT efficiency reigns supreme when it's backed by a full portfolio of security solutions, including HP BIOSphere<sup>2</sup> and HP Client Security.<sup>3</sup>

### Expand with ease.

Extend the life of your purchase. Using the tool-less chassis this easily upgradable platform features up to 4 expansion slots, 10 ports and multiple connectors to help you meet growing demands.

### Simplify device management.

Reduce the complexity of administration. HP Client Management and DASH compliant devices help you easily and affordably manage assets.<sup>4</sup>

### Features

Enjoy the stunning graphics provided by affordable AMD Radeon™ Graphics.<sup>5</sup>

Get fast access to the data and applications your business demands with solid-state hybrid drive options.

HP BIOSphere keeps mission-critical data and systems protected with customizable security.<sup>2</sup>

Guard your data, device and identity with HP Client Security.<sup>3</sup>

With TPM 1.2 your critical data has protection with hardware-based encryption keys.

Keep everything in plain sight and be up to 35%<sup>6</sup> more productive. There's plenty of screen room for all your work with support for up to two external displays.<sup>7</sup>

Extend your business investments with a long life cycle and platform stability.

Save your data. RAID configurations utilize dual storage drives to automatically back up and help protect your sensitive data.<sup>8</sup>

# HP EliteDesk 705 G1 Microtower PC

HP recommends Windows.



<b>Form Factor</b>	Microtower
<b>Operating System</b>	Windows 8.1 Pro 64 <sup>1</sup> Windows 8.1 64 <sup>1</sup> Windows 7 Professional 64 <sup>1</sup> Windows 7 Professional 32 <sup>1</sup> Windows 7 Professional 32 (available through downgrade rights from Windows 8.1 Pro) <sup>2</sup> Windows 7 Professional 64 (available through downgrade rights from Windows 8.1 Pro) <sup>2</sup> Ubuntu Linux 64 FreeDOS 2.0
<b>Processor Family</b>	AMD A-Series PRO; AMD A-Series
<b>Processor</b>	AMD A10 PRO-7850B APU with Radeon R7 Graphics (3.7 GHz, 4 MB cache, 4 cores); AMD A10 PRO-7800B APU with Radeon R7 Graphics (3.5 GHz, 4 MB cache, 4 cores); AMD A8 PRO-7600B APU with Radeon R7 Graphics (3.1 GHz, 4 MB cache, 4 cores); AMD A8-6500B APU with Radeon HD 8570D Graphics (3.5 GHz, 4 MB cache, 4 cores); AMD A6 PRO-7400B APU with Radeon R5 Graphics (3.5 GHz, 1 MB cache, 2 cores); AMD A6-6420B APU with Radeon HD 8470D Graphics (4 GHz, 1 MB cache, 2 cores); AMD A4 PRO-7300B APU with Radeon HD 8470D Graphics (3.9 GHz, 1 MB cache, 2 cores); AMD A4-6320B APU with Radeon HD 8370D Graphics (3.8 GHz, 1 MB cache, 2 cores) <sup>3</sup>
<b>Chipset</b>	AMD D4
<b>Memory</b>	Up to 32 GB DDR3-1600 SDRAM <sup>4</sup> Memory slots: 4 DIMM
<b>Storage</b>	Internal drive bays Two 3.5" External drive bays One slim ODD; 1 SD reader 120 GB, up to 256 GB, SATA SE SSD <sup>5</sup> 500 GB, up to 1 TB, SATA SSHD <sup>5</sup> up to 500 GB, SATA SED <sup>5</sup> 500 GB, up to 1 TB, SATA (10000 rpm) <sup>5</sup> 500 GB, up to 2 TB, SATA (7200 rpm) <sup>5</sup>
<b>Removable Media</b>	Slim SATA BDXL Blu-ray writer; Slim SATA SuperMulti DVD writer; Slim SATA DVD-ROM <sup>6,7</sup>
<b>Graphics</b>	Integrated AMD Radeon HD; AMD Radeon HD 8350 (1 GB); AMD Radeon HD 8490 (1 GB); AMD Radeon R7 240 (2 GB); AMD Radeon R9 255 (2 GB); NVIDIA NVS 315 (1 GB); NVIDIA NVS 310 (512 MB); NVIDIA GeForce GT 630 (2 GB) <sup>9,10,11</sup> AMD Radeon HD graphics integrated on processor
<b>Audio</b>	DTS Studio Sound audio management technology, HD audio with Realtek ALC221 codec (all ports are stereo), microphone and headphone front ports (3.5 mm), line-out and line-in rear ports (3.5 mm), multi-streaming capable and internal speaker
<b>Communications</b>	Integrated Broadcom NetXtreme GbE Plus; Intel Ethernet I210-T1 PCIe GbE (optional); Intel Wireless-N 7260 802.11 a/b/g/n PCIe (optional); HP 802.11 a/b/g/n (2x2) Wireless Dual-Band Mini Card with Bluetooth <sup>®</sup> (optional) <sup>8</sup>
<b>Expansion Slots</b>	1 full-height PCIe x16 (x4); 1 full-height PCIe x16; 2 full-height PCIe x1; 1 15-in-1 media card reader (optional)
<b>Ports and Connectors</b>	6 USB 3.0; 6 USB 2.0; 1 serial; 2 PS/2 (keyboard and mouse); 1 VGA; 2 DisplayPort; 1 audio in; 1 audio out; 1 RJ-45; 1 headphone; 1 microphone Additional optional ports include 1 serial and 1 parallel
<b>Input Device</b>	HP PS/2 Keyboard; HP USB Keyboard; HP USB and PS/2 Washable Keyboard; HP USB Smart Card (CCID) Keyboard; HP Wireless Keyboard and Mouse combo <sup>12</sup> HP PS/2 Mouse; HP USB 1000 dpi Laser Mouse; HP USB Mouse; HP USB and PS/2 Washable Mouse
<b>Security</b>	Trusted Platform Module (TPM) 1.2; SATA port disablement (via BIOS); Drive lock; RAID (available as a configurable option); Serial, parallel, USB enable/disable (via BIOS); Optional USB port disable at factory (user configurable via BIOS); Removable media write/boot control; Power-on password (via BIOS); Setup password (via BIOS); HP Solenoid Hood Lock/Sensor; Support for chassis padlocks and cable lock devices
<b>Software</b>	HP business PCs are shipped with a variety of software titles including: HP Client Security, HP Drive Encryption (FIPS 140-2), HP Password Manager, Microsoft Security Essentials, CyberLink Power2Go DVD BD, HP ePrint Driver, HP PageLift, Box 50 GB Offer, Foxit PhantomPDF Express. Please refer to this product's quick spec document for a full list of preinstalled software <sup>13,14,15,16,17</sup>
<b>Dimensions</b>	35.5 x 34 x 17
<b>Weight</b>	6.35 kg Configured with 1 HDD and 1 ODD. Exact weight depends on configuration
<b>Operating Humidity Range</b>	10 to 90% RH
<b>Operating Temperature Range</b>	10 to 35°C
<b>Energy Efficiency Compliance</b>	ENERGY STAR <sup>®</sup> qualified configurations available Low halogen
<b>Power</b>	280 W standard efficiency, active PFC; 280 W, up to 93% efficient, active PFC
<b>Warranty</b>	3-year (3-3-3) limited warranty and service offering includes 3 years of parts, labor and on-site repair. Terms and conditions vary by country. Certain restrictions and exclusions apply.

Accessories and services (not included)

---

HP 8-GB PC3-12800  
(DDR3-1600 MHz) DIMM  
Memory



Maximize your business PC performance with HP Memory. Upgrading your memory is a cost-effective way to boost your system performance without having to upgrade your processor.

**Product number: B4U37AA**

---

NVIDIA NVS 315 1GB  
Graphics Card

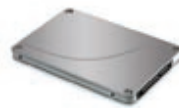


Get efficient dual-display graphics performance in a PCI Express low-profile graphics card with the NVIDIA NVS 315 PCIe x16 1 GB Graphics Card, an ideal desktop graphics solution for professional business and commercial applications.

**Product number: E1C65AA**

---

HP 128 GB SED Opal2 Solid  
State Drive



Get fast boot-up time, file searches, and application starts, and less downtime and power usage with the HP 128 GB SED Opal 2 Solid State Drive.

**Product number: G1K24AA**

---

HP Business Headset



Comfortable and lightweight, the HP Business Digital Headset provides a headset that is perfect for call centers, telephone-intensive jobs, or casual use while working at your desk. The over-the-head flexible design includes light padding, full size leather ear phones and a mounted microphone boom.

**Product number: QK550AA**

---

HP Wireless Keyboard and  
Mouse



The HP Wireless Keyboard and Mouse places advanced functionality and ease of operation at your fingertips. Stop hiding wires and regain a clutter-free work space with a cordless keyboard, cordless laser mouse and USB wireless receiver in a single package – built with the environment in mind.

**Product number: QY449AA**

---

4-year Next Business Day  
Onsite

Receive 4 years of next business day onsite repair from an HP-qualified technician for your computing device, if the issue cannot be solved remotely

**Product number: U7897E**



Learn more at  
[www.hp.eu/hpoptions](http://www.hp.eu/hpoptions)

Footnotes

<sup>1</sup> This system requires a separately purchased 64-bit operating system and 64-bit software products to take advantage of the 64-bit processing capabilities of AMD technology. Multi-core processing available with AMD technology is designed to improve performance of this system. Given the wide range of software applications available, performance of a system including a 64-bit operating system and a dual-core processor will vary. AMD's model numbering is not a measurement of clock speed.; <sup>2</sup> HP BIOSphere features may vary depending on the PC platform & configuration.; <sup>3</sup> Requires Windows.; <sup>4</sup> Third party management software is sold separately.; <sup>5</sup> AMD Radeon™ Dual Graphics requires an AMD "A" series APU plus optional AMD Radeon™ discrete graphics configuration and is available on Windows 7 and Windows 8. Linux OS supports manual switching which requires restart of X-Server to engage and/or disengage the discrete graphics processor for dual graphics capabilities. Additional hardware (e.g. Blu-ray drive, HD or 10-bit monitor, TV tuner, wirelessly enabled HDTV) and/or software (e.g. multimedia applications) are required for the full enablement of some features. HD Video display requires an HD video source.; <sup>6</sup> Observed Productivity, Efficiency and User Satisfaction when Using Multiple or Large Displays," Koala LLC Ergonomics Consulting, November 6, 2012.; <sup>7</sup> Support for external displays as a standard feature through integrated processor-based graphics is dependent upon the particular PC platform/form factor; the actual number of displays supported will vary. An optional discrete graphics solution will be required for the support of additional displays. Additional cables required.; <sup>8</sup> RAID configuration is optional and does require a second hard drive.; <sup>9</sup> Not all features are available in all editions or versions of Windows. Systems may require upgraded and/or separately purchased hardware, drivers and/or software to take full advantage of Windows functionality. See <http://www.microsoft.com>.

Technical specifications disclaimers

<sup>1</sup> Not all features are available in all editions or versions of Windows. Systems may require upgraded and/or separately purchased hardware, drivers and/or software to take full advantage of Windows functionality. See <http://www.microsoft.com>.; <sup>2</sup> This system is preinstalled with Windows 7 Pro software and also comes with a license and media for Windows 8.1 Pro software. You may only use one version of the Windows software at a time. Switching between versions will require you to uninstall one version and install the other version. You must back up all data (files, photos, etc.) before uninstalling and installing operating systems to avoid loss of your data.; <sup>3</sup> This system requires a 64-bit operating system and 64-bit software products to take advantage of the 64-bit processing capabilities of AMD technology. Multi-core processing available with AMD technology is designed to improve performance of this system. Given the wide range of software applications available, performance of a system including a 64-bit operating system will vary. AMD's numbering is not a measurement of clock speed.; <sup>4</sup> Graphics chipset uses part of the total system memory (RAM) for graphics performance. System memory dedicated to graphics performance is not available for other use by other programs.; <sup>5</sup> For hard drives, GB = 1 billion bytes. TB = 1 trillion bytes. Actual formatted capacity is less. Up to 16 GB (for Windows 7) and up to 36 GB (for Windows 8) of system disk is reserved for system recovery software.; <sup>6</sup> Duplication of copyrighted material is strictly prohibited. Actual speeds may vary. Double Layer media compatibility will widely vary with some home DVD players and DVD-ROM drives. Note that DVD-RAM cannot read or write to 2.6GB Single Sided/5.2 Double Sided-Version 1.0 Media.; <sup>7</sup> With Blu-Ray drive XL, certain disc, digital connection, compatibility and performance issues may arise, and do not constitute defects in the product. Flawless playback on all systems is not guaranteed. In order for some Blu-ray titles to play, they may require an HDCP path and HDCP display. HD-DVD movies cannot be played on this BDXL Drive.; <sup>8</sup> Wireless cards are optional or add-on features and requires separately purchased wireless access point and internet service. Availability of public wireless access points limited.; <sup>9</sup> HD content required to view HD images.; <sup>10</sup> AMD and NVIDIA discrete graphics sold separately or as an optional feature.; <sup>11</sup> AMD Radeon™ Dual Graphics requires an AMD "A" series APU plus optional AMD Radeon™ discrete graphics configuration and is available on Windows® 7 Professional, Windows 7 Ultimate, Windows® 7 Home Premium, and/or Windows® 7 Home Basic OS. Linux OS supports manual switching which requires restart of X-Server to engage and/or disengage the discrete graphics processor for dual graphics capabilities. Additional hardware (e.g. Blu-ray drive, HD or 10-bit monitor, TV tuner, wirelessly enabled HDTV) and/or software (e.g. multimedia applications) are required for the full enablement of some features. HD Video display requires an HD video source.; <sup>12</sup> Optional or add-on feature.; <sup>13</sup> Drive Encryption requires Windows. Data is protected prior to Drive Encryption login. Turning the PC off or into hibernate logs out of Drive Encryption and prevents data access.; <sup>14</sup> HP ePrint requires an Internet connection to HP web-enabled printer and HP ePrint account registration (for a list of eligible printers, supported documents and image types and other HP ePrint details, see [www.hp.com/go/eprintcenter](http://www.hp.com/go/eprintcenter)).; <sup>15</sup> Requires Box registration. Offer available to new Box users only. Box App requires Windows 8 or 8.1. Offer subject to change without notice.; <sup>16</sup> Microsoft Security Essentials requires Windows 7 and internet access.; <sup>17</sup> HP PageLift requires Windows 8.; <sup>18</sup> External power supplies, power cords, cables and peripherals are not low halogen. Service parts obtained after purchase may not be low halogen.

Learn more at  
[www.hp.eu/desktops](http://www.hp.eu/desktops)

Get engaged with HP Financial Services

Get engaged with HP Financial Services to implement innovative technologies essential for driving business value and competitive differentiation. More information on [www.hp.com/go/hpfs](http://www.hp.com/go/hpfs).

Sign up for updates  
[www.hp.com/go/getupdated](http://www.hp.com/go/getupdated)

The product could differ from the images shown. © 2014 Hewlett-Packard Development Company, L.P. The information contained herein is subject to change without notice. Specific features may vary from model to model. The only warranties for HP products and services are set forth in the express warranty statements accompanying such products and services. Nothing herein should be construed as constituting an additional warranty. HP shall not be liable for technical or editorial errors or omissions contained herein. Not all features are available in all editions of Windows 8.1. Systems may require upgraded and/or separately purchased hardware to take full advantage of Windows 8.1 functionality. See <http://www.microsoft.com/windows> for details. ENERGY STAR® and the ENERGY STAR® mark are registered U.S. marks. Bluetooth is a trademark of its proprietor used by Hewlett-Packard Company under license. AMD is a trademark of Advanced Micro Devices, Inc. All other trademarks are the property of their respective owners.

