

RAIDON
Your Data Security Guardian

InTANK
iR2622
User Manual

» InTANK iR2622 User Manual	3
» InTANK iR2622 產品使用說明	14

Introduction

Thank you for purchasing RAIDON products. This manual will introduce the InTANK iR2622 Series. Before using your InTANK iR2622, please read this manual thoroughly. Although all information contained in this user manual has been carefully verified before publishing, however, the actual product specification will be based on the time of delivery from RAIDON. Any updates to the product specifications or relevant information may be found on www.raidon.com.tw. Products are subject to change without prior notifications.

If you have any questions regarding the products of RAIDON, or you would like to know the latest product information, user manual update, or firmware update, please contact your local supplier or visit www.raidon.com.tw for further information.

Copyright © RAIDON TECHNOLOGY, INC. All rights reserved.

Table of Contents

1. Package Contents and Product Views
2. Operating Information
3. Hardware Requirements and Precautions
4. Hardware Installation Procedure
5. Setting RAID Mode
6. Computer Set Up
7. Hard Disk status on LCD screen
8. Data Rebuilding Operation
9. GUI Monitoring Software and Firmware Update GUI
10. Frequently Asked Questions

1. Package Contents and Product Views

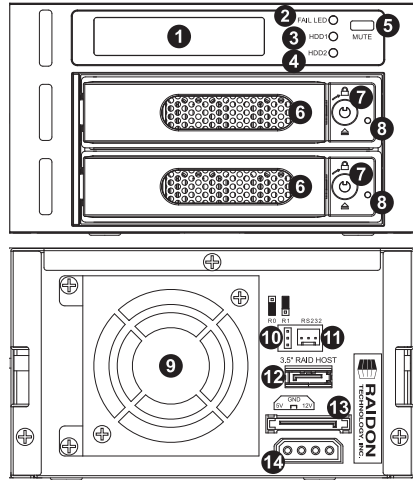
Open the package and you should find the following:

iR2622
iR2622 × 1 (with removable drive tray enclosed x2)
Internal RS232 Cable × 1
External RS232 Cable × 1
SATA Cable × 1
CD-Rom × 1
Accessories Kit bag × 2
Quick Installation Guide × 1

Please make sure that the contents listed above are not damaged or missing. If you should find damages or missing contents, please contact your supplier immediately.

Product View

1. LCD Display
2. LED of failure Alarm
3. Pri. HDD status indicator
4. Sec. HDD status indicator
5. Mute Button
6. Removable drive tray
7. HDD tray key lock
8. HDD Access
9. Cooling fan
10. RAID mode switch
11. RS232 Port
12. SATA Port
13. 15 PIN Power Connector
14. 4Pin Power Connector



LED Indicators :

Status	Fail LED	HDD 1	HDD 2	TRAY 1	TRAY 2	Buzzer
Stand by	--	Orange / light on		Blue / light on		--
HDD Failure	Red / light on	--		Red / light on		On
Access	--	Orange / light on		Blue and Purple / blinking		--
Rebuilding(Source)	--	Orange / light on		Blue / light on		--
Rebuilding(Target)	--	--		Red / blinking		--
Fan Failure	Red / light on	--		--		On
Over Heat($\geq 50^{\circ}\text{C}$)	Red / light on	--		--		On

2. Operating Information

Operating Temperature : 0 ~ 40°C (32 ~ 104°F)

Storage Temperature : -10 ~ 70°C (14 ~ 158°F)

Line Voltage : 100 ~ 240V AC

3. Hardware Requirements and Precautions

1. Computers or servers with SATA I & SATA II & SATA III.
2. Hard drive with SATA I & SATA II & SATA III
3. You are strongly advised to set the storage mode (the default is the Independent mode) before using the iR2622.
4. The product allows the user to simultaneously utilize two hard drives manufactured by different companies. However, if the user expects better efficiency, we strongly recommend the users to use hard drives manufactured by the same manufacturer.
5. Please make sure that the two hard drives are free from bad blocks or defects prior to installation in order to avoid system crashes or data loss.
6. The actual storage capacity of iR2622 recognized by the system may differ from the total capacity stated on the hard drives combined once the drives have been formatted.
7. It is highly recommended for users to back up important data contained within the iR2622 unit on a regular basis or whenever the user feels necessary to a remote or a separate storage device. Stardom will not be responsible for any lost of data caused during the use of the unit or the recovery of the data lost.

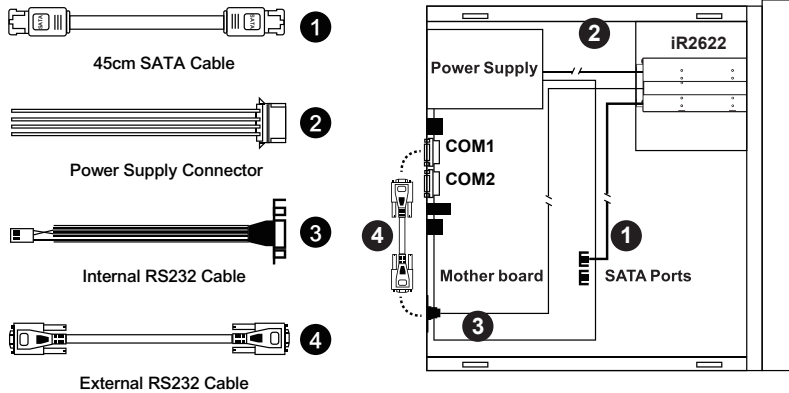
Note :

Once the drive mode configuration has been completed, re-configuration using the same hard drives to set the drive mode will result in complete data loss. If you must change the drive mode, make sure to backup all data prior to the mode change.

4. Hardware Installation Procedure

Please follow the instructions below to complete the hardware installation.

- Step 1 Open the package and take out the product making sure that all the enclosed contents are not damaged or missing. Should you find damages or missing contents, please contact your supplier immediately.
- Step 2 Place the system on a stable surface. Ensure that it is well ventilated without blockage to the vent and kept away from areas near water and damage prone areas.
- Step 3 Use the key included in the accessory kit and inserted into the key access opening to eject the removable drive tray latch and extract the removable drive tray.
- Step 4 Mount your hard drives onto the removable drive tray and secure it with the screws included in the accessory kit to avoid any damage to the hard drive due to accidental movements.
- Step 5 When the hard drive installation has been completed, insert the hard drive tray into the system horizontally and secure the latch into place.
- Step 6 Use the preferred cable included to connect your computer to the relative interface connection on the iR2622 unit.



Internal Case

※ Note :

1. RS232 Port and RS232 Cable: Provides hardware status monitoring to industrial control system or IPC via RS232.
2. We do not recommend users to disassemble the device without proper instructions and authorization. The manufacture warranty will not cover the damages caused by unauthorized disassembling.
3. To prevent the device from malfunction, please make sure the device is connected with a direct and dedicated power connection of a stable power input.

5. Setting the Hard Drive Array Mode

Please select the RAID mode with the jumper located at the back panel. The original default is RAID 1, still there are three pins at the back panel for RAID mode selection: RAID 0 mode by setting the jumper on the bottom of the two pins. RAID 1 mode by setting the jumper on the top of the two pins.

1. RAID 1 Mode

- 1). Place two new hard drives into iR2622 and strongly suggest you to use two identical hard drives to get the equal capacity. If the capacity is different, iR2622 is downward to the small hard drive capacity.
- 2). Under RAID 1 mode, two hard drives has the identical information as one to mirror to the other one, therefore each of the hard drive failed is still able to function normally. When you replace the failed hard disk to the new one the system automatically rebuilding the data to the newly place hard disk.

2. RAID 0 Mode

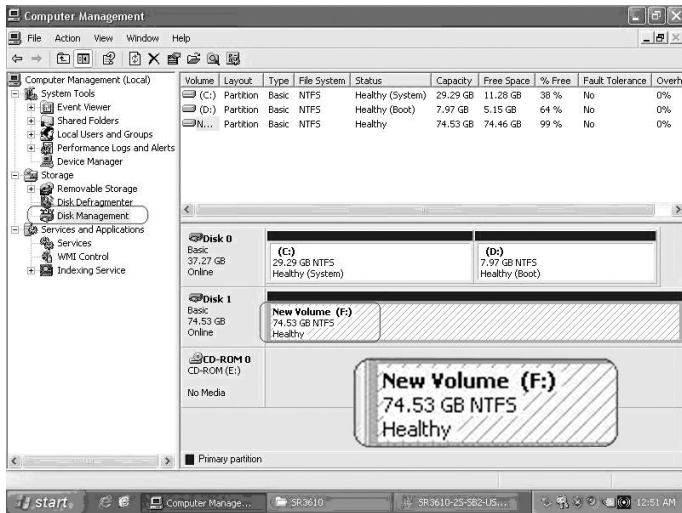
- 1). Place two new hard drives into iR2622 and strongly suggest you to use two identical hard drives to get the equal capacity. If the capacity is different, iR2622 is downward to the small hard drive capacity.
- 2). Under RAID 0 mode, capacity is add up to a one big volume, also with the feature of faster read/write performance efficient.

6. Computer Set Up

When the hardware setup for iR2622 is complete, you are now ready to turn the machine on.

After the hardware installation is complete, the iR2622 will be treated as one single hard drive. Set the hard drive to AUTO in the computer's BIOS. When the computer is turned on, the system will retrieve the following information:

1. In iR2622, the installed hard drive can be detected by the Device Manager of Computer Management for Windows.
2. Customers can choose to format the hard drive by using the Disk Management tool of the operating system before using the iR2622.



At this point, the installation process is completely finished. The user can freely retrieve and save data to iR2622 just like retrieving and saving data to a regular hard drive. If the user experiences any abnormality during the operation, please refer to the trouble shooting Q&A section in Appendix.

7. Hard Disk status on LCD screen

1. Booting and Normal status.

iR2622
RAID-1 vxxxxxx.x

Pri HDD : OK
Sec HDD : OK

2. Over Temperature ($\geq 50^{\circ}\text{C}$)

Pri HDD : OK
Sec HDD : OK T

3. Fan Failure.

Pri HDD : OK F
Sec HDD : OK

4. RAID 1 Degraded. Primary hard drive is failure, but secondary hard drive is normal.

RAID-1 degraded
Pri : X Sec : O

5. RAID 1 Failure. Primary and secondary hard drives are failure.

RAID-1 failure
Pri : X Sec : X

6. RAID 1 Failure. (Double Source)

RAID-1 failure
Double Source

7. RAID 0 Failure. Primary hard drive is missing, but secondary hard drive is normal.

RAID-0 failure
Pri : M Sec : O

8. Rebuilding

Rebuilding
Sec→Pri 32%

8. Data Rebuilding Operation

The hard drive Hot Swap and Auto Rebuilding functions are available.

Off-line Back up When the data is stored within iR2622, the user can remove one of the hard drives from iR2622 as back up drive for data such as system operation file, secured files, seldom modified files or image and music files. The user can periodically insert the hard drive back into iR2622 to execute automatic backup to protect the system from being hit by computer virus or to avoid risk of having both hard drives failing at the same time.

When one of the two hard drives fails in the iR2622 system, the system will alarm the hard drive failure message both on the LCD display screen and in the monitoring software. The user can remove the failed hard drive from the system while the system is still in operation without shutting down the machine. If the failed hard drive is replaced shortly, the system will automatically execute the Auto Rebuilding function without affecting the system operation and without any operation command from the user.

When the iR2622 detects a hard drive missing or a hard drive failure, the Buzzer will start and the LCD display screen will display the following messages:

RAID-1 degraded
 Pri : X Sec : 0

After removing the failed hard drive and replacing with a new hard drive, if the hard drive is properly installed, the LCD display screen will display the following messages:

Pri HDD : OK
 Sec HDD : Insert

Pri HDD :Insert
 Sec HDD : OK

After few seconds of installing the new hard drive, the LCD display screen will display the data rebuilding progress:

Rebuilding
 Sec→Pri 32%

Rebuilding
 Pri→Sec 32%

When the rebuilding is fully completed, the LCD display screen will again display the following messages:

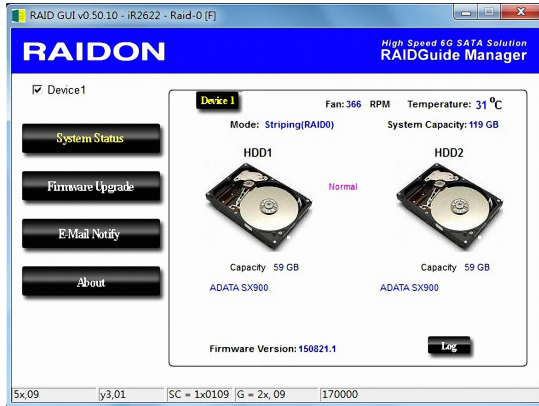
Pri HDD : OK
 Sec HDD : OK

9. GUI Monitoring Software and Firmware Update

You can install GUI software to monitor the status of iR2622. This can be done by installing software from CD.

※ The HDD1 equals to Pri HDD and HDD2 equals to Sec HDD.

1. System Status



This GUI will auto detects the connected iR2622 and reveals relative information accordingly.

2. Firmware Upgrade

You may update the Firmware via this GUI, simply click on “Load” button to locate the firmware file to proceed. After update is finished, you may restart the power properly to operate with newly updated firmware.



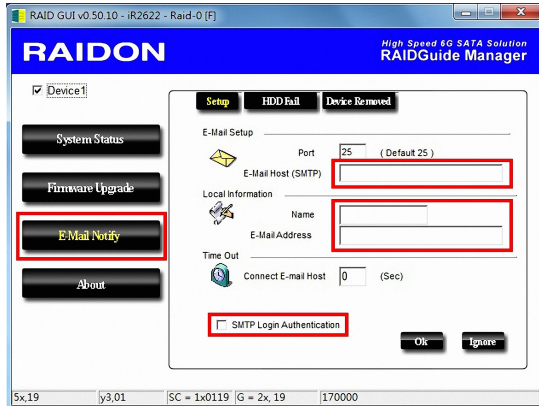
※Caution : Any random firmware updates may cause device in malfunction, it is strongly suggested not to update device firmware if device is operating properly.

3. E-Mail Notify

Configuring an e-mail address for notification of drive malfunctioning or being removed.

3-1 Setup

- 1). Insert “Outgoing” SMTP and e-mail name and address.
- 2). If it is passwords required, select the option “SMTP Login Authentication” and insert the passwords.

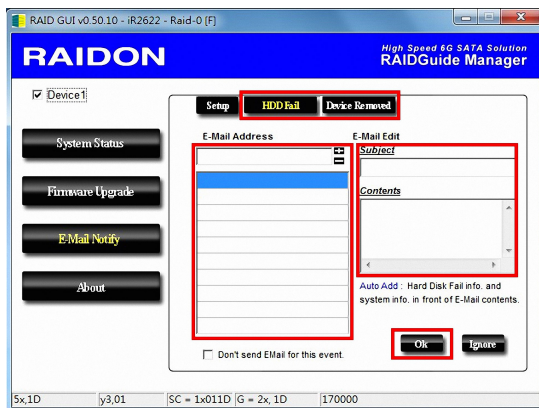


- 3). When the configuration completed, click on the “OK” button to save.

※ Device must be connected in operational states during configurations to take effects.

3-2 HDD Fail / Device Removed

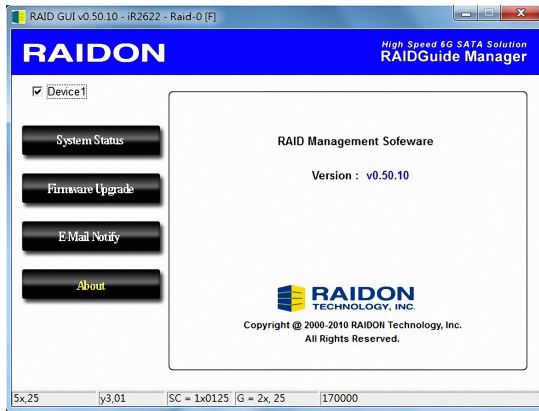
- 1). Insert the e-mail address of the receiver for notification and click on “+” to add the inserted e-mail address onto the notifying list. (Maximum up to 10 e-mail addresses)



- 2). Insert the error message and descriptions from the columns of “Subject” and “Contents”.
- 3). When the configuration completed, click on the “OK” button to save.

※ Device must be connected in operational states during configurations to take effects.

4. About Indicates GUI Management Software version



10. Frequently Asked Questions

Unstable system after connecting iR2622

Q1. After installing iR2622, we are unable to start the computer or the computer can not locate iR2622 upon startup.

A :

1. Please check whether the readings on the iR2622 LCD display screen appear normal.
2. Please check whether the SATA Cable connection cables are properly connected to the computer system and whether SATA drives are functioning normally.
3. If everything is functioning properly but the user still can not start the computer system, then the problem might be the system incompatibility. If such incompatibility takes place, please contact our technical support department.

Q2. When the iR2622 is in use, the computer system is functioning normally but the iR2622 access speed is abnormal.

A :

1. Please first check whether the iR2622 is in the progress of executing data auto-rebuild.
1. Please examine if the length of the connection cables, SATA cable that connect the drives to the computer system is too long and whether the specification these cables complies with the requirements.
2. If both the lengths and specification of the cables are checked out ok, please turn off iR2622 and remove the hard drive from iR2622. Test the hard drive directly with the computer system since it might be the bad sectors in the hard drive that are causing the longer than normal system down time.

Hard Drive Failure

Q1. Under the mirror mode (RAID 1), what will be the system's total storage capacity when adding a brand new hard drive?

A :

1. The total storage capacity for iR2622 is determined by the storage capacity of the primary hard drive installed during the initial usage.
2. The storage capacity will not increase after initial installation even when place a brand new hard drive with larger storage capacity.

- Q2. Why does the error message appear when I installed the second hard drive?
- A : 1. The storage capacity of the second hard drive must be larger than the first hard drive. Otherwise, iR2622 can not rebuild the new hard drive.

About Auto Rebuilding Function

- Q1. What will happen if we turn off the computer's power while iR2622 is still executing data auto rebuilding?
- A : Under the mirror mode (RAID 1), if the power is out of the auto rebuilding process, the controller will remember when completion percentage of the auto rebuilding process and resume the rebuilding process when the power is back on.
- Q2. Is it possible to lose any part of the data during the data auto rebuilding?
- A : The data auto rebuilding function will copy data from one sector to another sector. Technically speaking, the data will not be lost during the auto rebuilding process. However, if the original hard drive is detected with bad sectors during the rebuilding process, iR2622 will make hypothetical duplication instead of treat the bad sectors as hard drive failure. Therefore, the data stored in the bad sectors could potentially be lost during rebuilding.

關於這份手冊

感謝您使用RAIDON 的產品。本手冊將介紹InTANK iR2622 產品。在您開始使用iR2622 系列產品前，建議您先閱讀過本手冊。手冊裡的資訊在出版前雖已被詳細確認，實際產品規格仍將以出貨時為準；任何產品規格或相關資訊更新請您直接到www.raidon.com.tw 網站查詢，本公司將不另行通知。若您想獲得RAIDON 最新產品訊息、使用手冊、韌體或對RAIDON 產品有任何疑問，請您聯絡當地供應商或到www.raidon.com.tw 取得相關訊息。

本手冊相關產品內容歸 銳銓科技股份有限公司 版權所有

目錄索引

1. 產品外觀及包裝內容
2. 環境需求
3. 硬體需求與注意事項
4. 硬體安裝
5. 設定RAID層級
6. 電腦安裝
7. LCD訊息顯示
8. 資料重建功能說明
9. GUI功能說明與韌體更新
10. 常見問題

1. 產品外觀及包裝內容

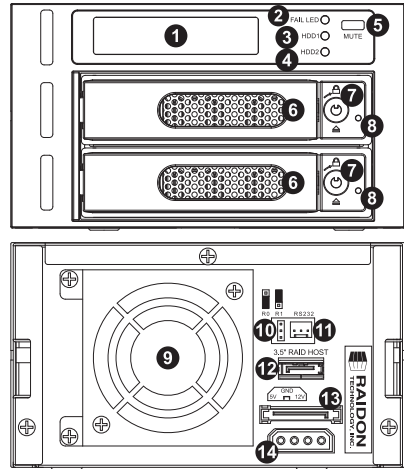
打開包裝外盒後，包裝內容應包含下列組件：

iR2622
iR2622產品本體X1(內含抽取盒x2)
內接RS232線 x1
外接RS232線 x1
SATA線 x1
光碟 x 1
零件包 x 2
快速安裝導引 x 1

請確認相關配件與產品本身是否有受損或配件缺少，若有任何疑問請與本產品供應商聯絡。

正面與背面示意圖

1. 液晶顯示面板
2. 故障警示燈
3. 主硬碟狀態指示燈
4. 次要硬碟狀態指示燈
5. 靜音按鈕
6. 硬碟抽盒把手
7. 硬碟抽取盒鑰匙孔
8. 硬碟讀寫燈
9. 散熱風扇
10. RAID模式設定
11. RS232埠
12. 3.5"硬碟SATA連接埠
13. SATA 15Pin電源輸入埠
14. 4Pin電源輸入埠



燈號一覽表：

狀態	警示燈	HDD 1	HDD 2	TRAY 1	TRAY 2	蜂鳴器
待機	--	橘燈恆亮		藍燈恆亮		--
硬碟故障	紅燈恆亮	--		紅燈恆亮		鳴叫
資料存取	--	橘燈恆亮		藍紫燈閃爍		--
資料重建(Source)	--	橘燈恆亮		藍燈恆亮		--
資料重建(Target)	--	--		紅燈閃爍		--
風扇故障	紅燈恆亮	--		--		鳴叫
溫度過高($\geq 50^{\circ}\text{C}$)	紅燈恆亮	--		--		鳴叫

2. 環境需求

- 工作溫度：0 ~ 40°C (32 ~ 104°F)
 儲存溫度：-10 ~ 70°C (14 ~ 158°F)
 工作電壓：100 ~ 240V AC

3. 硬體需求與注意事項

1. 電腦或伺服器具備SATA I、SATA II或SATA III介面。
2. 具備SATA I、SATA II或SATA III介面的硬碟。
3. 強烈建議使用iR2622前先設定好RAID模式(預設值是RAID 1)。

4. 本系統允許使用不同廠牌的硬碟。但如果要獲得更好的效能，我們強烈建議使用相同廠牌型號的硬碟。
5. 安裝硬碟前請先確認所使用的硬碟並無壞軌或是其他問題，以免導致系統損毀或資料遺失。
6. 硬碟格式化後，iR2622的總使用儲存容量或許會與硬碟容量加總後的有所不同。
7. 強烈建議除了使用iR2622系列的資料儲存功能外，請針對重要資料備份到另一個儲存裝置上或遠端備份，雙重備援您重要的資料。若您儲存在iR2622系列的資料損毀或遺失，RAIDON將不負任何的責任。

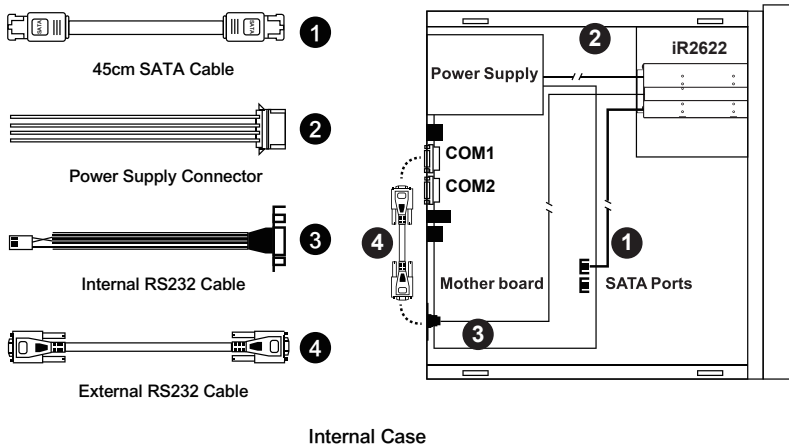
注意：

一旦使用模式確認後，使用相同的硬碟進行模式切換將會導致資料遺失。如果需要進行模式變更，請於變更前先進行資料備份。

4. 硬體安裝

請參照以下步驟完成硬體安裝

- 步驟 1 拆開外包裝並取出產品本體。(請確認相關配件與產品本身是否有受損或是缺少配件，若有任何疑問請與您的經銷商或業務人員連絡。)
- 步驟 2 將系統擺放於穩固平台，並確認散熱風扇口沒有被其他物體擋住，系統四周有適當的散熱空間。(擺放環境請避免接近潮濕或其他易對產品造成損傷的環境。)
- 步驟 3 請使用零件包內附的鑰匙插入鑰匙孔向左轉90度，輕按鎖頭抽取盒門將會輕彈開啟，即可將硬碟抽取盒取出。
- 步驟 4 將硬碟安裝到抽取盒上，並以零件包內附的螺絲加以固定，以避免不必要的移動對硬碟造成傷害。
- 步驟 5 硬碟安裝完成後請將抽取盒平移放入主機內並關上把手。
- 步驟 6 將附件中的連接線分別接到電腦與iR2622的相關連接埠。(參照以下圖面)



※ Note :

1. RS232埠與RS232線：提供工控系統或是工業電腦透過RS232監控硬碟狀態。
2. 我們不建議使用者在未經授權的情況下自行拆卸系統。如未經授權自行拆卸所導致的損毀將不在保固之列。
3. 為了防止系統發生問題，請確保系統的電源供應是穩定且獨立的。

5. 設定RAID層級

請透過機器後面的jumper來設定RAID層級。出廠預設值是RAID 1。機器背面有三根pin腳用來設定RAID層級，若要設定RAID 0模式，請選用下面兩根；若要設定RAID 1模式，請選用上兩根。

1. RAID 1 模式

- 1). 將新的硬碟放入iR2622中。強烈建議您使用兩顆相同的硬碟，以便取得對等的容量。如果兩顆硬碟的容量不同，iR2622將會以小容量的硬碟為依據。
- 2). RAID 1模式下，兩顆硬碟是鏡射關係因此擁有相同的資料，因此有一顆硬碟損毀仍然可以正常運作。當放入新硬碟取代損毀硬碟後，系統會自動將資料重建到新的硬碟。

2. RAID 0 模式

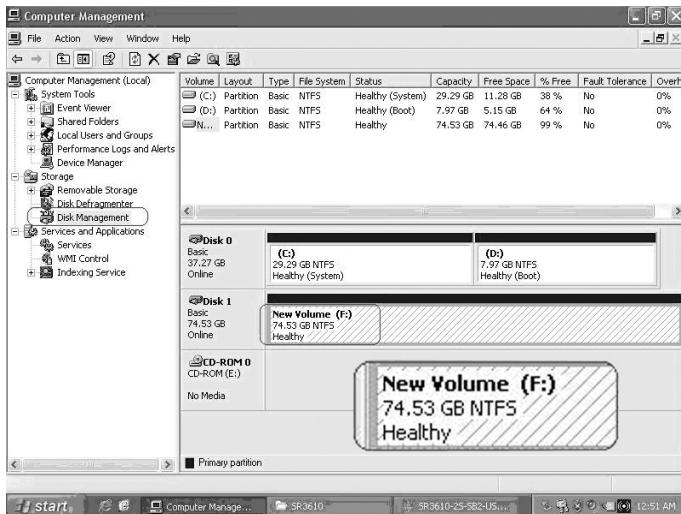
- 1). 將新的硬碟放入iR2622中。強烈建議您使用兩顆相同的硬碟，以便取得對等的容量。如果兩顆硬碟的容量不同，iR2622將會以小容量的硬碟為依據。
- 2). RAID 0模式下，兩顆硬碟的容量會被加總成一個大儲存容量，並且提供更佳的存取效能。

6. 電腦設定

當iR2622的硬體安裝完成，即可準備進行開機動作。

硬體安裝完成後，將BIOS的硬碟偵測設定為自動，iR2622將會被視為如同一顆硬碟一般。當電腦開機後，系統會顯示下列偵測訊息：

1. 安裝在iR2622中的硬碟能夠被Windows的裝置管理員偵測到。
2. 使用iR2622前，使用者可以透過磁碟管理選擇硬碟的格式。



到此完成整個安裝程序。使用者可以如同存取一般硬碟般的使用iR2622。如果使用上仍有問題，請參閱附件的Q&A。

7. 訊息顯示

1. 開機與正常待機狀態.

iR2622
RAID-1 vxxxxxx.x

Pri HDD : OK
Sec HDD : OK

2. 溫度過高

Pri HDD : OK
Sec HDD : OK T

3. 風扇故障

Pri HDD : OK F
Sec HDD : OK

4. RAID 1降級，Pri硬碟損毀而Sec硬碟仍然可正常存取

RAID-1 degraded
Pri : X Sec : O

5. RAID 1損毀，Pri與Sec硬碟皆損毀

RAID-1 failure
Pri : X Sec : X

6. RAID 1損毀，Source碟重複

RAID-1 failure
Double Source

7. RAID 0損毀，Pri硬碟遺失而Sec硬碟仍然正常

RAID-0 failure
Pri : M Sec : O

8. 資料重建

Rebuilding
Sec→Pri 32%

8. 資料重建功能說明

具備硬碟熱抽拔與自動資料重建功能。

離線備份。當資料儲存在iR2622後，使用者可以移除其中一顆硬碟當作資料備份碟，確保相關資料例如作業系統檔案、加密文件、較少存取的檔案甚至影音檔案的安全。使用者可以定期的將硬碟放回iR2622執行自動資料重建，確保系統不會被病毒攻擊或是減少兩顆硬碟同時損毀的風險。

當iR2622中的其中一顆硬碟損毀，系統會透過LCD顯示幕與監控軟體發出警示。使用者可以在系統仍在運作下，無需關掉機器即可將損毀的硬碟取出。一旦替換損毀硬碟後，iR2622即會在不影響系統運作的情況下自動開始進行資料重建，使用者也無需對iR2622下任何指令。

當iR2622偵測到硬碟遺失或是損毀，蜂鳴器會啟動，LCD螢幕會顯示以下訊息：

RAID-1 degraded
Pri : X Sec : O

當移除損毀的硬碟並替換一顆新硬碟後，如果新硬碟有正確安裝，LCD螢幕會顯示以下訊息：

Pri HDD : OK
Sec HDD : Insert

Pri HDD :Insert
Sec HDD : OK

安裝新硬碟後幾秒鐘，LCD螢幕會顯示資料重建的進度：

Rebuilding
Sec→Pri 32%

Rebuilding
Pri→Sec 32%

當資料重建完成後，LCD螢幕會顯示以下訊息：

Pri HDD : OK
Sec HDD : OK

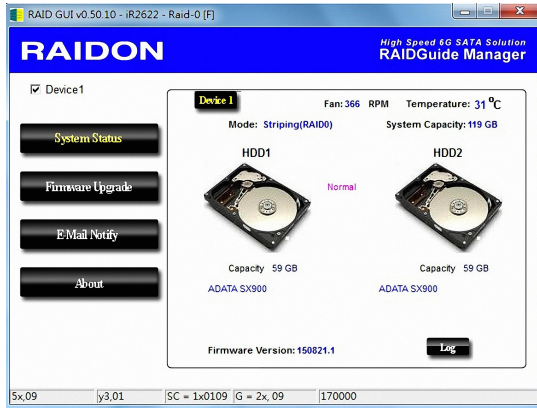
9. GUI功能說明與韌體更新

使用者可以透過光碟來安裝GUI軟體，藉此監控iR2622的狀態。

※ HDD1等於Pri硬碟，HDD2等於Sec硬碟。

1. 系統狀態

GUI會自動偵測iR2622並且顯示相關資訊。



2. 韌體升級

使用者可以透過此GUI進行韌體升級。只需簡單的點選”Load”指定韌體檔案位置後即可進行升級。升級過程或許需要重新啟動系統來完成整個升級程序。



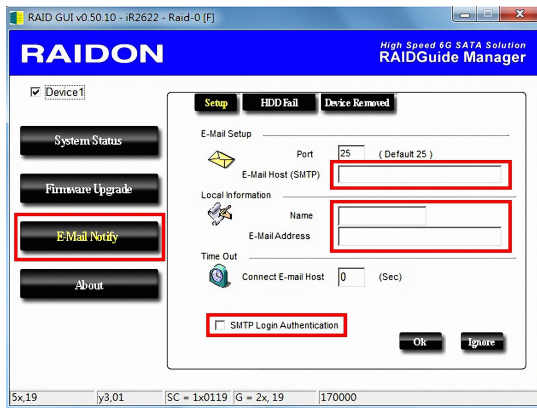
※注意：任意更新韌體有可能導致系統運作不正常。強烈建議如果系統運作正常情況下不要進行韌體升級。

3. E-Mail通知

設定e-mail帳號來收取系統問題或被移除通知。

3-1 設定

- 1). 填入e-mail相關名稱與完整位置，以及SMTP的相關資訊。
- 2). 如果需要密碼，請勾選“SMTP Login Authentication”並輸入密碼。

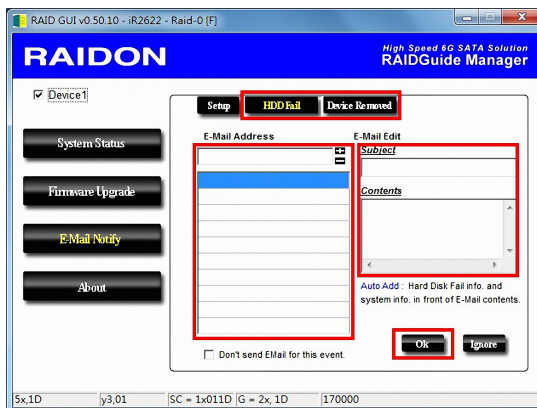


- 3). 相關資訊填寫完成後，點選“OK”。

※ 設定過程中，系統必須維持在正常運作狀態。

3-2 硬碟損毀/裝置被移除

- 1). 在E-Mail Address欄位填入要收取通知的e-mail，點選“+”即可增加另一組。(最多可填入10組e-mail)。

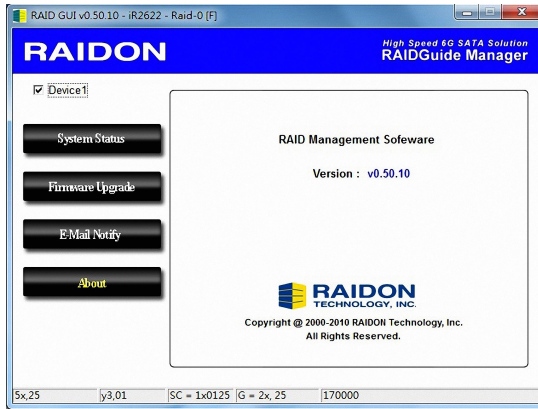


- 2). 在“Subject”與“Contents”填入e-mail訊息的主旨與內容。

- 3). 相關資訊填寫完成後，點選“OK”。

※ 設定過程中，系統必須維持在正常運作狀態。

4. 關於GUI軟體版本



10. 常見問題

連接iR2622後系統不穩定

Q1. 安裝完iR2622後，電腦無法開機或是電腦認不到iR2622.

A: 1. 請確認iR2622上的LCD螢幕顯示正常。
2. 請確認SATA線有正確的跟電腦連接且硬碟是可正常運作。
3. 如果一切正常但使用者還是無法正常開機，這有可能是因為硬體上的相容性問題。如果是硬體上相容性問題，請聯繫我們的客服部門。

Q2. 使用時，電腦運作正常但是iR2622的存取效能不正常。

A: 請確認iR2622是否正在資料重建。
1. 請確認所使用的連接線長度，是否所使用的SATA線太長以及是否合乎標準規範。
2. 如果線材的長度與規格都沒問題，請關閉iR2622並取出其中的硬碟。直接接硬碟連接到電腦並進行檢測，有可能是硬碟中的壞軌導致。

硬碟損毀

Q1. RAID 1模式下，如果放入一顆新的硬碟，系統的總容量會是？

A: 1. iR2622的總容量是依據一開始安裝的主硬碟容量而定。
2. 安裝完成後，即使更換一顆較大容量的硬碟，儲存容量也不會增加。

Q2. 為何當我安裝第二顆硬碟時出現錯誤訊息？

A: 1. 第二顆硬碟的容量必須大於第一顆硬碟，否則iR2622不會進行資料重建。

關於資料自動重建功能

Q1. 如果當iR2622在資料重建時關掉電腦電源，會不會怎樣？

A: 在RAID 1模式下，資料重建過程中關閉電源，控制器會自動記憶已完成的百分比，當在度開啟電源後，重建過程會從斷電前的百分比繼續。

Q2. 資料重建過程中是否有可能會遺失資料？

A：資料重建功能是Sector to Sector的拷貝方式。技術上來說，資料並不會在資料重建過程中遺失。但是，如果資料重建過程中，原本的硬碟(Source)被偵測到壞軌，iR2622將會採用模擬方式而不會因此壞軌認為硬碟損毀。因此，這種情況下儲存在壞軌的資料就有可能會遺失。

RAIDON
Your Data Security Guardian
www.raidon.com.tw